



# Stage Equipment Catalogue







# Stage Equipment Catalogue

## STAGE ELEMENTS

STAGE PLATFORMS .....	10-15
STAIRS .....	16-17
HANDRAILS .....	18
ACCESSORIES .....	19-20

## DEFENDER

CABLE PROTECTION SYSTEMS .....	24-37
--------------------------------	-------

## STAGE FABRICS

GAUZE .....	40-43
BACKDROPS & CURTAINS .....	44-46
ACCESSORIES .....	47-48

## POWER DISTRIBUTION

POWER DISTRIBUTION .....	52-61
--------------------------	-------

## SAFETIES

RIGGING ACCESSORIES .....	64-65
SAFETIES .....	66-67
FLYWARE .....	68-69
TRUSS STACKER .....	70

## TAPES

TAPES .....	74-77
-------------	-------

## ACCESSORIES

CABLE & VELCRO .....	80
BATTERIES .....	81
GLUE & PAINT .....	82-83

## 19" EQUIPMENT

MOUNTING PARTS .....	86-87
19" PANELS .....	89-91
CRADLES & HOUSINGS .....	92
19" DRAWERS .....	93-94
MISCELLANEOUS .....	95
RACK LIGHTS ....	96-100



# ABOUT THE ADAM HALL GROUP

The Adam Hall Group is a leading German manufacturing and distribution company providing event technology solutions around the globe to a diverse portfolio of business customers, including music instrument retailers and dealers, live event and rental companies, broadcast studios, AV and system integrators, private and public enterprises, and industrial flightcase manufacturers. The company offers a wide range of professional audio and lighting technology as well as stage equipment and flightcase hardware under its brands LD Systems®, Cameo®, Gravity®, Defender®, Palmer® and Adam Hall®.

Founded in 1975, Adam Hall Group has developed into a collection of modern, innovative event technology companies. This includes an 8,000 square metre warehouse and logistics centre at the corporate headquarters near Frankfurt am Main, Germany.

## ADAM HALL GROUP BRANDS



## DISTRIBUTION BRANDS











# STAGE EQUIPMENT FROM ADAM HALL

Adam Hall has been your specialist for professional stage equipment since 1975. Whether for use at open-air events, in theatres, studios, community and general-purpose halls, trade shows or in the gastronomy sector, we supply a comprehensive assortment of useful event equipment for any event and for a broad range of requirements.

Adam Hall Stage Equipment offers a huge selection of stage gauze, 19" equipment and stage systems. Attachment parts such as steps, handrails, side parts and wheelchair ramps offer additional configuration options. Duct tape, foam and stage molton, right up to measuring instruments, DEKRA-approved cable protection systems and BVGC 1 safeties complete the programme.

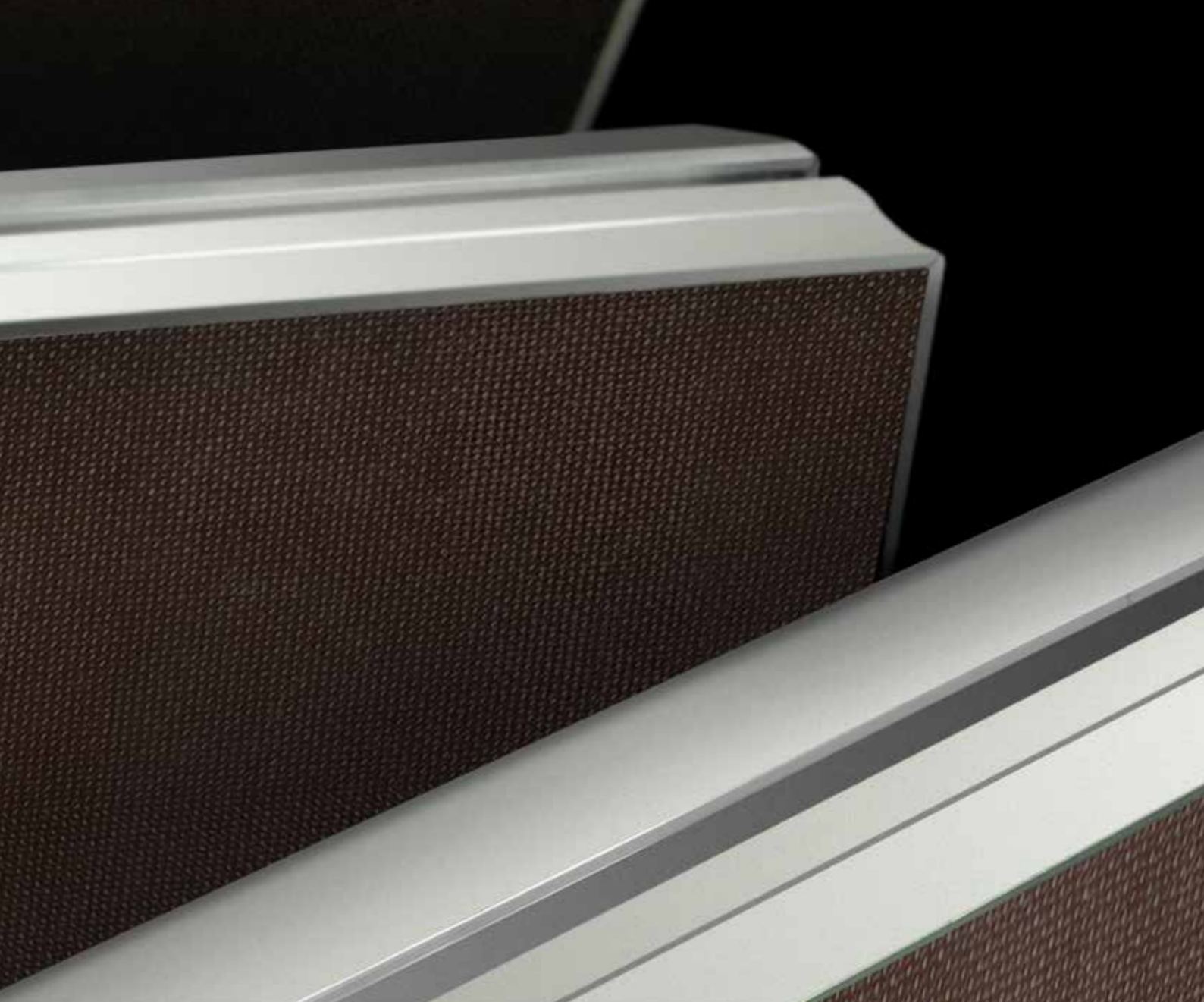
Adam Hall Stage Equipment means that you are perfectly equipped - with high availability from a single source in the reliable Adam Hall quality that naturally conforms to event equipment standards and regulations.

## READY TO ORDER?

Please feel free to give us a call. On the back of this catalogue you will find contact details for the various sales teams around the globe. Your respective sales representative is available Mon. – Fri. and is ready to help you. Further details can be found in the 'Contact' section of our website.

[www.adamhall.com](http://www.adamhall.com)

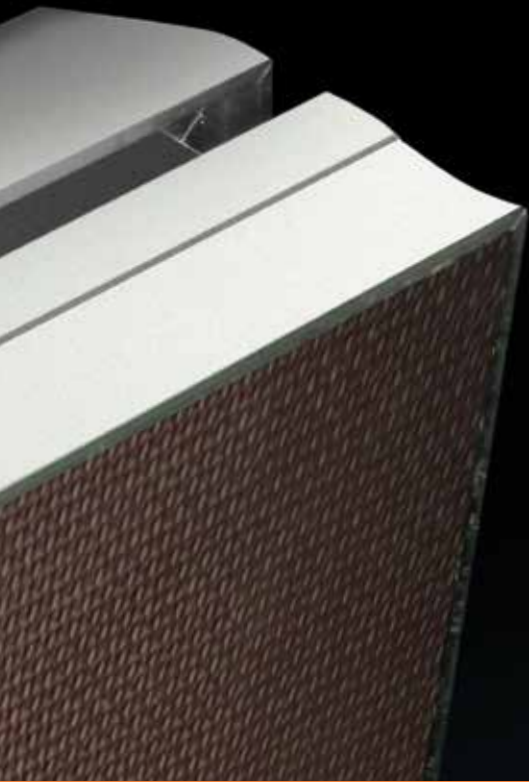




## BÜTEC STAGE PLATFORMS – QUALITY MADE IN GERMANY

Established in 1979, Bütec is a major manufacturer of professional staging equipment today. The Adam Hall Group offers a comprehensive selection of stage platforms, risers, stairs, handrails, guardrails and accessories for indoor and outdoor stage systems. Bütec products are made in Germany to the highest standards and GS certified.





# ECO 1 UNIVERSAL SERIES

The BÜTEC Eco 1 - Universal makes universal access to many other stage systems. The ergonomic - specially designed frame makes it possible! Different staging systems in different locations and events, ask for the user no longer a problem with the BÜTEC Eco 1 - Universal platform, the frame profile fits to almost any foreign - stage effortlessly, with no special brackets are attached.



## B3010101

### STAGE PLATFORM INDOOR 2 X 1 M

- Frame material: aluminum
- Flooring material: Beech wood core plywood
- Thickness of flooring material: 22 mm
- Width: 2 m
- Depth: 1 m
- Stacking height: 10 cm
- Max. load: 750 kg

Shape:



## B3010201

### STAGE PLATFORM OUTDOOR 2 X 1 M

- Frame material: aluminum
- Flooring material: screen print plate
- Thickness of flooring material: 22 mm
- Width: 2 m
- Depth: 1 m
- Stacking height: 10 cm
- Max. load: 750 kg

Shape:



# ECO 1 UNIVERSAL SERIES



## B3010102

### STAGE PLATFORM INDOOR 2 X 0,5 M

- Frame material: aluminum
- Flooring material: Beech wood core plywood
- Thickness of flooring material: 22 mm
- Width: 2 m
- Depth: 0.5 m
- Stacking height: 10 cm
- Max. load: 750 kg

Shape:



## B3010202

### STAGE PLATFORM OUTDOOR 2 X 0,5 M

- Frame material: aluminum
- Flooring material: screen print plate
- Thickness of flooring material: 22 mm
- Width: 2 m
- Depth: 0.5 m
- Stacking height: 10 cm
- Max. load: 750 kg

Shape:



## B3010104

### STAGE PLATFORM INDOOR 1 X 1 M

- Frame material: aluminum
- Flooring material: Beech wood core plywood
- Thickness of flooring material: 22 mm
- Width: 1 m
- Depth: 1 m
- Stacking height: 10 cm
- Max. load: 750 kg

Shape:



## B3010204

### STAGE PLATFORM OUTDOOR 1 X 1 M

- Frame material: aluminum
- Flooring material: screen print plate
- Thickness of flooring material: 22 mm
- Width: 1 m
- Depth: 1 m
- Stacking height: 10 cm
- Max. load: 750 kg

Shape:





# ECO 1 UNIVERSAL SERIES



**B3010110**  
**STAGE PLATFORM INDOOR**  
**1 X 0.5 M**

- Frame material: aluminum
- Flooring material: Beech wood core plywood
- Thickness of flooring material: 22 mm
- Width: 1 m
- Depth: 0.5 m
- Stacking height: 10 cm
- Max. load: 750 kg

Shape:



**B3010210**  
**STAGE PLATFORM OUTDOOR**  
**1 X 0.5 M**

- Frame material: aluminum
- Flooring material: screen print plate
- Thickness of flooring material: 22 mm
- Width: 1 m
- Depth: 0.5 m
- Stacking height: 10 cm
- Max. load: 750 kg

Shape:



**B3010123**  
**STAGE PLATFORM INDOOR**  
**1 X 2 X 2.24 M**

- Frame material: aluminum
- Flooring material: Beech wood core plywood
- Thickness of flooring material: 22 mm
- Width: 1 m
- Depth: 1 m
- Stacking height: 10 cm
- Max. load: 750 kg

Shape:



**B3010223**  
**STAGE PLATFORM OUTDOOR**  
**1 X 1 M**

- Frame material: aluminum
- Flooring material: screen print plate
- Thickness of flooring material: 22 mm
- Width: 1 m
- Depth: 1 m
- Stacking height: 10 cm
- Max. load: 750 kg

Shape:



**B3010120**  
**STAGE PLATFORM INDOOR**  
**1 X 1 X 1.41 M**

- Frame material: aluminum
- Flooring material: Beech wood core plywood
- Thickness of flooring material: 22 mm
- Dimensions: 1 x 1 x 1.41 m
- Stacking height: 10 cm
- Max. load: 750 kg

Shape:



**B3010220**  
**STAGE PLATFORM INDOOR**  
**1 X 1 X 1.41 M**

- Frame material: aluminum
- Flooring material: screen print plate
- Thickness of flooring material: 22 mm
- Dimensions: 1 x 1 x 1.41 m
- Stacking height: 10 cm
- Max. load: 750 kg

Shape:



# STANDARD SERIES

The Standard platform with leg attachment corners for plug-in legs or height-adjustable telescopic legs. Suitable for leg profiles of 43-55 mm. No additional tools required - by simple hand-tightening of the knob the leg profiles are attached stably and securely. The Platforms can be connected either by high-quality plastic hooks, leg connectors or coupling brackets. All accessories such as connecting brackets, foot to foot clamps or steps can be combined with other Büttec Systems such as the ECO 1 and Standard. The legs for the stage platform are not included.



## **B3000101**

### **STAGE PLATFORM INDOOR 2 X 1 M**

- Frame material: aluminum
- Flooring material: Beech wood core plywood
- Thickness of flooring material: 22 mm
- Width: 2 m
- Depth: 1 m
- Stacking height: 10 cm
- Max. load: 750 kg

Shape:



## **B3000201**

### **STAGE PLATFORM OUTDOOR 2 X 1 M**

- Frame material: aluminum
- Flooring material: screen print plate
- Thickness of flooring material: 22 mm
- Width: 2 m
- Depth: 1 m
- Stacking height: 10 cm
- Max. load: 750 kg

Shape:



# STANDARD SERIES



## B3000102

### STAGE PLATFORM INDOOR 2 X 0,5 M

- Frame material: aluminum
- Flooring material: Beech wood core plywood
- Thickness of flooring material: 22 mm
- Width: 2 m
- Depth: 0.5 m
- Stacking height: 10 cm
- Max. load: 750 kg

Shape:



## B3000202

### STAGE PLATFORM OUTDOOR 2 X 0,5 M

- Frame material: aluminum
- Flooring material: screen print plate
- Thickness of flooring material: 22 mm
- Width: 2 m
- Depth: 0.5 m
- Stacking height: 10 cm
- Max. load: 750 kg

Shape:



## B3000104

### STAGE PLATFORM INDOOR 1 X 1 M

- Frame material: aluminum
- Flooring material: Beech wood core plywood
- Thickness of flooring material: 22 mm
- Width: 1 m
- Depth: 1 m
- Stacking height: 10 cm
- Max. load: 750 kg

Shape:



## B3000204

### STAGE PLATFORM OUTDOOR 1 X 1 M

- Frame material: aluminum
- Flooring material: screen print plate
- Thickness of flooring material: 22 mm
- Width: 1 m
- Depth: 1 m
- Stacking height: 10 cm
- Max. load: 750 kg

Shape:



# STANDARD SERIES



**B3000110**  
**STAGE PLATFORM INDOOR**  
**1 X 0.5 M**

- Frame material: aluminum
- Flooring material: Beech wood core plywood
- Thickness of flooring material: 22 mm
- Width: 1 m
- Depth: 0.5 m
- Stacking height: 10 cm
- Max. load: 750 kg

Shape:



**B3000210**  
**STAGE PLATFORM OUTDOOR**  
**1 X 0.5 M**

- Frame material: aluminum
- Flooring material: screen print plate
- Thickness of flooring material: 22 mm
- Width: 1 m
- Depth: 0.5 m
- Stacking height: 10 cm
- Max. load: 750 kg

Shape:



**B3000123**  
**STAGE PLATFORM INDOOR**  
**1 X 2 X 2.24 M**

- Frame material: aluminum
- Flooring material: Beech wood core plywood
- Thickness of flooring material: 22 mm
- Width: 1 m
- Depth: 1 m
- Stacking height: 10 cm
- Max. load: 750 kg

Shape:



**B3000223**  
**STAGE PLATFORM OUTDOOR**  
**1 X 2 X 2.24 M**

- Frame material: aluminum
- Flooring material: screen print plate
- Thickness of flooring material: 22 mm
- Width: 1 m
- Depth: 1 m
- Stacking height: 10 cm
- Max. load: 750 kg

Shape:



**B3000120**  
**STAGE PLATFORM INDOOR**  
**1 X 1 X 1.41 M**

- Frame material: aluminum
- Flooring material: Beech wood core plywood
- Thickness of flooring material: 22 mm
- Dimensions: 1 x 1 x 1.41 m
- Stacking height: 10 cm
- Max. load: 750 kg

Shape:



**B3000220**  
**STAGE PLATFORM INDOOR**  
**1 X 1 X 1.41 M**

- Frame material: aluminum
- Flooring material: screen print plate
- Thickness of flooring material: 22 mm
- Dimensions: 1 x 1 x 1.41 m
- Stacking height: 10 cm
- Max. load: 750 kg

Shape:



# STAIRS



B500111003020



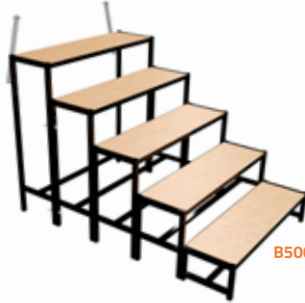
B500211003020



B500311003020



B500411003020



B500511003020



B500611003020



B500711003020



B500121003020



B500221003020



B500321003020



B500421003020



B500521003020



B500621003020



B500721003020

## B500###

### STAIR STEEL

Modularly expandable, sectional steel stage stairs with Beech wood core plywood surface or screen-printed panels according to customer preference. Expandable for a maximum stage height of 1.60 m. Very simple assembly of the steps thanks to plug connections; the handrails are mounted securely and firmly with screws. The stair adapter set makes it possible to connect the stairs, so that they end flush with the stage.

- Material: steel
- Surface: powder coated
- Material thickness of step: 22 mm
- Step size: 1000 x 300 mm
- Step height: 200 mm
- For Stage Platform height up to: 40 m
- Width: 1 m
- Length: 0.3 m

Art. No.	Number of steps	Height up to
B500111003020	1	40 cm
B500211003020	2	60 cm
B500311003020	3	80 cm
B500411003020	4	100 cm
B500511003020	5	120 cm
B500611003020	6	140 cm
B500711003020	7	160 cm

## B500###

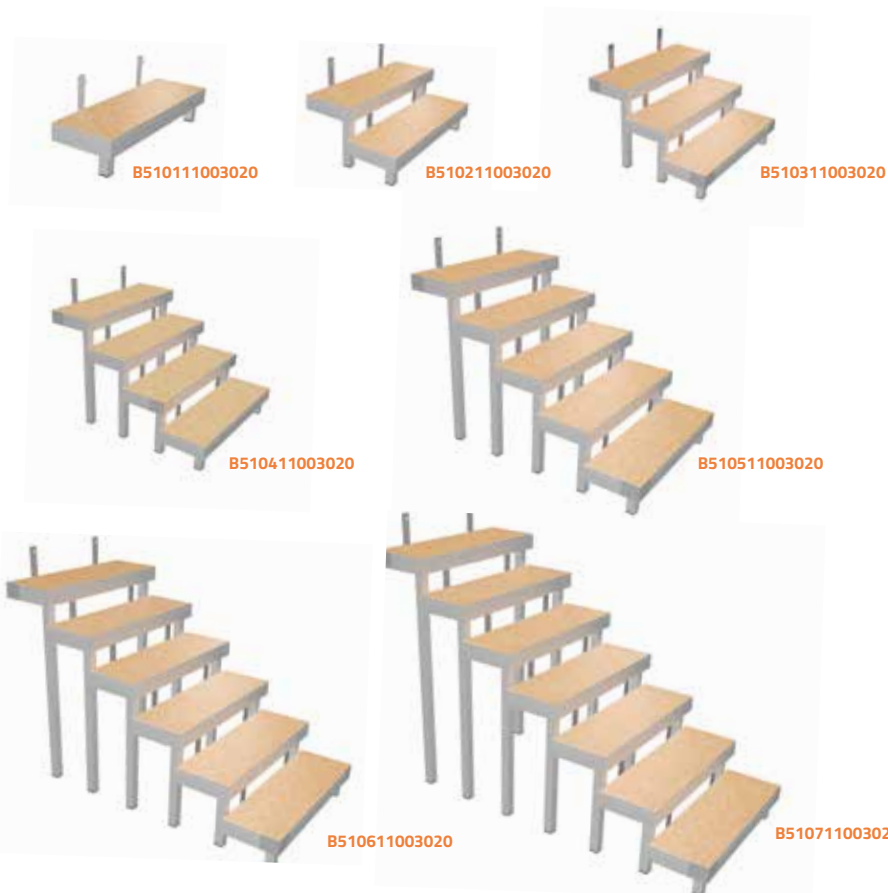
### STAIR STEEL WITH SCREEN PRINTING PANEL

Modular, extendable stair noses made of steel profile with a screen printing plate. Expandable for a stage height of max. 1.60 m. Easiest installation of the stairs by plug connection, the railings are securely and firmly screwed. The stair adapter set makes it possible to connect the stairs, so that they end flush with the stage. Including two stair brackets for fitting to landings/platforms Also available as a version with beech wood chipboard

- Material: steel
- Surface: powder coated
- Material thickness of step: 22 mm
- Step size: 1000 x 300 mm
- Step height: 200 mm
- For Stage Platform height up to: 40 m
- Width: 1 m
- Length: 0.3 m

Art. No.	Number of steps	Height up to
B500121003020	1	40 cm
B500221003020	2	40 cm
B500321003020	3	60 cm
B500421003020	4	80 cm
B500521003020	5	100 cm
B500621003020	6	120 cm
B500721003020	7	140 cm

# STAIRS



## B510###

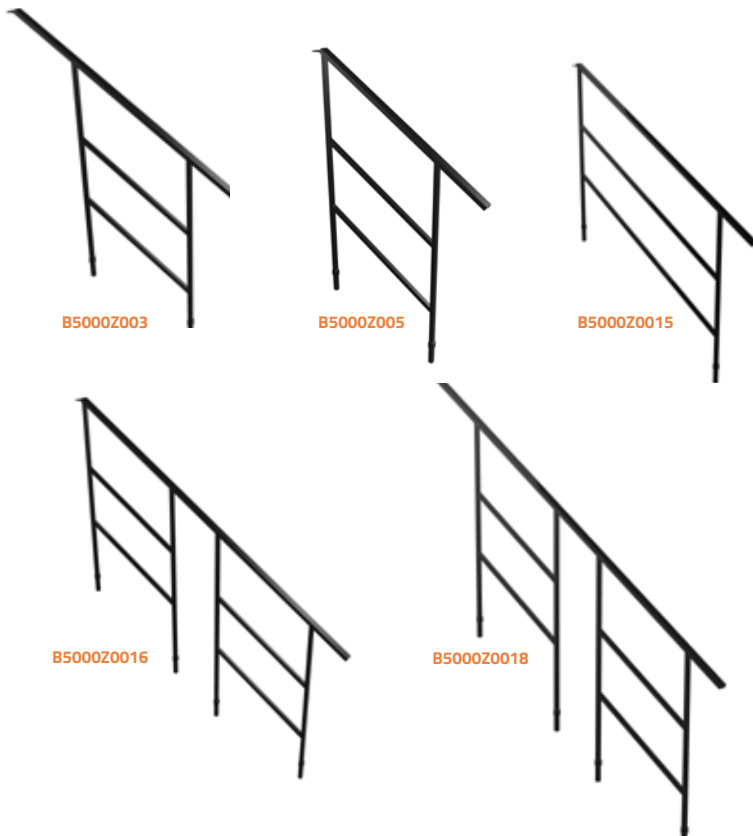
### STAIR ALUMINUM

The platform stairs are made of small platforms with steps made of 22 mm beech-wood-core plywood or screen-printed panels according to customer preference. The stairs can be extended easily at any time. Very simple assembly of the steps by means of hooks in the interior groove.

- Material: aluminum
- Material thickness of step: 22 mm
- Number of steps: 2
- Step size: 1000 x 300 mm
- Step height: 200 mm
- For Stage Platform height up to: 0.6 m
- Width: 1 m
- Length: 0.3 m

Art. No.	Number of steps	Height up to
B510111003020	1	40 cm
B510211003020	2	60 cm
B510311003020	3	80 cm
B510411003020	4	100 cm
B510511003020	5	120 cm
B510611003020	6	140 cm
B510711003020	7	160 cm

# HANDRAILS & GUARDRAILS



## B5000Z0##

### HANDRAIL FOR MODULAR STAIRS

- Material: steel
- Surface: powder coated
- Color: black

Art. No.	Type	For square profile
<b>B5000Z003</b>	for 3-4 stairs	50 x 50 mm
<b>B5000Z005</b>	for 2 stairs	50 x 50 mm
<b>B5000Z0015</b>	for 5 stairs	50 x 50 mm
<b>B5000Z0016</b>	for 6 stairs	50 x 50 mm
<b>B5000Z0018</b>	for 7 stairs	55 x 55 mm



## B5300100100

### GUARDRAIL FOR STAGE PLATFORM 1 X 1 M

- Material: steel
- Surface: powder coated
- Color: black
- Width: 1 m
- Length: 1 m
- Special feature: incl. mounting material



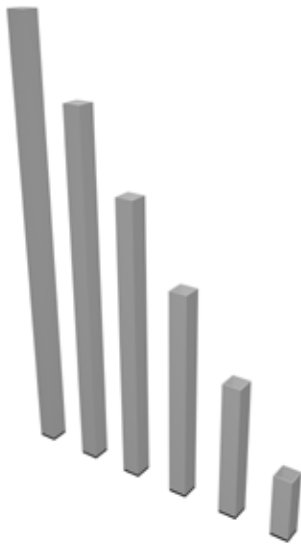
## B5300100200

### GUARDRAIL FOR STAGE PLATFORM 2 X 1 M

- Material: steel
- Surface: powder coated
- Color: black
- Width: 2 m
- Length: 1 m
- Special feature: incl. mounting material



# ACCESSORIES



## B4050### SET OF 4 PLUG-IN LEGS

- Material: aluminum
- Leg cross section: 50 x 50 mm
- Leg length variable: no
- Leg length: 0.4 m
- Set consists of: 4 pcs

Art. No.	Height	Weight
B4050020	0.2 m	0.73 kg
B4050040	0.4 m	1.53 kg
B4050060	0.6 m	2.33 kg
B4050080	0.8 m	3.13 kg
B4050100	1.0 m	4.06 kg
B4050120	1.2 m	7.73 kg
B4050140	1.4 m	5.54 kg
B4050160	1.6 m	6.34 kg



## B4550### SET OF 4 ADJUSTABLE TELESCOPIC LEGS 40 - 180 CM

- Material: aluminum
- Leg cross section: 55 x 55 mm
- Leg length variable: yes
- Set consists of: 4 pcs

Art. No.	Height	Weight
B4550040	0.4-0.6 m	5.34 kg
B4550060	0.6-1.0 m	7.46 kg
B4550080	0.8-1.3 m	8.50 kg
B4550100	1.0-1.6 m	11.72 kg
B4550120	1.2-1.8 m	14.00 kg

B4700006



B4700007



B4700008



B4700009



B4700012



B4700013



B4700014



B4700015



## B4700### LEG CLAMPS

With rugged foot clamps by Bütec your stage platforms will stand absolutely stable even if they are very high. The foot connectors are available for all common systems between 50 x 50 mm and 60 x 60 mm and are fixed with a central screw.

- Material: die-cast zinc

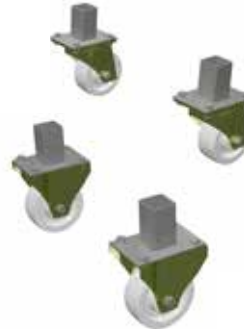
Art. No.	Type	For square profile
B4700006	B 2 legs for frame to legs connection	50 x 50 mm
B4700007	A 2 legs for frame to frame connection	50 x 50 mm
B4700008	D 2 legs for frame to frame connection	55x 55 mm
B4700012	B 2 legs for frame to legs connection	50 x 50 mm
B4700013	A 2 legs for frame to frame connection	50 x 50 mm
B4700009	C 2 legs for frame to frame connection	55 x 55 mm
B4700014	D 4 legs for frame to legs connection	55 x 55 mm
B4700015	C 4 legs for frame to frame connection	55 x 55 mm



## B4700067 TRANSPORT CASTOR SET FOR STAGE PLATFORMS WITH PLUG- IN FEET

Transport castor set for stage platforms with plug-in feet consisting of 4 swivel castors and made of soft plastic for normal floors.

- Wheel diameter: 150 mm
- Height: 192 mm
- Cabinet material: sheet steel
- Wheel material: polyurethane
- Wheel color: blue
- Bearing type: ball bearing
- Rated load per set: 1000 kg
- Set consists of: 4 pcs.



## B4700041 TRANSPORT CASTOR SET FOR STAGE PLATFORMS WITH PLUG- IN FEET

Transport castor set for stage platforms with plug-in feet consisting of 2 swivel castors and 2 fixed castors made of soft plastic for normal floors.

- Wheel diameter: 150 mm
- Height: 192 mm
- Cabinet material: sheet steel
- Wheel material: polyurethane
- Wheel color: blue
- Bearing type: ball bearing
- Rated load per set: 1000 kg
- Set consists of: 4 pcs

# ACCESSORIES



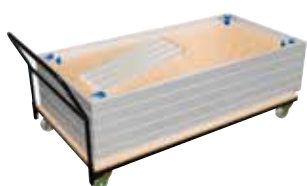
## B4700-001 PLASTIC CONNECTING CLAMP FOR STAGE PLATFORMS

Your platforms can be connected with one another using the time tested plastic or die cast zinc connecting clamps.



## B4700-002 DIE-CAST ZINC CONNECTING CLAMP FOR STAGE PLATFORMS

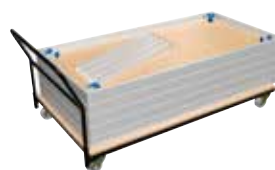
Your platforms can be connected with one another using the time tested plastic or die cast zinc connecting clamps.



## B5400 DOLLY FOR STAGE PLATFORMS FOR NORMAL FLOORS 2 X 1 M

- Push bar: yes
- Number of swivel castor: 2
- Number of castor: 2
- For stage platform dimensions: 2 x 1 m

For up to 18 podiums with plug-in feet or 8 podiums with scissor legs.



## B5410 DOLLY FOR STAGE PLATFORMS FOR SENSITIVE FLOORS 2 X 1 M

- Push bar: yes
- Number of swivel castor: 2
- Number of castor: 2
- For stage platform dimensions: 2 x 1 m

For up to 18 podiums with plug-in feet or 8 podiums with scissor legs.



## B5437 DOLLY FOR STAGE PLATFORMS FOR VERTICAL STORAGE OF 6 PLATES

- Push bar: yes
- Number of swivel castor: 2
- Number of castor: 2
- For stage platform dimensions: 2 x 1 m



## B5450 TRANSPORT AND STORAGE SYSTEM ROLL RACK, 4-PART INCL. 2 TENSIONING STRAPS

- Push bar: no
- Number of swivel castor: 4
- Number of castor: 0

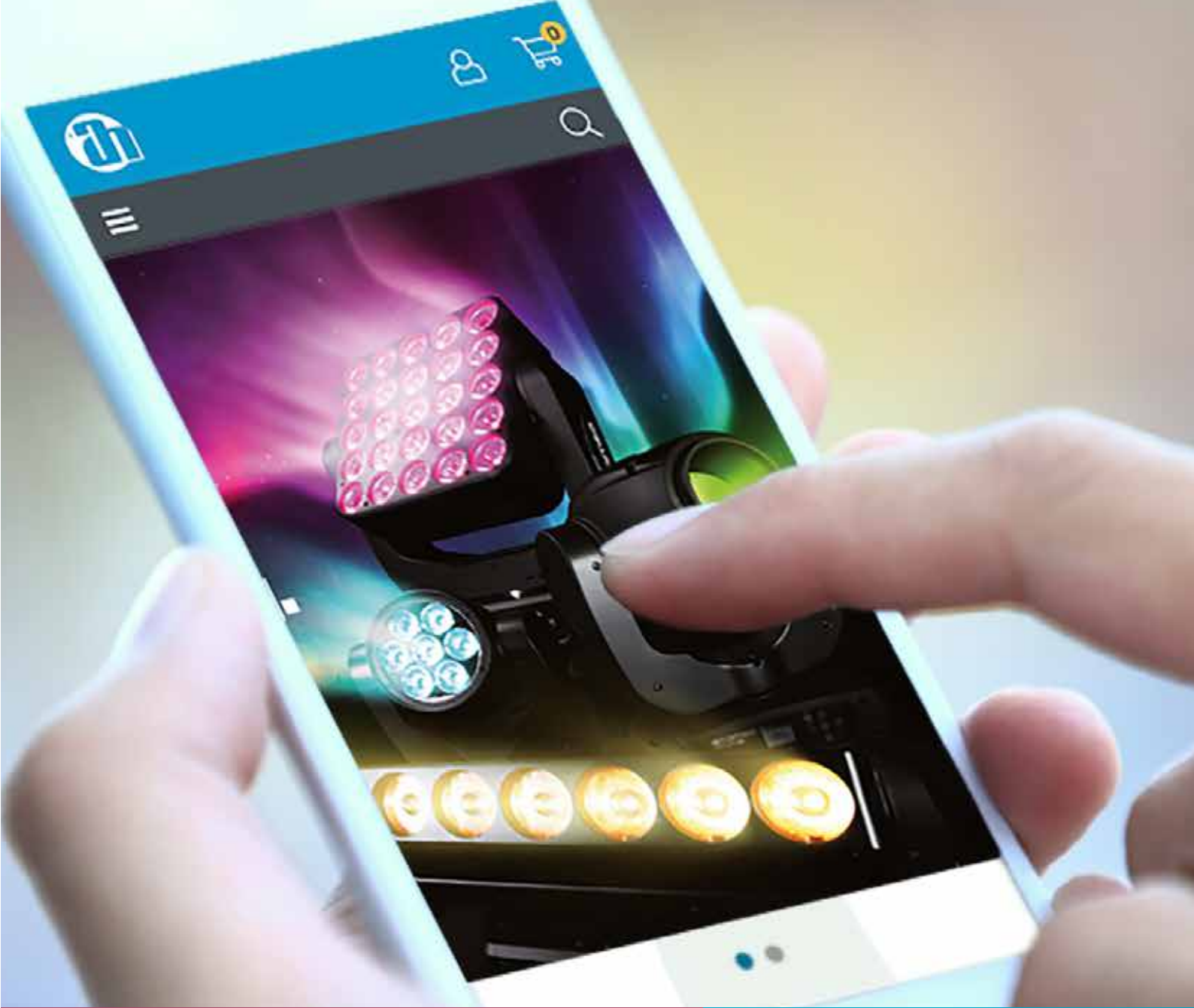


## 0153X## BLACKOUT CLOTH B1 WITH VELCRO

Non-see-thru, black blackout cloth impregnated with fire retardant (B1 according to DIN 4102) and 300-g quality. The fabrics have a self-adhesive hook-and-loop strip, making it easy to attach them to platforms or the like and detach them again at any time.








- Sewn-on fleece strip with attached hook strip
- Left and right selvedge
- 5 cm hemstitch with open sides at the bottom

Art. No.	Size
0153X204	2.0 x 0.4 m black
0153X206	2.0 x 0.6 m black
0153X208	2.0 x 0.8 m black
0153X210	2.0 x 1.0 m black
0153X211	2.0 x 1.1 m black



## Our B2B shop

Intuitively designed for you

-  Fast and secure shopping
-  High availability from one source
-  Reliable Adam Hall quality
-  Your trade prices available at all times
-  Exclusive deals and closeouts
-  Inventory levels in real time
-  New products at a glance

[www.shop.adamhall.com](http://www.shop.adamhall.com)

 **adam hall**<sup>®</sup>  
experience event technology





## DEFENDER® CABLE PROTECTION SYSTEMS – THE INDUSTRY & EVENT STANDARD

Originally developed to guard electrical cables and prevent tripping hazards at rock concerts Defender® cable protectors have become the standard in a wide variety of industrial, commercial and public applications.

Designed and made in Germany from ultra-rugged, recyclable TPU (Thermoplastic Polyurethane) the Defender® range comprises various modular protection systems for cables and hoses with diameters up to 113 mm. Stringent raw material and production controls ensure that Defender® protectors meet exacting specifications and the highest quality standards. Defender® cable ramps are DEKRA certified in conformity with DIN 31000 and EN 61537, B2 fire rated according to DIN 4102 (B1 also available) and compliant with the Low Voltage Directive.





# DEFENDER<sup>®</sup> LUX

## SEMI-TRANSPARENT LID SERIES

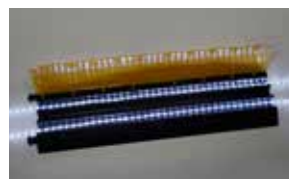
The ultimate in cable protection and trip hazard prevention, our innovative Defender LUX Series feature highly translucent yellow-tinted lids for running LED rope lights along your cables and cords. Developed in conjunction with major venues and event organizers Defender LUX Cable Protectors are the state-of-the-art indoor and outdoor solution to ensure maximum visibility and security in the dark. For use with standard LED rope lights.

**Description:**

Defender Ultra L Lux  
 Defender Ultra L II Lux  
 Defender XXL Lux  
 Defender III Lux  
 Defender Midi Lux  
 Defender Midi 4C Lux  
 Defender Mini Lux  
 Defender Nano Lux

**Art. No.:**

85600LUX  
 85601LUX  
 85500LUX  
 85002L UX  
 85300LUX  
 85301LUX  
 85200LUX  
 85150LUX







# DEFENDER<sup>®</sup> CUSTOM SERVICE

DESIGN YOUR CABLE PROTECTION SYSTEM!

## SPECIAL CONFIGURATIONS



### ROBOTIC PLASTIC WELDING

For superior flexibility in designing your cable protection system and perfect integration into your environment Defender provides its own in-house robotic plastic welding service. Need an intersection or T-junction, a special angle or radius curve?



We produce one-offs and small quantities of Defender elements made to your requirements. What's more, at Defender engineering and tooling we develop and produce special purpose injection-molded protection solutions like those below. Talk to your Defender representative for more information and minimum orders.



### LABEL YOUR CABLE PROTECTORS

Self branding of your cable protectors has 3 main advantages : Advertisement for your brand / Corporate Identity conformity / Avoid mixing up your equipment with another company on large events. Self branding of the DEFENDER cable protectors with the Logo of your company can be purchased for orders ex 30 pieces. You will find the logo format requirements on our website. Feel free to contact our sales team for more information at [sales@adamhall.com](mailto:sales@adamhall.com)

## CUSTOM SOLUTION DEVELOPMENT



### DEFENDER SUBTERRA

Developed with and produced for Halliburton Oilfield Services, the Subterra is a protection system for underground hydraulic lines. It combines thermoplastic polyurethane and reinforced polyamide materials to withstand earth pressure and truly demonstrates the scope of Defender's purpose design and custom production facilities.



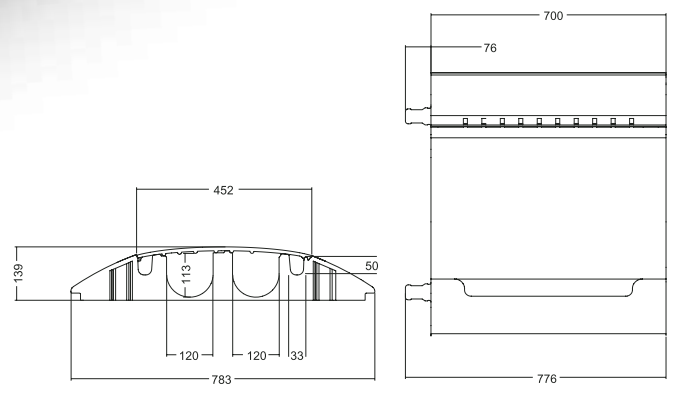
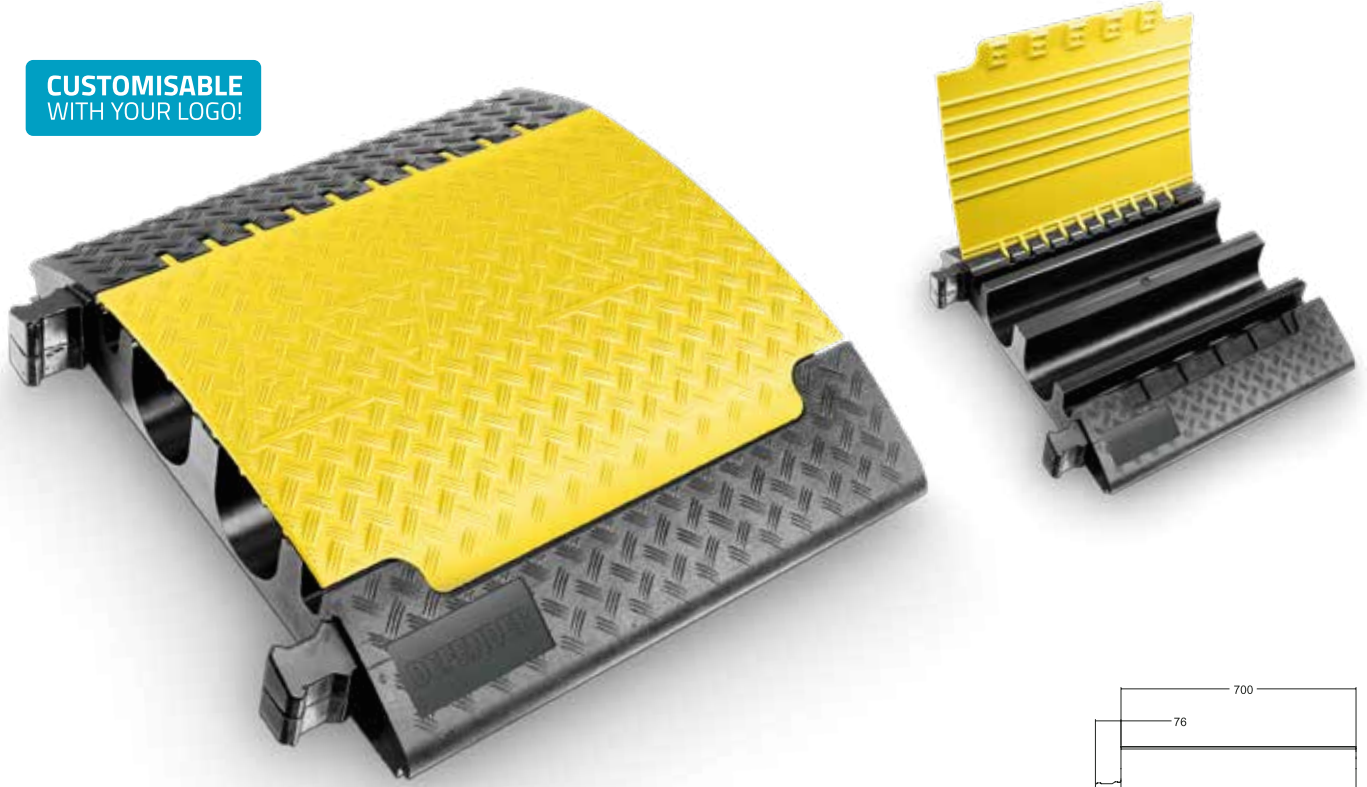
### DEFENDER RACE RESULT

Developed with leading race management and timing company race result, these injection molded thermoplastic polyurethane protectors are another Defender Custom product that has been purpose-designed for the company's sports event timing system antennas.



# CABLE PROTECTION SYSTEMS

**CUSTOMISABLE  
WITH YOUR LOGO!**



## 85600

### DEFENDER ULTRA L 2 ULTRA LARGE CHANNELS – THE HEAVY DUTY GIANT

The Ultra L cable protection system is designed for extra heavy duty environments and the largest cable and hose diameters. Featuring a pair of 120 x 113 mm channels flanked by two 33 x 50 mm ducts, integrated dog bone connectors for easy linking and a 5 t per 20 x 20 cm load capacity Defender® Ultra L protectors are eminently suitable for heavy wheeled traffic, construction sites, warehouses, carnivals, fairs, music events and other demanding applications.

#### APPLICATION RANGE

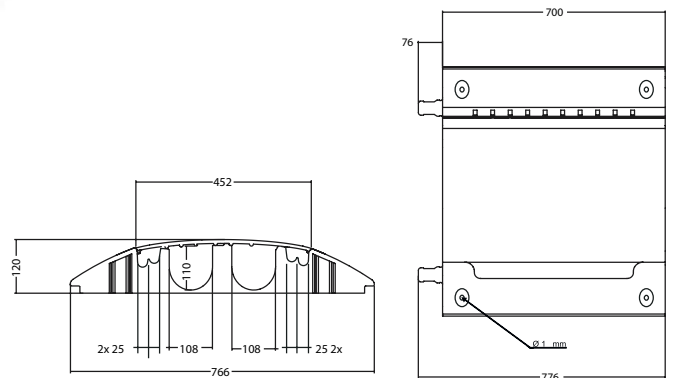
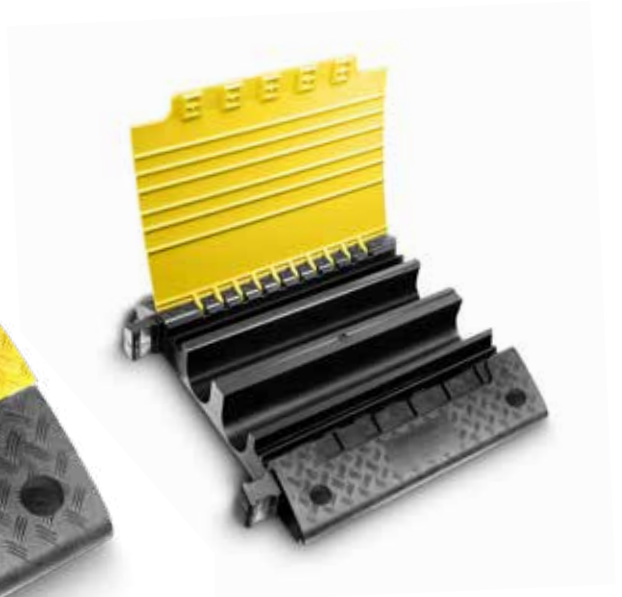
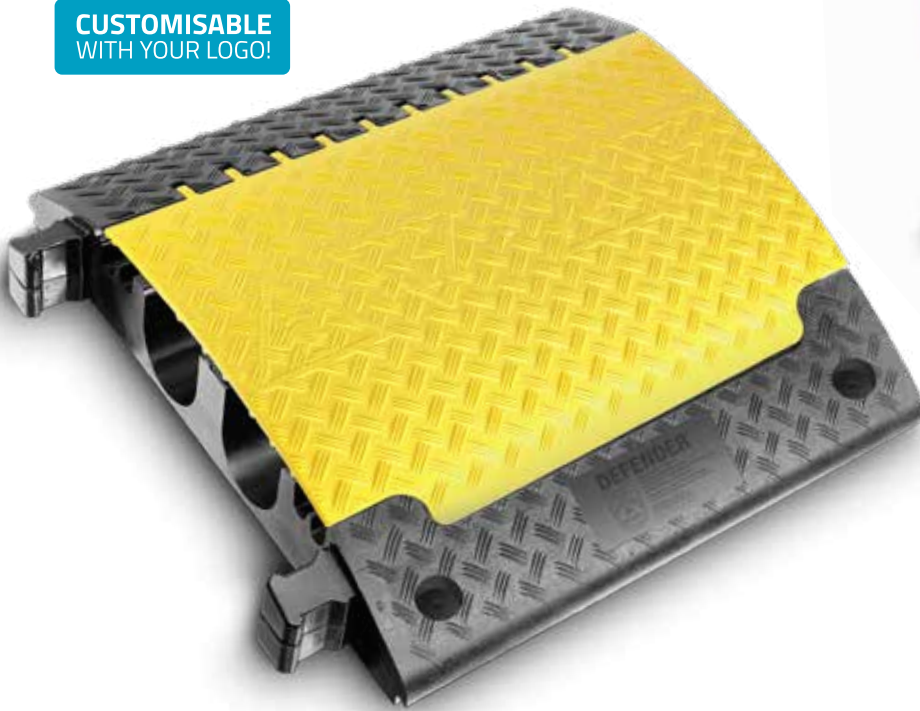
Trade fairs / walkways / marketplaces / Christmas markets / workshops / warehouses / shopping centres / department stores / construction sites, streets, etc. However, please ensure compliance with road traffic regulations (higher than 75 mm).

#### SPECIFICATIONS

Product:	4-channel cable protector
Channel W x H:	33 x 50 mm (channels 1 and 4), 120 x 113 mm (channels 2 and 3)
Material:	TPU (Thermoplastic Polyurethane)
Shore A hardness:	88 ± 4
Load capacity:	approx. 5 t / 20 x 20 cm (typical tyre footprint area)
Fire rating:	B2 (B1 also available)
Resistant to:	most acids, oils, gasoline
Operating temperature:	-30° to +60° C
Length:	700 mm
Width:	783 mm
Height:	139 mm
Weight:	30.5 kg

# CABLE PROTECTION SYSTEMS

**CUSTOMISABLE  
WITH YOUR LOGO!**



## 85601

### DEFENDER ULTRA L 2 2 ULTRA LARGE CHANNELS (2+4) – THE HEAVY DUTY GIANT

Ultra L 2 - heavy duty cable crossovers are designed for the most demanding applications and feature two extra large cable channels of 108 x 110 mm plus four channels with 25 mm diameter and integrated connector plugs for easy coupling of several elements. The load bearing capacity is approx. 5 tons on a 20 x 20 cm surface area. Therefore, Ultra L 2 cable crossovers are the ideal solution for heavy traffic, construction sites, warehouses, trade shows, carnivals and music events, and other applications involving particularly heavy use. They are equipped with 4 fixation holes (Ø 15 mm) for street installation.

#### APPLICATION RANGE

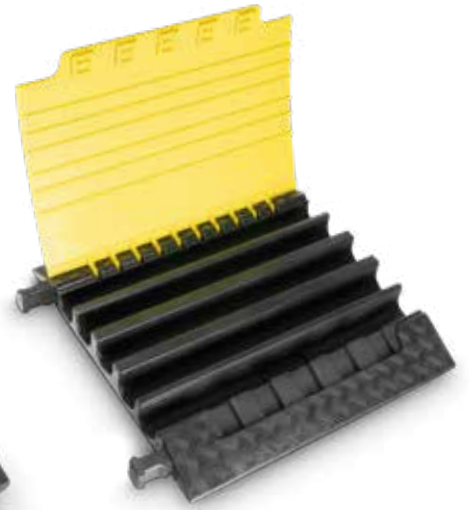
Trade fairs / walkways / marketplaces / Christmas markets / workshops / warehouses / shopping centres / department stores / construction sites, streets, etc. However, please ensure compliance with road traffic regulations (higher than 75 mm).

#### SPECIFICATIONS

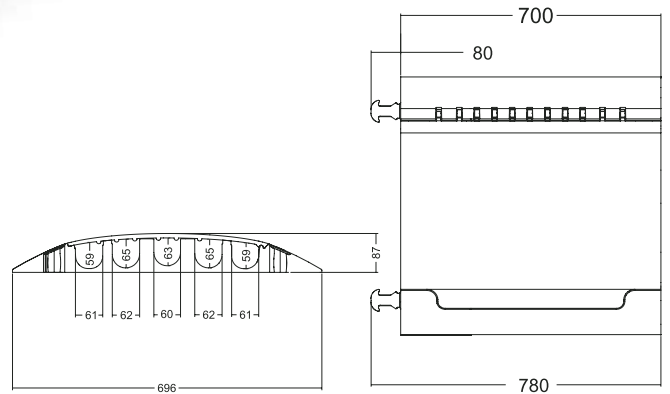
Product:	2+4-channel cable protector
Channel W x H:	Diameter channel 1+2: 25 mm / Diameter channel 5+6: 25 mm Channel 3: 108 x 110 mm / Channel 4: 108 x 110 mm
Material:	TPU (Thermoplastic Polyurethane)
Shore A hardness:	88 ± 4
Load capacity:	approx. 5 t / 20 x 20 cm (typical tyre footprint area)
Fire rating:	B2 (B1 also available)
Resistant to:	most acids, oils, gasoline
Operating temperature:	-30° to +60° C
Length:	700 mm
Width:	766 mm
Height:	120 mm
Weight:	28.3 kg

# CABLE PROTECTION SYSTEMS

**CUSTOMISABLE  
WITH YOUR LOGO!**



End ramp Art. No. **85510**



## 85500

### DEFENDER XXL 5 XXL CHANNELS – THE HEAVY DUTY ALLROUNDER

Developed for extreme work environments the Defender® XXL cable protection system provides 5 channels for large cable and hose diameters including 3 channels suitable for type C fire hoses (only hoses up to Ø62 mm - no coupling) as well as high voltage cables. Integrated dog bone connectors facilitate linking to form a rigid continuous protector, end ramps are available for secure cable entry and exit. With a 5 t per 20 x 20 cm load capacity Defender® XXL protectors are ideal for heavy wheeled traffic, construction sites, warehouses, carnivals, fairs and music events. Built-in handles for easy portability.

#### APPLICATION RANGE

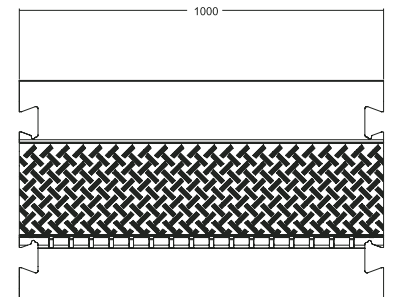
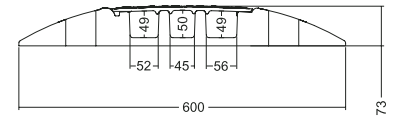
Trade fairs / walkways / marketplaces / Christmas markets / workshops / warehouses / shopping centres / department stores / construction sites, streets, etc. However, please ensure compliance with road traffic regulations (higher than 75 mm).

#### SPECIFICATIONS

Product:	5-channel cable protector
Channel W x H:	61 x 59 mm (channels 1 and 5), 62 x 65 mm (channels 2 and 4), 60 x 63 mm (channel 3)
Material:	TPU (Thermoplastic Polyurethane)
Shore A hardness:	88 ± 4
Load capacity:	approx. 5 t / 20 x 20 cm (typical tyre footprint area)
Fire rating:	B2 (B1 also available)
Resistant to:	most acids, oils, gasoline
Operating temperature:	-30° to +60° C
Length:	700 mm
Width:	696 mm
Height:	87 mm
Weight:	21.4 kg

# CABLE PROTECTION SYSTEMS

**CUSTOMISABLE  
WITH YOUR LOGO!**



**45° curve** Art. No. **85009**



**Connector plugs**  
Art. No. **85004**



**End ramp** Art. No. **85008**



## 85002

### DEFENDER III 3 BIG CHANNELS – MOST POPULAR

Featuring a 73 mm profile, 45° curve and end ramps with detachable dovetail connectors the Defender® III cable protection system provides versatile cable routing and safe crossing for vehicles and pedestrians. With 3 medium large channels, built-in handles for easy portability and a 5 t per 20 x 20 cm load capacity the 73 mm profile Defender® III cable protectors are the perfect all-round choice for a wide variety of applications including heavy wheeled traffic, construction sites, warehouses, carnivals, fairs, trade shows, exhibitions, shopping malls and music events.

#### APPLICATION RANGE

Trade fairs / walkways / marketplaces / Christmas markets / workshops / warehouses / shopping centres / department stores / construction sites, streets, etc..

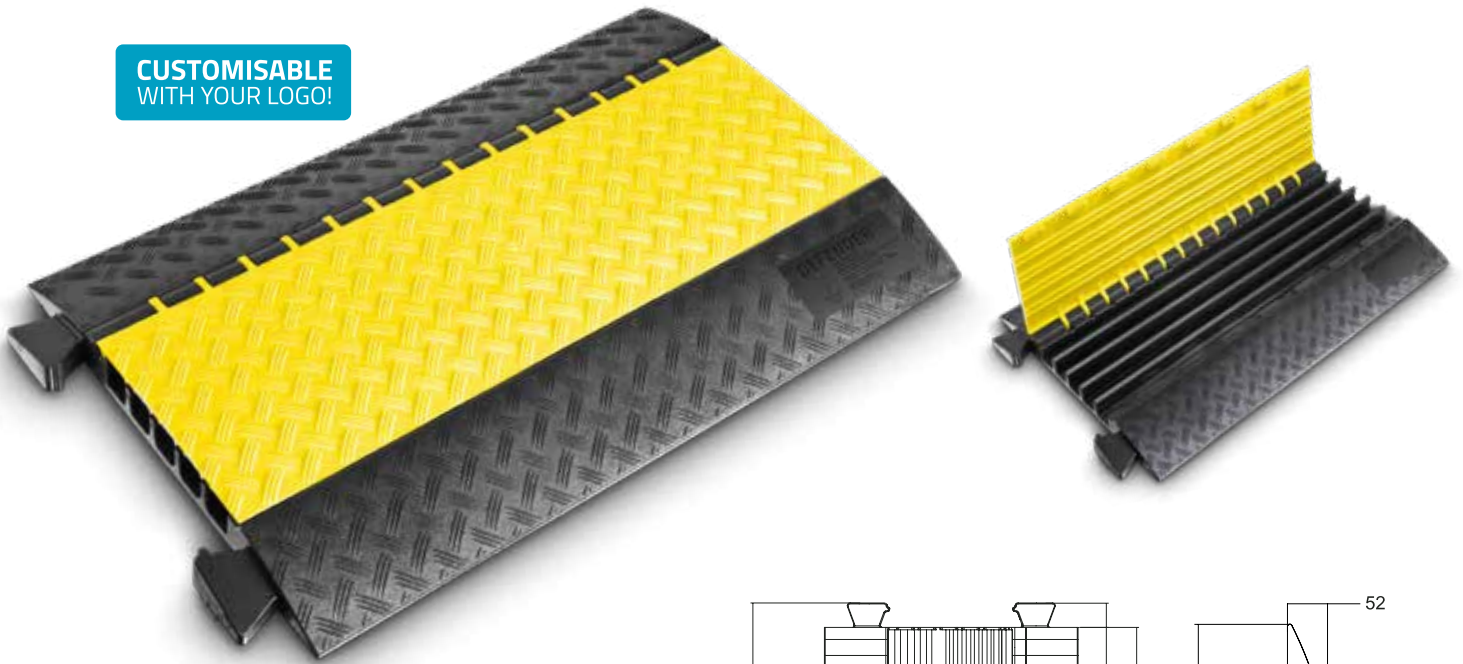
#### SPECIFICATIONS

Product:	3-channel cable protector
Channel W x H:	52 x 49 mm (channel 1 and 3), 45 x 50 mm (channel 2)
Material:	TPU (Thermoplastic Polyurethane)
Shore A hardness:	88 ± 4
Load capacity:	5 t / 20 x 20 cm (typical tyre footprint area)
Fire rating:	B2 (B1 also available)
Resistant to:	most acids, oils, gasoline
Operating temperature:	-30° to +60° C
Length:	1.000 mm
Width:	600 mm
Height:	73 mm
Weight:	22 kg



# CABLE PROTECTION SYSTEMS

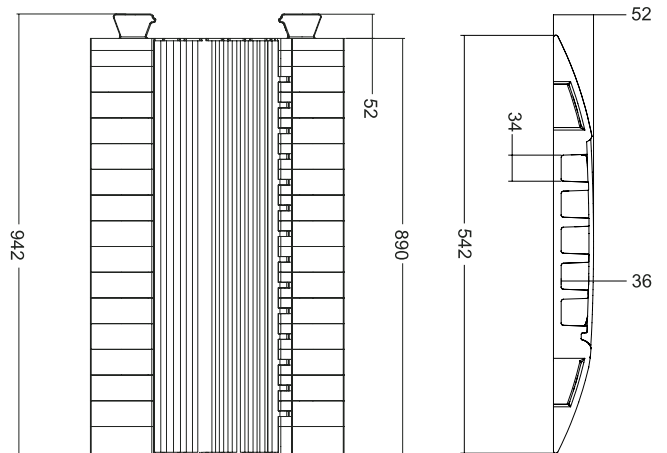
**CUSTOMISABLE  
WITH YOUR LOGO!**



45° curve Art. No. **85310**



End ramp Art. No. **85308**



## 85300

### DEFENDER MIDI 5 MEDIUM CHANNELS – THE SOLUTION FOR NEARLY ANYTHING

The Defender® MIDI cable protection system has been designed for maximum routing versatility and secure crossing. Featuring a low profile, 5 t per 20 x 20 cm load capacity, integrated connectors and handles the straight ramp, 45° curve and end ramps are easily linked to form a continuous cable guard while five 34 x 36 mm channels allow for individual sound, lighting and power line arrangement. Defender® MIDI cable protectors are ideal for a multitude of usages such as heavy wheeled traffic, construction sites, warehouses, carnivals, fairs, trade shows, exhibitions, shopping malls, broadcasting and music events. Available system option: wheelchair ramp.

#### APPLICATION RANGE

Trade fairs / walkways / marketplaces / Christmas markets / workshops / warehouses / shopping centres / department stores / construction sites, streets, etc.

#### SPECIFICATIONS

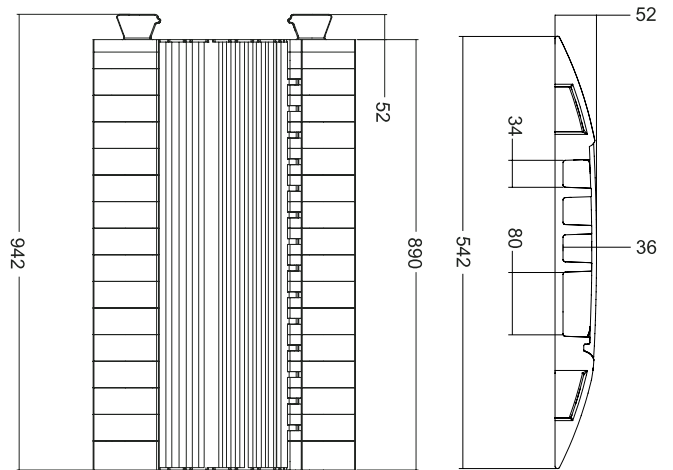
Product:	5-channel cable protector
Channel W x H:	34 x 36 mm (channels 1 to 5)
Material:	TPU (Thermoplastic Polyurethane)
Shore A hardness:	88 ± 4
Load capacity:	approx. 5 t / 20 x 20 cm (typical tyre footprint area)
Fire rating:	B2 (B1 also available)
Resistant to:	most acids, oils, gasoline
Operating temperature:	-30° to +60° C
Length:	890 mm
Width:	542 mm
Height:	52 mm
Weight:	11.5 kg

# CABLE PROTECTION SYSTEMS

**CUSTOMISABLE  
WITH YOUR LOGO!**



End ramp Art. No. **85308**



## 85301

### DEFENDER MIDI 4C 4 MEDIUM CHANNELS – 1 BIG CHANNEL FOR FIRE HOSE

With one wide 80 x 36 mm channel and three 34 x 36 mm ducts the Defender® MIDI 4C cable protection system is the perfect choice when a layflat hose must be run next to separate sound, lighting and power lines. Featuring integrated connectors, the low profile and 5 t per 20 x 20 cm load capacity of the Defender® MIDI system MIDI 4C protectors are suitable for heavy wheeled traffic, construction sites, warehouses, carnivals, fairs, trade shows, exhibitions, shopping malls and music events.

#### APPLICATION RANGE

Trade fairs / walkways / marketplaces / Christmas markets / workshops / warehouses / shopping centres / department stores / construction sites, streets, etc.

#### SPECIFICATIONS

Product:	4-channel cable protector
Channel W x H:	34 x 36 mm (channels 1 to 3), 80 x 36 mm (channel 4)
Material:	TPU (Thermoplastic Polyurethane)
Shore A hardness:	88 ± 4
Load capacity:	Approx 5 tons per typical tyre imprint (10 x 10 cm)
Fire rating:	B2 (B1 also available)
Resistant to:	most acids, oils, gasoline
Length:	890 mm
Width:	542 mm
Height:	52 mm
Weight:	11.5 kg

# CABLE PROTECTION SYSTEMS

**CUSTOMISABLE  
WITH YOUR LOGO!**



End ramp Art. No. **85208F**



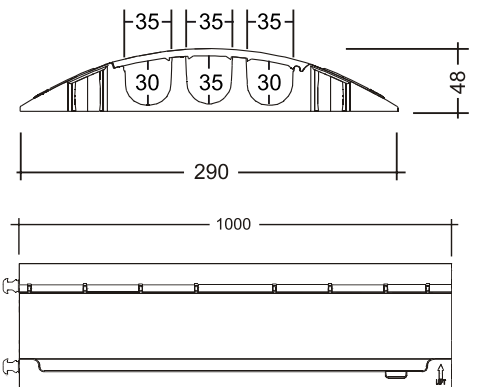
End ramp Art. No. **85208M**



45° curv left Art. No. **85210L**



45° curv right Art. No. **85210R**



## 85200

### DEFENDER MINI 3 SMALL CHANNELS – THE LIGHTWEIGHT CHAMPION

Available with a choice of black or yellow lids the Defender® MINI cable protection system is ideal for both indoor and outdoor use. The compact, low profile 3-channel ramp with integrated dog bone connectors features a slip-resistant underside for superior grip on a wide variety of surfaces. Male and female end ramps are available to provide secure and tidy cable entry and exit. With a 2 t per 20 x 20 cm load capacity Defender® MINI protectors support lightweight vehicles, carts and pedestrian traffic. Applications include carnivals, fairs, trade shows, exhibitions, shopping malls, warehouses, stages, studios and broadcasting. Not suitable for road traffic.

#### APPLICATION RANGE

Trade fairs / walkways / marketplaces / Christmas markets / workshops / warehouses / shopping centres / department stores / construction sites, streets, etc.

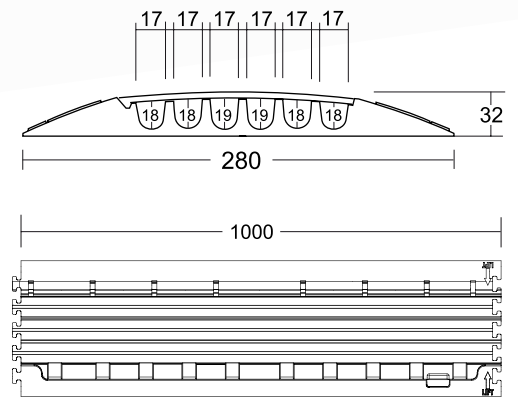
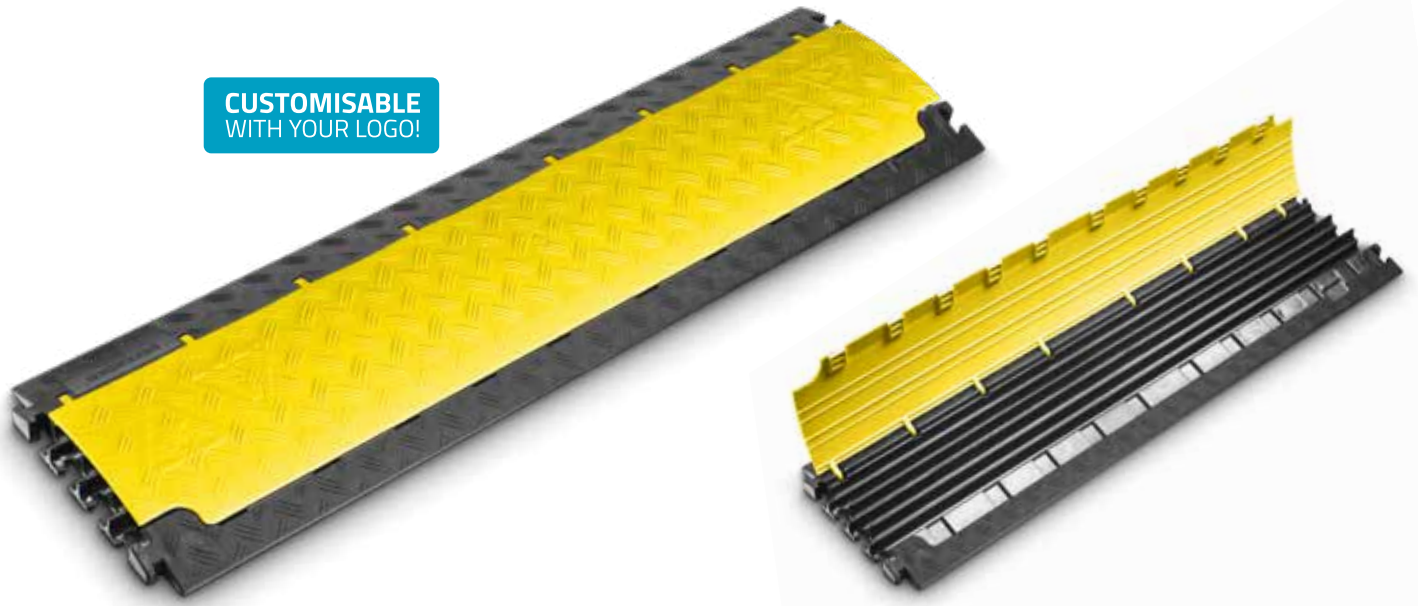
#### SPECIFICATIONS

Product:	3-channel cable protector
Channel W x H:	35 x 30 mm (channels 1 and 3), 35 x 35 mm (channel 2)
Material:	TPU (Thermoplastic Polyurethane)
Shore A hardness:	88 ± 4
Load capacity:	approx. 2 t / 20 x 20 cm (typical tyre footprint area)
Fire rating:	B2 (B1 also available)
Resistant to:	most acids, oils, gasoline
Operating temperature:	-30° to +60° C
Length:	1.000 mm
Width:	290 mm
Height:	48 mm
Weight:	5 kg



# CABLE PROTECTION SYSTEMS

**CUSTOMISABLE  
WITH YOUR LOGO!**



End ramp Art. No. **85158F**

End ramp Art. No. **85158M**



## 85150

### DEFENDER NANO 6 SLIM CHANNELS - DISCRETE OUTDOOR / INDOOR PROTECTION

Providing convenient wheelchair access the Defender® NANO cable protection system is the ultra low profile solution for a wide range of indoor and outdoor applications. Available with black or yellow lid Defender® NANO protectors feature 6 channels for clean and tidy cable arrangement, T-shaped connectors and a 2 t per 20 x 20 cm load capacity to support lightweight vehicles, carts and pedestrian traffic but also forklifts and pallet trucks thanks to their low height design. Male and female end ramps are available to provide secure cable entry and exit.

The Defender® NANO protection system is ideal for carnivals, fairs, trade shows, exhibitions, shopping malls, warehouses, stages, studios and broadcasting. Not suitable for road traffic.

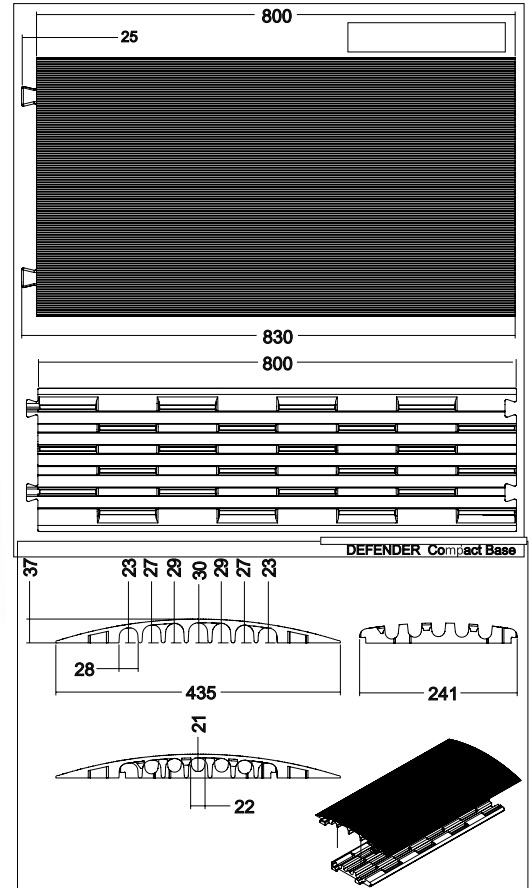
#### APPLICATION RANGE

Trade fairs / walkways / marketplaces / Christmas markets / workshops / warehouses / shopping centres / department stores / construction sites, streets, etc.

#### SPECIFICATIONS

Product:	6-channel cable protector
Channel W x H:	17 x 18 mm (channels 1 to 6)
Material:	TPU (Thermoplastic Polyurethane)
Shore A hardness:	88 ± 4
Load capacity:	approx. 2 t / 20 x 20 cm (typical tyre footprint area)
Fire rating:	B2 (B1 also available)
Resistant to:	most acids, oils, gasoline
Operating temperature:	-30° to +60° C
Length:	1.000 mm
Width:	280 mm
Height:	32 mm
Weight:	4.37 kg

# CABLE PROTECTION SYSTEMS



## 85100

### DEFENDER COMPACT 7 SMALL CHANNELS - THE DROP OVER SOLUTION

The Defender® COMPACT drop-over cable protector is a durable light-duty solution to guard cable lines and prevent tripping hazards. Featuring a ribbed surface for excellent traction and integrated dovetail connectors Defender® COMPACT drop-over cable ramps are suitable for pedestrian traffic in offices, shopping malls, conference facilities, trade shows and markets as well as stage and studio applications.

### DEFENDER® COMPACT WITH BASE (85100 + 85103)

Attached to the optional 5-channel base the Defender® COMPACT drop-over cable protector transforms into a heavy-duty guard with high load capacity to support trucks, forklifts and other vehicles. The ribbed surface provides excellent traction while integrated connectors on the base and drop-over facilitate lining up to form a rigid continuous protection system. The range of applications includes construction sites, carnivals, fairs, trade shows, exhibitions, warehouses, shopping malls and music events.

### APPLICATION RANGE

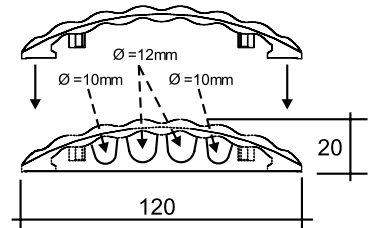
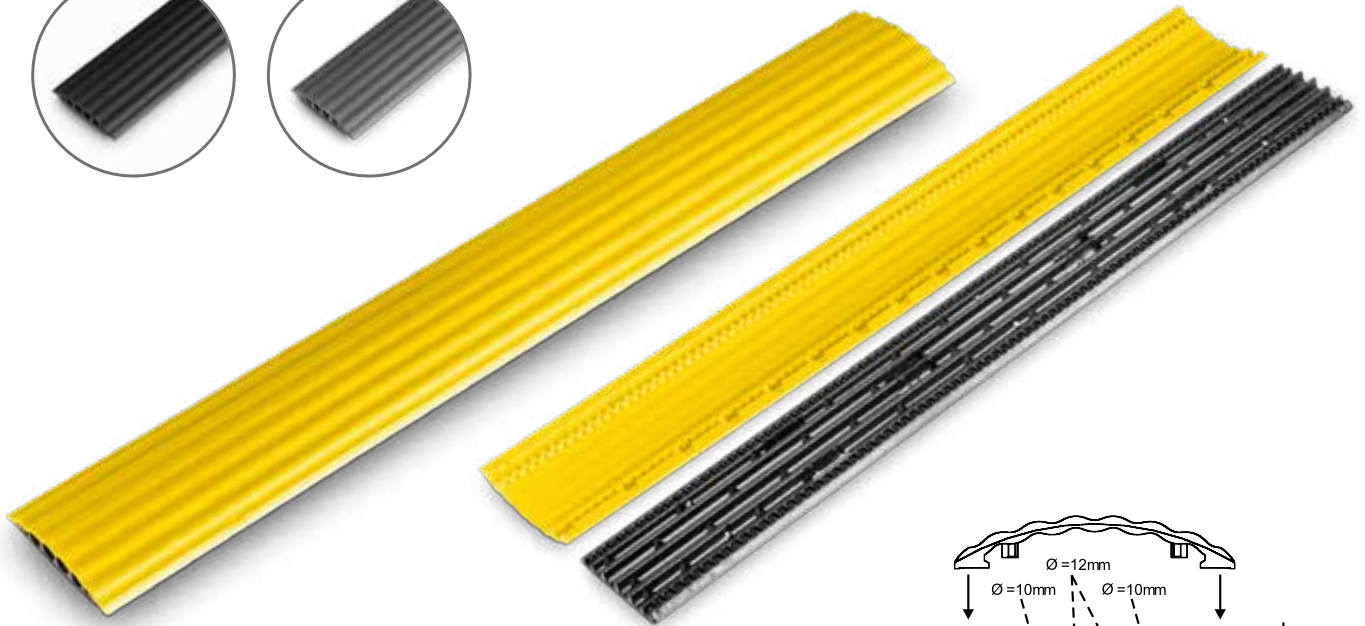
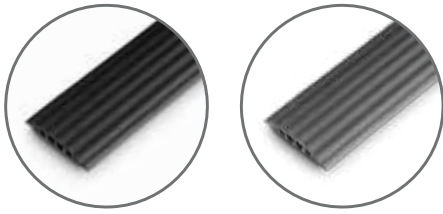
Mainly in halls, at trade fairs, etc.

### SPECIFICATIONS

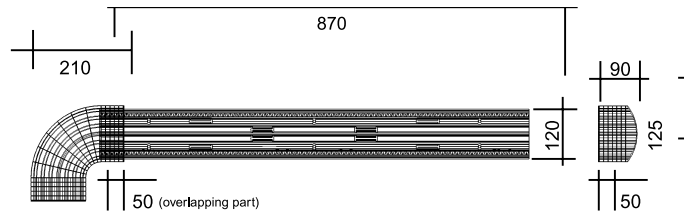
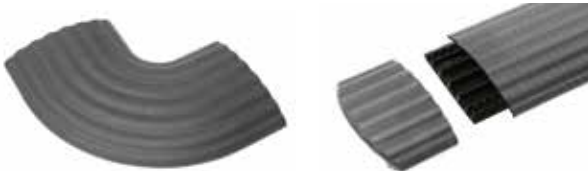
Art. No.:	85100	85103 (base), 85100 (drop-over)
Product:	7-channel cable protector	5-channel cable protector
Channel W x H:	28 x 23 mm (channels 1 and 7), 28 x 27 mm (channels 2 and 6), 28 x 29 mm (channels 3 and 5), 28 x 30 mm (channel 4)	22 x 21 mm (channels 1 to 5)
Material:	TPU (Thermoplastic Polyurethane)	TPU (Thermoplastic Polyurethane)
Shore A hardness:	88 ± 4	88 ± 4
Load capacity:	approx. 2 t / 20 x 20 cm (typical tyre footprint area)	approx. 2 t / 20 x 20 cm (typical tyre footprint area)
Fire rating:	B2 (B1 also available)	B2 (B1 also available)
Resistant to:	most acids, oils, gasoline	most acids, oils, gasoline
Operating temperature:	-30° to +60° C	-30° to +60° C
Length:	800 mm	800 mm
Width:	430 mm	430 mm
Height:	40 mm	40 mm
Weight:	3.5 kg	7 kg (base with drop-over)

# CABLE PROTECTION SYSTEMS

Available in black, yellow and grey!



45° Curve Art. No. **85161GREY** End ramp Art. No. **85168GREY**



## 85160 / 85160GREY / 85160YEL

### DEFENDER OFFICE 4 MINI CHANNELS - INDOOR & DESIGN SOLUTION

Available with a choice of black, grey and yellow colors the Defender® OFFICE cable protection system is the elegant solution for secure pedestrian traffic in conference facilities, exhibitions, public buildings, retail outlets, shopping malls, trade shows and offices. Featuring straight, 90° and end ramps with cutting guides for length adjustment, zigzag connection and bolt holes for ground fixing the Defender® OFFICE system provides versatile cable routing while preventing tripping hazards.

#### APPLICATION RANGE

Mainly in offices, halls, at trade fairs, etc.

#### DEFENDER® OFFICE 90° CURVE

Art. No.: 85161 (black), 85161GREY, 85161YEL

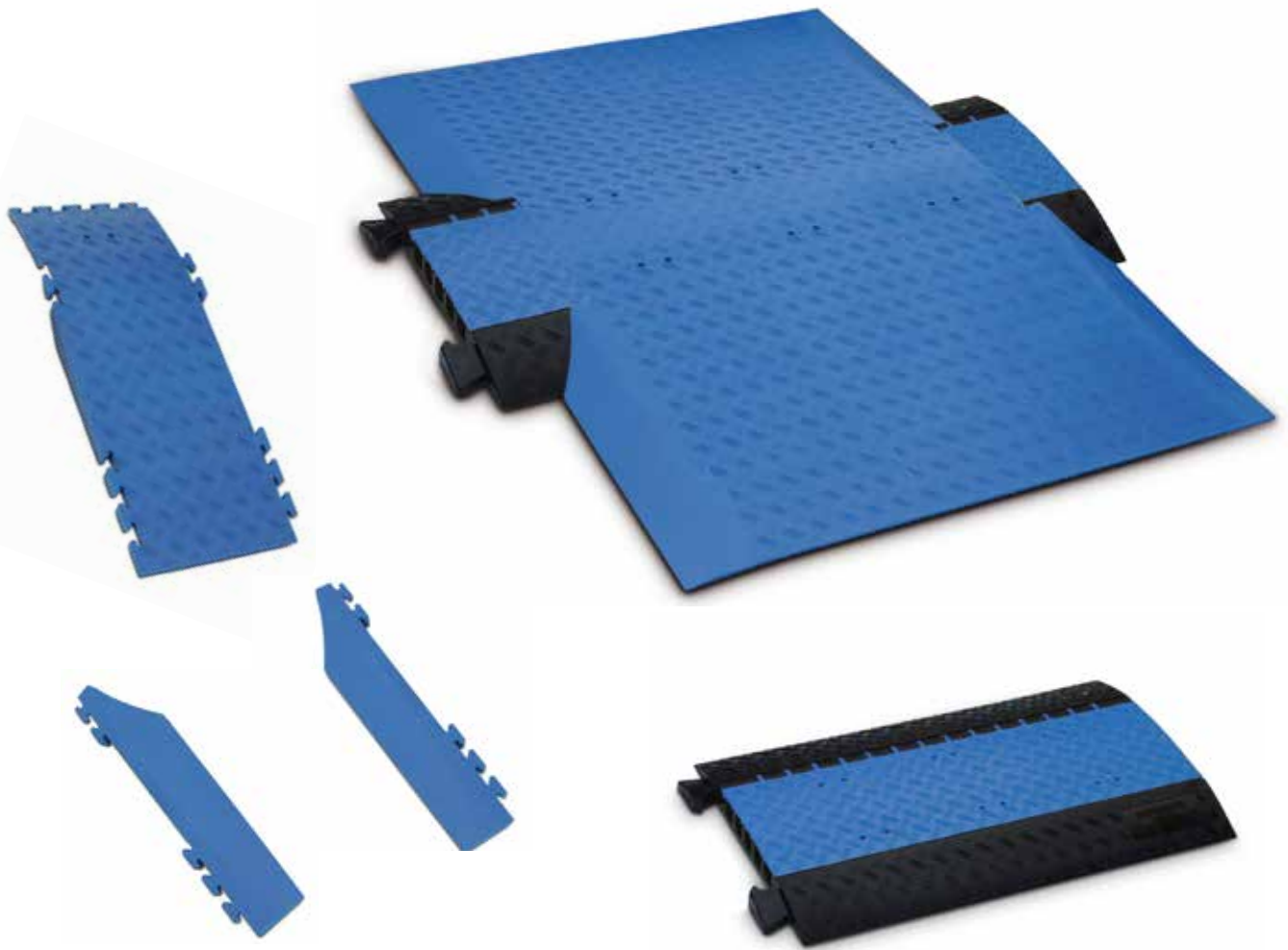
#### DEFENDER® OFFICE END RAMP

Art. No.: 85168 (black), 85168GREY, 85168YEL

#### SPECIFICATIONS

Art. No.:	85160 (Black) / 85160GREY (Grey) / 85160YEL (Yellow)
Product:	4-channel cable protector
Channel W x H:	10 x 10 mm (channels 1 and 4), 12 x 12 mm (channels 2 and 3)
Material:	TPU (Thermoplastic Polyurethane)
Shore A hardness:	92 ± 4
Load capacity:	2 t / 20 x 20 cm (typical tyre footprint area)
Fire rating:	B2
Resistant to:	acids, oils, gasoline
Operating temperature:	-30° to +60° C
Length:	870 mm
Width:	120 mm
Height:	20 mm
Weight:	1.24 kg

# CABLE PROTECTION SYSTEMS



## 8530#####

### DEFENDER WHEELCHAIR RAMP

The Defender® WHEELCHAIR RAMP has been designed for use with the Defender® MIDI cable protection system also providing easy access for walking frames, trolleys and dollies. The set includes a Defender® MIDI cable guard with blue lid and bolt holes for the required ground fixing, 6 threshold ramps and 4 side slants. Made from acid, oil, solvent and gasoline resistant TPU (Thermoplastic Polyurethane) the Defender® WHEELCHAIR RAMP components are also available individually for ramp width extension. Please note: the Defender® Wheelchair Ramp does not support vehicle traffic.

### DEFENDER® WHEELCHAIR RAMP SET

Art. No.: 85305SET

### DEFENDER® WHEELCHAIR RAMP COMPONENTS

Art. No.: 85300BLUE Defender® MIDI Cable Protector

Art. No.: 85306 Threshold Ramp

Art. No.: 85307L Side Slant left

Art. No.: 85307R Side Slant right

### SPECIFICATIONS

Product:	Wheelchair ramp set
Channel W x H:	34 x 36 mm (channels 1 to 5)
Material:	TPU (Thermoplastic Polyurethane)
Shore A hardness:	88 ± 4
Load capacity:	approx. 5 t / 20 x 20 cm (typical tyre footprint area)
Fire rating:	B2 (B1 also available)
Resistant to:	most acids, oils, gasoline
Operating temperature:	-30° to +60° C
Length:	1340 mm
Width:	Ramp: 930 mm
Height:	62 mm
Weight:	30.05 kg



# CABLE PROTECTION SYSTEMS



## 85BOX

### DEFENDER BOX THE SMART LOGISTIC STORAGE SOLUTION

The Defender® BOX is the ideal solution for transporting and storing Defender® cable protection systems. The sturdy design features a EUR-pallet size base made of heavy duty plastic and hinged steel grate sides for easy loading. For additional convenience the Defender® BOX is stackable and collapsible.

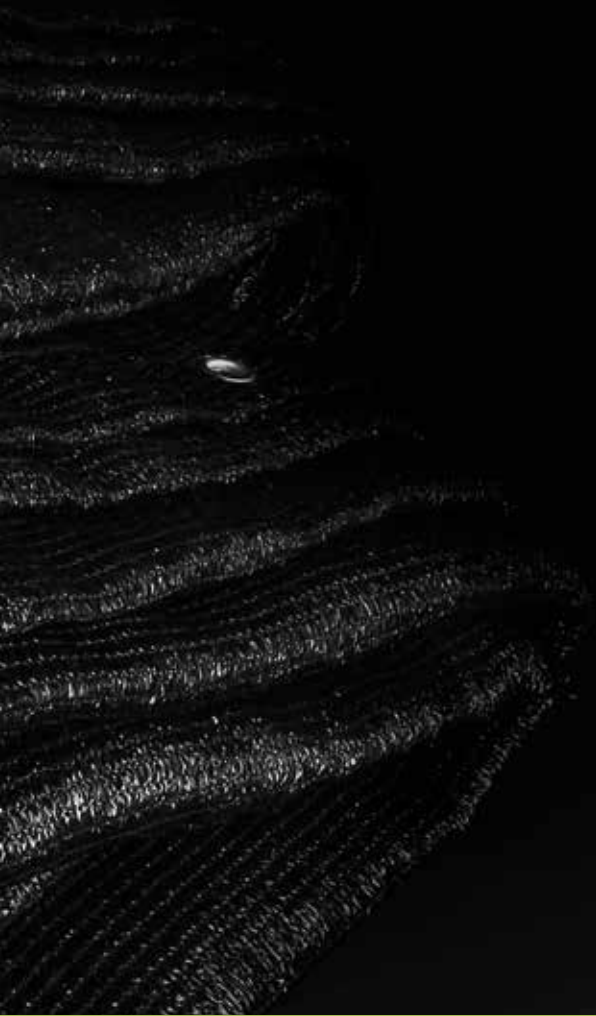
#### SPECIFICATIONS

Product:	Storage and transport box
Material:	PE and steel with lacquer coating
Load capacity:	≤ 1 t
Dimensions (W x H x D):	1250 x 1285 x 840 mm
Weight:	50,5 kg



## **ADAM HALL STAGE FABRICS** - PROTECTIVE AND DECORATIVE

Adam Hall provides a wide range of stage fabrics for protective and decorative purposes. These include lightweight stage mesh that is wind-permeable and tear-resistant, fence panel gauze or blackout cloth for backdrops and curtains. Our stage fabrics are available in bulk and convenient ready-made sizes.



# GAUZE

## GAUZE IS ESSENTIAL FOR STAGES, FOH AND DELAY TOWERS OR PLATFORMS

The lightweight but stable-and tear-resistant stage mesh is especially suited for outdoor events as covers, backdrops, curtains, and for privacy. The permeability of the material is an important property, as it prevents stress due to wind, gusts and storms, and ensures a stable structure.

The stage gauze by Adam Hall is available in four grades from close to loose-knit with different levels of opacity and a wind permeability of 16 to 50%. You will be able to find the appropriate material for almost all weather conditions. All versions are water-resistant, acid- and weatherproof, UV-resistant, color-fast and washable for up to 3 years, and suitable for temperatures from -30° to 70°.

It will save time in setting up, and can be easily attached to all truss systems using cable ties or Spannfix. In addition to providing protection for stage equipment and performers, it also creates a professional look. The gauze fabrics by Adam Hall can be individually printed upon request, and can therefore be turned into an eye-catching advertising space.

## GAUZE FOR OUTDOOR EVENTS

The mesh, most likely named after the Palestinian city of Gaza, is also used for open-air events, where it is used in the panelling of stage structures, FOH and delay-towers, podiums and for setting up stages. Known in English as "stage mesh", the material also serves as backdrops, stage curtains and especially for privacy and as protection against dust and wind.

## MAIN FEATURES OF GAUZE

The mesh fabric, made of polyethylene, has special characteristics and is suitable for a broad scope of applications: it is extremely tear-resistant, structurally stable, while being lightweight and classified as a B1 flame retardant according to the DIN 4102 standard. It is also water-resistant, weatherproof, UV resistant and last but not least, it is washable.

## GAUZE IS A WIND-PERMEABLE!

The most important feature of the stage gauze is its wind permeability. It prevents the sail effect and ensures stability for mobile constructions, even at higher wind speeds. Adam Hall offers this material in four different grades ranging from fine to loose knit, with wind permeability factors of 16 to 50%. So, the stability of stage structures can be accurately calculated and the appropriate mesh selected according to the weather forecast and wind strength.

## GAUZE AND TRANSPARENCY

The weave structure also determines the levels of blackout and sound permeability. Therefore, loose-knit mesh is suitable for covering speaker towers, while the particularly fine-mesh material is already opaque from a distance of five metres.

## FURTHER USES FOR GAUZE

Thanks to its special properties, the polyethylene gauze is not only used in the event-technology – it is for example ideally suited as turf protection, because it is breathable, for the lining of trade fair stands, as paintball netting and for fence panel covering. With the B1 classification, it is also suitable as a cover for sprinkler systems on ceilings.

## GAUZE FROM ADAM HALL

Gauze from Adam Hall is available in black and white, by the metre, and is ready-made with hem and eyelets. It can be easily attached with cable ties to all carrier systems and trusses, protects technology as well as performers whilst offering a professional stage appearance.





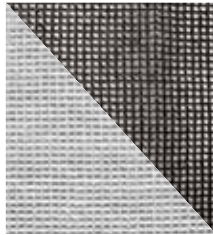
## GAUZE 100

- Type: 100, high density
- Color: black or white
- Weight: 250 g/m<sup>2</sup>
- Flame retardancy: B1 (DIN 4102)
- Wind-permeable: 16 %
- Additionally M1 certified (France)



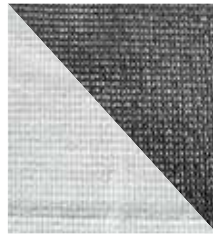
## GAUZE 201

- Type: 201, large mesh
- Color: black or white
- Weight: 125 g/m<sup>2</sup>
- Flame retardancy: B1 (DIN 4102)
- Wind-permeable: 50 %



## GAUZE 202

- Type: 202, medium mesh
- Color: black or white
- Weight: 140 g/m<sup>2</sup>
- Flame retardancy: B1 (DIN 4102)
- Wind-permeable: 37 %



## GAUZE 203

- Type: 203, fine mesh
- Color: black
- Weight: 160 g/m<sup>2</sup>
- Flame retardancy: B1 (DIN 4102)
- Wind-permeable: 27 %
- EMPA (Swiss) certified



## GAUZE GENERAL INFORMATION

- Ready for use!
- Completely bordered and provided with eyelets every 50 cm (all around)
- UV and fade resistant up to 3 years
- Washable
- Non-transparent from a distance of 5 m approx
- Temperature range -30° to +70°C
- Custom-made sizes available on request
- Tolerances of +/- 5% are due to technical reasons depending on temperature and humidity
- Applications: stage mesh, site fence, grass protection matting, wind, sun and dust screen, exhibition stand cladding

**CUSTOMISABLE  
WITH YOUR LOGO!**



Art.No.	Description	Sold per
0155100B	Gauze 100, width 3m, black	LM
0155X34B	Gauze 100 3 x 4 m with grommets, black	PC
0155X35B	Gauze 100 3 x 5 m with grommets, black	PC
0155X36B	Gauze 100 3 x 6 m with grommets, black	PC
0155X45B	Gauze 100 4 x 5 m with grommets, black	PC
0155X46B	Gauze 100 4 x 6 m with grommets, black	PC
0155X56B	Gauze 100 5 x 6 m with grommets, black	PC
0155X34W	Gauze 100 3 x 4 m with grommets, black	PC
0155X35W	Gauze 100 3 x 5 m with grommets, white	PC
0155X36W	Gauze 100 3 x 6 m with grommets, white	PC
0155X45W	Gauze 100 4 x 5 m with grommets, white	PC
0155X46W	Gauze 100 4 x 6 m with grommets, white	PC
0155X56W	Gauze 100 5 x 6 m with grommets, white	PC
0155100W	Gauze 100, width 3 m, white	LM
0156100B	Gauze 201, width 3 m black	LM
0156X34B	Gauze 201 3 x 4 m with grommets, black	PC
0156X35B	Gauze 201 3 x 5 m with grommets, black	PC
0156X36B	Gauze 201 3 x 6 m with grommets, black	PC
0156X45B	Gauze 201 4 x 5 m with grommets, black	PC
0156X46B	Gauze 201 4 x 6 m with grommets, black	PC
0156X56B	Gauze 201 5 x 6 m with grommets, black	PC
0156X34W	Gauze 201 3 x 4 m with grommets, black	PC
0156X35W	Gauze 201 3 x 5 m with grommets, white	PC
0156X36W	Gauze 201 3 x 6 m with grommets, white	PC
0156X45W	Gauze 201 4 x 5 m with grommets, white	PC
0156X46W	Gauze 201 4 x 6 m with grommets, white	PC
0156X56W	Gauze 201 5 x 6 m with grommets, white	PC
0156100W	Gauze 201, width 3 m, weiß	LM
0157100B	Gauze 202, width 3 m, black	LM
0157X34B	Gauze 202 3 x 4 m with grommets, black	PC
0157X35B	Gauze 202 3 x 5 m with grommets, black	PC
0157X36B	Gauze 202 3 x 6 m with grommets, black	PC
0157X45B	Gauze 202 4 x 5 m with grommets, black	PC
0157X46B	Gauze 202 4 x 6 m with grommets, black	PC
0157X56B	Gauze 202 5 x 6 m with grommets, black	PC
0157X34W	Gauze 202 3 x 4 m with grommets, white	PC
0157X35W	Gauze 202 3 x 5 m with grommets, white	PC
0157X36W	Gauze 202 3 x 6 m with grommets, white	PC
0157X45W	Gauze 202 4 x 5 m with grommets, white	PC
0157X46W	Gauze 202 4 x 6 m with grommets, white	PC
0157X56W	Gauze 202 5 x 6 m with grommets, white	PC
0157100W	Gauze 202, width 3 m, white	LM
0158100B	Gauze 203, width 3 m, black	LM
015850B	Gauze 203, width 2 m, black	LM
0158X34B	Gauze 203 3 x 4 m with grommets, black	PC
0158X35B	Gauze 203 3 x 5 m with grommets, black	PC
0158X36B	Gauze 203 3 x 6 m with grommets, black	PC
0158X45B	Gauze 203 4 x 5 m with grommets, black	PC
0158X46B	Gauze 203 4 x 6 m with grommets, black	PC
0158X56B	Gauze 203 5 x 6 m with grommets, black	PC
0158X34W	Gauze 203 3 x 4 m with grommets, white	PC
0158X35W	Gauze 203 3 x 5 m with grommets, white	PC
0158X36W	Gauze 203 3 x 6 m with grommets, white	PC
0158X45W	Gauze 203 4 x 5 m with grommets, white	PC
0158X46W	Gauze 203 4 x 6 m with grommets, white	PC
0158X56W	Gauze 203 5 x 6 m with grommets, white	PC

PC: Piece / LM: Linear meter

# FENCE PANEL GAUZE

## GAUZE TYPE 800 - 1.76 X 3.41 M, WITH EYELETS

Adam Hall fence panel covers are made of high density polyethylene which is perfect for vision and dust protection for open-air events and construction sites. The 1.76 x 3.41 m large tarpaulins are PVC reinforced at the hems, are fitted all the way around with eyelets at 50 cm intervals and are suitable for all standard mobile fences. The close-knit, 200 g heavy mesh fabric with high opacity is 20% wind permeable, waterproof, weather resistant and flame resistant according to DIN 4102-B1. Adam Hall fence panel covers are available in 9 colors (black RAL9005, grey RAL7040-7045, white, RAL9003 green RAL6028 dark blue RAL5003, light blue RAL5017, red RAL3020, orange RAL2009, yellow RAL1016-1018).



### FEATURES

- PVC-reinforced hem and eyelets all the way around (50 cm intervals)
- Zinc plated eyelets
- Inner diameter of the eyelets: 0.9 cm, outer diameter 2 cm
- Waterproof, weather resistant
- Non-transparent from a distance of 5 m approx
- Temperature range from -30°C to +70°C
- Wind Permeability: approx. 20%
- B1 certified in accordance with DIN 4102
- Dimensional tolerances of +/- 5% are of a technical nature and depend on the temperature and humidity
- For use as screening at open-air events or as a construction fence panel to prevent dust

### SPECIFICATIONS

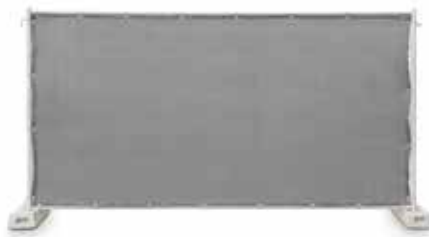
Material:	HDPE (high density polyethylene)
Type:	800, close-knit
Width:	3.41 m
Height:	1.76 m
Weight:	200 g/m <sup>2</sup>
Fire Protection Class:	flame retardant according to DIN 4102-B1
Wind Permeability:	20%.



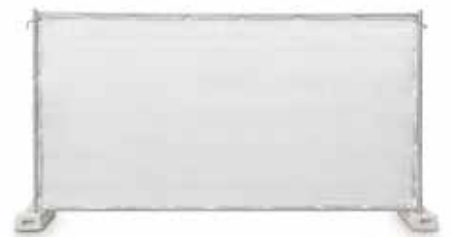
# FENCE PANEL GAUZE



**Black - Art. No. 0159XBAU1**



**Grey - Art. No. 0159XBAU2**



**White - Art. No. 0159XBAU3**



**Green - Art. No. 0159XBAU4**



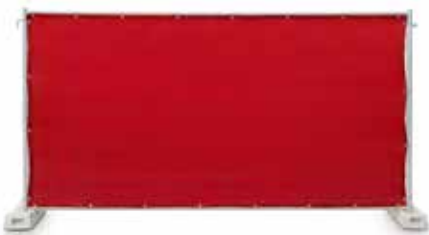
**Yellow - Art. No. 0159XBAU5**



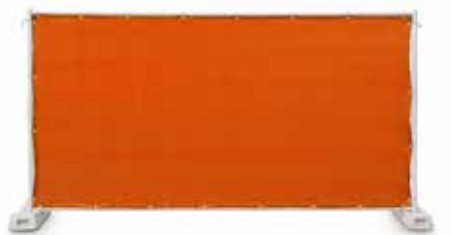
**Dark Blue - Art. No. 0159XBAU6**



**Light Blue - Art. No. 0159XBAU7**



**Red - Art. No. 0159XBAU8**



**Orange - Art. No. 0159XBAU9**

# BACKDROPS & CURTAINS



## 0150 / 150WH BLACKOUT CLOTH

### MADE IN GERMANY!

- Fire protection class: Flame retardant according to DIN 4102 B1 and France M1 / EN 13773
- Width: 3 m
- Weight: 300 g/m<sup>2</sup>
- Color: black or white

Fireproof due to impregnation -  
Do not wash Molton.



## 0151B / 0151WH DECO CLOTH

### MADE IN GERMANY!

- Fire protection class: Flame retardant according to DIN 4102 B1 and France M1 / EN 13773
- Width: 3 m
- Weight: 160 g/m<sup>2</sup>
- Color: black or white

Fireproof due to impregnation -  
Do not wash Molton.



## 0160 B / 0160 WH ACOUSTIC CLOTH

### MADE IN GERMANY!

- Fire protection class: Flame retardant according to DIN 4102 B1 and France M1 / EN 13773
- Width: 3 m
- Weight: 500 g/m<sup>2</sup>
- Color: black or creme
- Weighted sound absorption coefficient (ISO 11654) :  
w = 0,70 creme / 0.60 black
- SOUND Reduction Coefficient NRC (ASTM C423) : 0,65 creme / 0,60 black
- Fire protection class: Flame retardant according to DIN 4102 B1 and France M1 / EN 13773

Fireproof due to impregnation -  
Do not wash Molton.



# BACKDROPS & CURTAINS



## 0151X## DECO CURTAINS

### MADE IN GERMANY!

Black deco cloth impregnated in flame retardant and 160-g-quality, as curtain, backdrops or for decorative purposes. The fabrics have grommets at intervals of 25 centimeters along one side and are backed with an additional strip of webbing, permitting fast and secure installation both tightly stretched as well as loosely pleated. The grommets have a rustproof burnished plating and a 20-millimetre hole diameter. The outer edges are hemmed, while the bottom edge is unhemmed, so that the material can be cut to the necessary length quickly and easily.

Art. No.	Size
0151X33 / 0151X33WH	3 x 3m black or white
0151X34 / 0151X34WH	3 x 4m black or white
0151X35 / 0151X35WH	3 x 5m black or white
0151X36 / 0151X36WH	3 x 6m black or white
0151X43 / 0151X43WH	4 x 3m black or white
0151X53 / 0151X53WH	5 x 3m black or white
0151X63 / 0151X63WH	6 x 3m black or white
0151X64 / 0151X64WH	6 x 4m black or white
0151X66 / 0151X66WH	6 x 6m black or white



## 0152X## STAGE CURTAINS

### MADE IN GERMANY!

Stage Cloth impregnated with fire retardant (B1 according to DIN 4102) and 300-g-quality, as curtain, backdrops or for decorative purposes. The fabrics have grommets at intervals of 25 centimetres along one side and are backed with an additional strip of webbing, permitting fast and secure installation both tightly stretched as well as loosely pleated. The grommets have a rustproof burnished plating and a 20-millimetre hole diameter. The outer edges are hemmed, while the bottom edge is unhemmed, so that the material can be cut to the necessary length quickly and easily.

Art. No.	Size
0152X33 / 0152X33WH	3 x 3 m black or white
0152X36 / 0152X36WH	3 x 6 m black or white
0152X43 / 0152X43WH	4 x 3 m black or white
0152X53 / 0152X53WH	5 x 3 m black or white
0152X63 / 0152X63WH	6 x 3 m black or white
0152X64 / 0152X64WH	6 x 4 m black or white
0152X93 / 0152X93WH	9 x 3 m black or white
0152X96 / 0152X96WH	9 x 6 m black or white

# BACKDROPS & CURTAINS



## 0160X##

### ACOUSTIC-CLOTH B1 WITH BURNISHED GROMMETS HEMMED

#### MADE IN GERMANY!

Acoustic Curtains impregnated in flame retardant and 500-g-quality, for rehearsal room , studios and stages with excellent sound absorption coefficient. The fabrics have grommets at intervals of 25 centimeters along one side and are backed with an additional strip of webbing, permitting fast and secure installation both tightly stretched as well as loosely pleated. The grommets have a rustproof burnished plating and a 20-millimetre hole diameter. The outer edges are hemmed, while the bottom edge is unhemmed, so that the material can be cut to the necessary length quickly and easily.

Sold by linear meter!

Art. No.	Size
0160X33 / 0160X33WH	3 x 3 m black or creme
0160X43 / 0160X43WH	4 x 3 m black or creme
0160X53 / 0160X53WH	5 x 3 m black or creme

# ACCESSORIES



## 859##

### FINE-GROOVED RUBBER MAT

- 2,6 mm (± 0,2 mm) thick
- Non-slip. Resilient covering for all high traffic areas
- Weather proof
- Lies flat
- Coarsely patterned underside
- Ideal for protecting cables of all types
- Matting can be trimmed to the desired size

We recommend the use of this product in combination with adhesive safety tape **5803**.

Art. No.	Size	Weight
<b>85900B</b>	1.0 x 8.0 m	26.8 kg
<b>85970</b>	0.7 x 10.0 m	23.0 kg



## 58##

### HOOK AND LOOP FASTENER DOUBLE ROLL

- Hook & Loop fastening tape
- Sold in 25 m twin rolls

Art. No.	Width
<b>5810</b>	20 mm
<b>5811</b>	20 mm (self-adhesive)



## 58##

### BACK TO BACK HOOK AND LOOP FASTENER

Back-to-Back tape, one side hooks, other side loops. Good solution to manufacture strong and custom made cable ties, also to be used for many applications in speaker cabinet and case building.

- Length: 25 m

Art. No.	Width
<b>5815</b>	16 mm
<b>5816</b>	20 mm
<b>5817</b>	30 mm

# ACCESSORIES



## VBC4250### SPANNFIX

Spannfix bungee cord 4 mm x 250 mm with plastic hook. The ideal reusable elastic chord for fixing and mounting signs, banners, covers etc.

- Weight: 0.02 kg

Art. No.	Width
VBC4250BLK	black
VBC4250WHI	white



## VBC4250### SPANNFIX

Spannfix bungee cord 4 mm x 250 mm with plastic hook. The ideal reusable elastic chord for fixing and mounting signs, banners, covers etc.

- Weight: 0.02 kg

Art. No.	Width
VBC4250BLK	black
VBC4250WHI	white



## VBC5250### SPANNFIX

Spannfix bungee cord 5 mm x 250 mm with metal hook.

- Weight: 0.03 kg

Art. No.	Color
VBC5250BLK	black
VBC5250WHI	white



## VMINC### HOLDON CLIP - MINI

Mini Clip black for fastening molton, canvas, covers etc. This clip is particularly suited for fastening materials that do not have eyelets or other fastening possibilities. The material is simply clamped down by the clip, so that the material itself does not get damaged.

- Dimensions (WxHxD): 35 x 10 x 40 mm
- Weight: 0.02 kg

Art. No.	Color
VMINCBLK	black
VMINCWHI	white



## VMINC### HOLDON CLIP - MINI

Mini Clip black for fastening molton, canvas, covers etc. This clip is particularly suited for fastening materials that do not have eyelets or other fastening possibilities. The material is simply clamped down by the clip, so that the material itself does not get damaged.

- Dimensions (WxHxD): 35 x 10 x 40 mm
- Weight: 0.02 kg

Art. No.	Color
VMINCBLK	black
VMINCWHI	white



## VMIDC### HOLDON CLIP - MIDI

Midi Clip black (holds up to 100 kg) for fastening molton, canvas, covers etc. This clip is particularly suited for fastening materials that do not have eyelets or other fastening possibilities. The material is simply clamped down by the clip, so that the material itself does not get damaged.

- Dimensions (WxHxD): 40 x 18,5 x 70 mm
- Weight: 0.02 kg

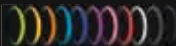
Art. No.	Color
VMIDCBLK	black
VMIDCWHI	white

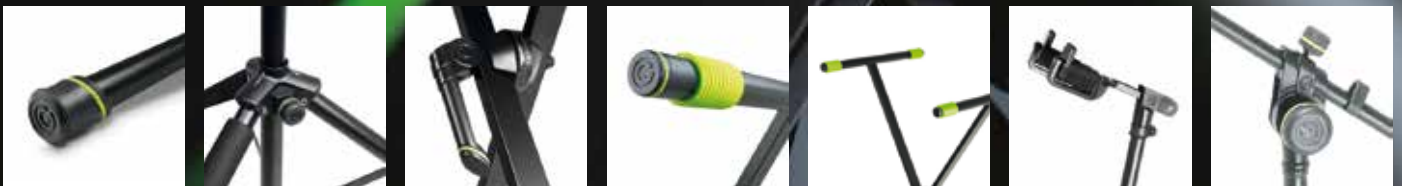


**Gravity**<sup>®</sup>  
stand your ground.

# THE NEW FORCE

IN THE FIELD OF INNOVATIVE PREMIUM STANDS.

available colours: 



[facebook.com/gravitystands](https://facebook.com/gravitystands)  
[youtube.com/gravitystands](https://youtube.com/gravitystands)  
[blog.adamhall.com](https://blog.adamhall.com)

DESIGNED & ENGINEERED IN GERMANY  
**gravitystands.com**

Gravity<sup>®</sup>  
is a brand of  **adam hall** experience  
event technology

**SOUND**  
TECHNOLOGY

**LIGHT**  
TECHNOLOGY

**STAGE**  
EQUIPMENT

**HARDWARE**  
FOR FLIGHTCASES

share the experience at  
[adamhall.com](https://adamhall.com)



## ADAM HALL PDUs AND POWER STRIPS - POWER WHERE YOU NEED IT

Available from heavy duty 19" rackmount to economy versions Adam Hall power distribution units and power strips come in a variety of configurations. Featuring front or rear facing outlets, flip lid covers, illuminating switches or daisy chaining capability they provide a choice of models for professional, office and home applications.





# POWER DISTRIBUTION



## 87480

### 19" / 2U POWER DISTRIBUTION UNIT 9 SOCKETS

Blue Amping Power. 19"/2 U mains distribution Unit, designed for stage use, fulfilling all relevant safety requirements at an affordable price.

- 3 x indicator lights to control Phase L1, L2, L3
- Power inlet via 32A CEE 5 pole panel plug red color
- Parallel 32 A panel socket outlet red color, outlet front panel
- 3 x safety plug socket with flip cover, grey color fused 3 x C16A automatic circuit breaker
- Outlet rear 6 x safety plug socket with flip cover
- Dimensions: 483 x 88 x 70 mm
- Sheet steel powder coated housing
- Made in Germany, compliant to CE/VDE/DIN
- Weight: 3.06 kg



# POWER DISTRIBUTION



## 87472 19" / 2U POWER DISTRIBUTION UNIT 9 SOCKETS

16 A / 250 V AC

On the front, 3 practical outlets with hinged lids. On the rear, 6 diagonally arranged sockets for easy insertion of power supplies, angle plugs, etc. With independent twin-pole power switches for separate switching of the front and rear. Robust powder coated steel housing.

- Includes a 3m x 1.5 mm<sup>2</sup> mains cord with safety plug (CEE 7/7).
- Dimensions (WxDxH):  
483 x 88 x 90 mm
- Installation depth: 75 mm
- Weight: 1.95 kg



## 87473 19" POWER DISTRIBUTION UNIT 6 SOCKETS, 3 CIRCUITS

Mains distribution unit with three separate circuits 19"/1 U. 3 x 2 safety plugs outlets (red/white/black) with 16A/250 V AC each.

- Black aluminum housing
- 2 m cable with 16A 400V per phase CEE plug
- Weight 1.12 kg

# POWER DISTRIBUTION



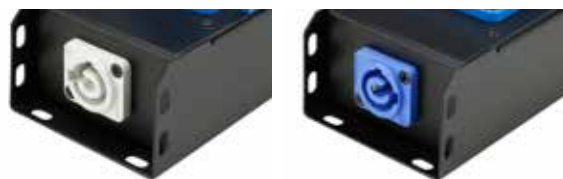
## **874716** **POWER STRIP 1 U 19 SOCKETS**

The 874716 provides 16 type F grounded outlets in a 19" aluminum enclosure with permanently attached 2 m cord and angled CEE 7/7 power plug. The 1 U rackmount power strip features individual illuminating on/off switches for the 8 front and rear outlets each plus overload protection with individual circuit breakers and reset buttons.



## **87476** **POWER STRIP 6-WAY**

The 87476 offers a total of 6 earthed power sockets in a 19" 1U aluminum housing with a 2 m power cable and angled CEE 7/7 plugs. Each power socket is fitted with an illuminated rocker switch on the front that is individually switchable.



## **AHPROPRT4** **4-OUTLET POWER STRIP**

Designed for easy daisy chaining, the PROPRT 4 power strip provides 4 type F grounded outlets with individual flip lid covers plus blue and white power I/O connectors. Featuring a rugged all-metal enclosure and two female thread M10 suspension points it is ideal for neat, custom power distribution on stages, trusses and in gear rigs.

- Rated @ 250 V, 16 A.
- 4 IP54 outlets with flip lid covers
- Blue and white power I/O connectors
- All-metal enclosure
- 2 M10 inserts
- GS and CE marks

# POWER DISTRIBUTION



## **AHPROPORT4T** **4-OUTLET POWER STRIP**

The PROPORT 4T is the ideal power strip for tidy and specific power distribution on stage, on trusses and in equipment rigs. Its robust metal housing features 4 protective contact socket outlets with hinged lids, a black/yellow power I/O for power supply and transmission, and two M10 threaded inserts for mounting and fixed installation.

- Rated @ 250 V, 16 A.
- 4 IP54 outlets with flip lid covers
- Black and yellow power I/O connectors
- All-metal enclosure
- 2 M10 inserts
- GS and CE marks

## **AHPROPORT6T** **6-OUTLET POWER STRIP**

The PROPORT 6T is the ideal power strip for tidy and specific power distribution on stage, on trusses and in equipment rigs. Its robust metal housing features 6 protective contact socket outlets with hinged lids, a black/yellow power I/O for power supply and transmission, and two M10 threaded inserts for mounting and fixed installation.

- Rated @ 250 V, 16 A.
- 6 IP54 outlets with flip lid covers
- Black and yellow power I/O connectors
- All-metal enclosure
- 2 M10 inserts
- GS and CE marks

## **AHPROPORT4TT** **5-OUTLET POWER STRIP**

The PROPORT 4TT is ideal for tidy and specific power distribution on stage, on trusses and in equipment rigs. The robust metal housing features a black/yellow power input socket for power supply and 5 black/yellow power outlets for power transmission (4 on top of the distributor). 2 x M10 threaded inserts for mounting and fixed installation

- Rated @ 250 V, 16 A.
- 4 IP54 outlets with flip lid covers
- Black and yellow power I/O connectors
- All-metal enclosure
- 2 M10 inserts
- GS and CE marks

# POWER DISTRIBUTION



## AHPROPORT4CEE 4-OUTLET POWER STRIP

Designed for easy daisy chaining, the PROPORT 4 power strip provides 4 type F grounded outlets with individual flip lid covers plus blue and white power I/O connectors. Featuring a rugged all-metal enclosure and two female thread M10 suspension points it is ideal for neat, custom power distribution on stages, trusses and in gear rigs.

- Rated @ 250 V, 16 A.
- 4 IP54 outlets with flip lid covers
- Black and yellow power I/O connectors
- All-metal enclosure
- 2 M10 inserts
- 40 cm power cable with 16 A CEE plug



VDE Certificated



## 87471 19" POWER DISTRIBUTION UNIT 8 SOCKETS

1 U, with illuminated 2-pole switch on the front panel and 8 safety plug mains outlets on the rear panel. 16A/250 V AC.

- Black aluminum housing
- 54 mm deep with 2 m cable
- Weight: 0.85 kg
- Mains Distribution Unit 19"/1 U
- 19" ears can be turned around

Also available with "french standard" connectors **87478**



## 87471T 19" RACKMOUNT 8 OUTLET POWER STRIP

The 87471T provides 8 type F grounded outlets on the rear of a 19" aluminum enclosure. The front panel features a black and yellow power twist power inlet and illuminated on/off switch.

- Rated @ 250 V, 16 A
- 8 x 45° angle rear outlets
- Illuminated on/off switch
- Removable power supply with
- black-yellow power twist connector



# POWER DISTRIBUTION



## 87471IEC 19" POWER STRIP 1 U WITH 10 IEC CONNECTORS

This 1U rackmount power strip provides ten IEC C13 grounded outlets on the rear of a 19" aluminum enclosure. The front panel features a C14 male inlet, an illuminated master on/off switch and a resettable circuit breaker for overload protection.

- Rated @ 250 V, 16 A
- 10 x IEC C13 grounded rear outlets
- Illuminated on/off switch
- Push-to-reset circuit breaker
- 10 x 1.5 m IEC cables included



## 87471USB 8-OUTLET 19" RACKMOUNT POWER STRIP WITH DUAL USB CHARGING PORTS AND ON/OFF SWITCH

The 87471USB features eight type F grounded safety outlets plus two type A USB ports to charge most USB devices. This professional 19" power strip comes in a rugged aluminum housing with permanently attached 2 m power cord, illuminated on/off rocker switch and reversible rackmount angle brackets.

- Number of outlets (earthing contact/ IEC 7/4): 45° angled, 8
- USB connector: Typ A
- Max. charge current: 1A
- Cable connector: Earthing contact (CEE 7/7), angled
- Conductor cross-section: 3X1.5 mm<sup>2</sup>
- 16A/250V AC
- Housing material: aluminum



## 87478 19" MAINS POWER STRIP 8 SOCKETS, FRENCH CONNECTORS

- Mains Distribution Unit 19"/1 U
- Illuminated 2-pole switch on the front panel
- 8 french mains outlets on the rear panel
- 16A/250 V AC
- Black aluminum housing
- 54 mm deep
- 2 mtr. cable
- 19" ears can be turned around

# POWER DISTRIBUTION



## **87470** POWER DISTRIBUTION UNIT 4 SOCKETS

Professional compact mains distribution unit with four safety plug mains. Built in a stable aluminum housing 30 cm length (not 19"). Ideal for power adaptors due to the larger spacing between the outlets. Four mounting positions are possible thanks to the variable mounting clips. Predestinated to be screwed to the inside of racks or similar surfaces (screws not included).

- Length of cable: 2 m
- Weight: 0.6 kg
- Cross section of the inner conductors: 3 x 1.5mm<sup>2</sup>
- 16 A / 250V AC

Also available with USB power outlets: **87470USB**



## **87470USB** 4-OUTLET POWER STRIP WITH DUAL USB CHARGING PORTS

The 87470USB features four type F grounded safety outlets plus two type A USB ports to charge most USB devices. This professional power strip comes in a rugged aluminum housing with permanently attached 2 m power cord and mounting angles that provide four mounting positions. The wide spacing of the 45° angled outlets easily accommodates multiple AC adapters side by side.

- Weight 0.56 kg



# POWER DISTRIBUTION

## 874714 POWER STRIP 1 U 14 SOCKETS



- Power distributor with long (3m) cord for up to 14 devices.
- 12 Safety sockets and 2 IEC sockets (not 19")
- Type: 96cm/ 44.5 mm
- Number of outlets (earthing contact / IEC 7/4): 45° angle, 12
- Number of outlets (IEC C14): 2
- Cable Length: 3 m
- Cable connector: Earthing contact (CEE 7/7), angled
- Conductor cross-section: 2.5 mm<sup>2</sup>
- Operating Voltage: 250 V
- Max. current: 16 A
- Housing material: aluminum
- W/H/D: 960 x 44 x 44 mm
- Other Features: Illuminated on / off switch, mounting bracket

## 8747IP3 3-OUTLET POWER STRIP WITH IP 44 RATING



The IP44 rated 8747 IP 3 features three type F grounded outlets and 1.4 m power cord with standard earthing contact CEE 7/7 power plug for additional reach and flexibility. It is suitable for general outdoor use.

- IP44 power strip
- Rated @ 250 V, 16 A
- 45° angled outlets

## 8747IP5 5-OUTLET POWER STRIP WITH IP44 RATING



The IP44 rated 8747 IP 5 features five type F grounded outlets and 1.4 m power cord with standard earthing contact CEE 7/7 power plug for additional reach and flexibility. It is suitable for general outdoor use.

- IP44 power strip
- Rated @ 250 V, 16 A
- 45° angled outlets

# POWER DISTRIBUTION



**8747S3**  
**3-OUTLET POWER STRIP WITH ON/OFF SWITCH**

The 8747S3 features three type F grounded outlets, an illuminated on/off switch and 1.4 m power cord for additional reach and flexibility.



**8747S6**  
**6-OUTLET POWER STRIP WITH ON/OFF SWITCH**

The 8747S6 features six type F grounded outlets, an illuminated on/off switch and 1.4 m power cord for additional reach and flexibility.



**8747S3USB**  
**3-OUTLET POWER STRIP WITH DUAL USB CHARGING PORTS AND ON/OFF SWITCH**

The 8747S3USB features three type F grounded outlets, two USB ports to charge most USB devices, an illuminated on/off switch and 1.4 m power cord for additional reach and flexibility.



# POWER DISTRIBUTION



## **8747X3** 3-OUTLET POWER STRIP

The 8747X3 features three type F grounded outlets.

- Rated 250 V, 16 A
- Cable connector: Earthing contact (CEE 7/7), angled
- Conductor cross-section: 3 x 1.5 mm<sup>2</sup>
- Operating Voltage: 250 V
- Max. current: 16 A
- Other Features: child protection

Art. No.	Cable length
----------	--------------

<b>8747X3</b>	1.4 m
---------------	-------

<b>8747X3M3</b>	3.0 m
-----------------	-------

<b>8747X3M5</b>	5.0 m
-----------------	-------



## **8747X6** 6-OUTLET POWER STRIP

The 8747X6 features three type F grounded outlets.

- Rated 250 V, 16 A
- Conductor cross-section: 3 x 1.5 mm<sup>2</sup>
- Operating Voltage: 250 V
- Max. current: 16 A
- Other Features: child protection

Art. No.	Cable length
----------	--------------

<b>8747X6</b>	1.4 m
---------------	-------

<b>8747X6M3</b>	3.0 m
-----------------	-------

<b>8747X6M5</b>	5.0 m
-----------------	-------



## **ADAM HALL SAFETY CABLES - SECURE AND PROTECT**

Adam Hall safety cables and wire ropes guard lighting fixtures and sound equipment against falling should the main attachment method fail. They are essential in stage rigging and fixed installations to meet legal safety requirements and available with heavy duty thimbles, screw links and carabiners.



# RIGGATEC - RIGGING ACCESSORIES



**RIG400200685**  
HANGING POINTS FOR 220 MM TRUSSES  
UP TO 75 KG

- For safe and compliant suspension of trusses
- For traverses with a diameter of about 32-35 mm
- Suitable for use on people
- Loadable up to 75 kg
- Statically checked
- For use in exhibition stand construction, retail, event technology
- Weight: 0.54 kg



**RIG400201101**  
HANGING POINT FOR 290 MM TRUSSES UP TO  
170 KG BLACK

- For safe and compliant suspension of trusses
- For traverses with a pipe diameter of ca. 48 - 51 mm
- Suitable for operation over people
- Loadable up to 170 kg
- Statically tested
- For applications in the field of exhibition stand construction, shopfitting, event technology
- Weight: 1.4 kg



**RIG400201100**  
HANGING POINT FOR 290 MM TRUSSES UP TO  
170 KG

- For safe and compliant suspension of trusses
- For traverses with a pipe diameter of ca. 48 - 51 mm
- Suitable for operation over people
- Loadable up to 170 kg
- Statically tested
- For applications in the field of exhibition stand construction, shopfitting, event technology
- Weight: 1.4 kg



**RIG400201105**  
HEAVY DUTY HANGING POINT FOR 290 MM  
TRUSSES UP TO 750KG

- For safe and compliant suspension of trusses
- for traverses with a pipe diameter of approx. 48 - 51 mm
- Suitable for operation over persons
- Loadable up to 750 kg
- Statically tested
- For applications in the field of exhibition stand construction, shopfitting, event technology
- Weight: 2.49 kg



# RIGGATEC - RIGGING ACCESSORIES



## **RIG400201110** HEAVY DUTY HANGING POINT FOR 400 MM TRUSS TO 750 KG

- For safe and correct suspension of trusses
- For traverses with a pipe diameter of approx. 48 - 51 mm
- Suitable for operation over persons
- Loadable up to 750 kg
- Statically tested
- For applications in the field of exhibition stand construction, shopfitting, event technology
- Weight: 2.9 kg



## **RIG608153380** UNIVERSAL PROJECTOR MOUNT FOR MOUNTING ON A TRUSS

- Compatible with all standard projectors manufacturers
- Wide range of accessories including Riggatec Halfcoupler, small silver (diameter 48-51mm)
- Easy installation
- Rotates 360° + tilt adjustment
- Also suitable for sloping surfaces
- Max. loading capacity 13,50kg
- The illustrated Beamer is not included
- Weight: 1.2 kg



## **RIG608154490** LCD / PLASMA TRUSS MOUNT 37-65", MAX 45 KG FOR FD 21 - FD 24

- Capacity 45 kg
- Compatible with all 37" - 65" devices
- Supports all VESA standards up to 800 x 400 mm
- Incl. 4 x Riggatec half clamp - halfcouplers small silver up to 75 kg (32 - 35 mm)



## **RIG608154495** LCD / PLASMA TRUSS MOUNT 37-65", MAX 45 KG FOR FD 31 - HD 44

- Capacity 45 kg
- Compatible with all 37" - 65" devices
- Supports all VESA standards up to 800 x 400 mm
- Riggatec half clamp - halfcouplers small silver up to 100 kg (48 - 51 mm)

# SAFETIES



## S37062B SAFETY ROPE 3 MM WITH SCREW LINK LENGTH 0.6 M BLACK

- 3 mm safety cable black
- Length: 0.6 m
- Galvanised
- 6 x 19 + fibre core
- Eyelet at both ends
- One end with non detachable chain link (galvanised, 5 mm thick)
- Stamped according to DIN 56926 (code number: 140)
- Up to 10 kg device weight
- Weight: 0.07 kg



## S45062B SAFETY ROPE 4 MM WITH SCREW LINK LENGTH 1 M BLACK

- 4 mm safety cable
- Length: 0.6 m
- Black galvanised
- 6 x 19 + fibre core
- Eyelet at both ends
- One end with unlosable chain link (black galvanised, 6 mm thick) 0.60 m
- Stamped according to DIN 56926 (code number: 200)
- Up to 20 kg device weight when using two safety cables
- Weight: 0.11 kg



## S37060 SAFETY ROPE 3 MM WITH SCREW LINK LENGTH 0.6 M

- 3 mm safety cable
- Length: 0.6 m
- Galvanised
- 6 x 19+ fibre core
- Eyelet at both ends
- One end with non detachable chain link (galvanised, 5mm thick)
- Stamped according to DIN56926 (code number: 140)
- Up to 10 kg device weight
- Weight: 0.05 kg



## S45100 SAFETY ROPE 4 MM WITH SCREW LINK LENGTH 1 M

- 4 mm safety cable
- Length: 1.0 m
- Galvanised
- 6 x 19 + fibre core
- Eyelet at both ends
- One end with unlosable quick screw link (90 x 9, with screw lock)
- Stamped: WLL 250 kg W/K
- Up to 20 kg device weight when using two safety cables
- Weight: 0.13 kg



## SAVEKING SHOCK ABSORBING SAFETY ROPE

Safety rope with an integral brake for controlled dissipation of fall energy, approved as a safety rope for use in the entertainment industry (BGV C1). When conventional wire ropes are used, high levels of linear momentum can result if secured equipment falls. SAVEKINGS wire ropes incorporate a loop with a brake clamp. In the event of a fall, the loop constricts, thus absorbing the high shock forces. A color marking on the brake clamp serves as an indicator that the rope is in good condition.

Art. No.	Up to	Thick.	Length	Weight
S33060SK	20 kg	3.0 mm	0.6 m	0.07 kg
S43060SK	40 kg	4.0 mm	0.6 m	0.13 kg
S43100SK	40 kg	4.0 mm	1.0 m	0.15 kg
SS5100SK	60 kg	5.0 mm	1.0 m	0.26 kg



## S82100 SAFETY ROPE 8 MM LENGTH 1 M

- 8 mm safety cable
- Length: 1.0 m
- Galvanised
- 6 x 19 + fibre core
- Eyelet at both ends
- Stamped: BGV C1 I.W 8 mm 295 kg
- Up to 100 kg device weight when using two safety cables
- Weight: 0.38 kg

**ATTENTION:** Chain link S93100 has to be ordered separately!



## S53102B

### SAFETY ROPE 5 MM WITH SCREW GATE CARABINER LENGTH 1 M BLACK

- 5 mm safety cable
- Length: 1.0 m
- Black galvanised
- 6 x 19 + fibre core
- Eyelet at both ends
- One end with unlosable Kettbiner (black galvanised, 90 x 8 mm)
- Stamped according to DIN 56926 (code number: BGV C1)
- Up to 45 kg device weight when using two safety cables
- Weight: 0.26 kg



## S42100

### SAFETY ROPE 4 MM LENGTH 1 M

- 4 mm safety cable
- Length: 1.0 m
- Galvanised
- 6 x 19 + fibre core
- Eyelet at both ends
- Up to 30 kg device weight when using two safety cables
- Weight: 0.08 kg

**ATTENTION:** Chain link S93061 has to be ordered separately



## S53100

### SAFETY ROPE 5 MM WITH SCREW GATE CARABINER LENGTH 1 M

- 5 mm safety cable
- Length: 1.0 m
- Galvanised
- 6 x 19 + fibre core
- Eyelet at both ends
- One end with unlosable Kettbiner (90 x 8, with screw connection)
- Stamped: BGV C1 200 kg IW
- Up to 45 kg device weight when using two safety cables
- Weight: 0.22 kg



## S63100

### SAFETY ROPE 6 MM WITH SCREW GATE CARABINER LENGTH 1 M

- 6 mm safety cable
- Length: 1.0 m
- Galvanised
- 6 x 19 + fibre core
- Eyelet at both ends
- One end with unlosable Kettbiner (90 x 8, with screw connection)
- Stamped: BGV C1 200 kg IW
- Up to 60 kg device weight when using two safety cables
- Weight: 0.29 kg



## S50500

### SAFETY ROPE 5 MM LENGTH 5 M FOR S50S WIRE CLIP FOR ROPES 4 - 5 MM

- 5 mm Safety Cable
- Length: 5.0 m
- Galvanised
- 6 x 19 + fibre core
- Tin-plated at one end with Eyelet at the other end
- Weight: 0.50 kg



## S80500

### SAFETY ROPE 8 MM LENGTH 5 M FOR S80VS WIRE CLIP FOR ROPES 6 - 8 MM

- 8 mm Safety Cable
- Length: 5.0 m
- Galvanised
- 6 x 19 + fibre core
- Tin-plated at one end with Eyelet at the other end
- Weight: 1.20 kg



# FLYWARE



## 572# CARGO RESTRAINT TRACK BLACK

Cargo restraint track for directional adjustment of flying P.A. systems.

- Fixing M6 x 40 countersunk
- Finish: Black anodised aluminum
- Loading: 1000 kg horizontally, 1700 kg vertically

Art. No.	Length	Weight
5720	15.0 cm	0.09 kg
5721	22.5 cm	0.14 kg



## 5740A DOUBLE STUD RING

Cargo restraint Twin stud & ring to suit 5720 and 5721 tracking

- Forged steel
- Finish: Zinc plated
- Breaking Strain: 2400 daN
- Weight: 0.17 kg



## 5725B FLYING PLATE, ALUMINUM LASHING POINT

- Direct tensile load-bearing capacity of up to 500 daN
- Maximum breaking strength of 1,000 daN
- For use in combination with our mounting lugs [5745](#)
- Weight: 0.02 kg



## 593061 SCREW LINK LONG

Chain Link for S42100.

- Galvanised
- 6 mm thick
- Stamped according to DIN 56926 (code number: 200)
- WLL: 350 kg
- Weight: 0.06 kg



## 5745 SINGLE STUD RING

Roping eye.

- Single cargo spring stud
- To clip into 5725, 5720, 5721
- Ring inside diameter: 29,5 mm
- Max Load Bearing: 300 daN
- Weight: 0.05 kg



## 593101 SCREW LINK LONG

Chain Link for S82100.

- Galvanised
- 10 mm thick
- Stamped according to DIN 56926 (code number: 200)
- WLL: 1000 kg
- Weight: 0.17 kg



## S50SV2 WIRE CABLE GLIDER FOR 4 - 5 MM CABLES WITH COUPLING RING

- Diameter: 25mm
- Total length: 87mm
- For wire cables with a diameter of: 4.0 and 5.0 mm
- Outside diameter of ring: 54mm
- Inside diameter of ring: 30mm
- Workload: 80 kg (cable diameter 4.0. mm) and 130 kg (cable diameter 5.0 mm)
- Other features: BG- and TÜV-certified
- Weight: 0.28 kg



## SH2B0325 SCHACKLE WITH BOLT, NUT AND SPLIT PIN

- Max. load: 3250 kg
- Nominal value: 5/8 "
- Material thickness: 16 mm
- Inner diameter: 51 mm
- Exterior diameter: 83 mm
- Weight: 0.70 kg

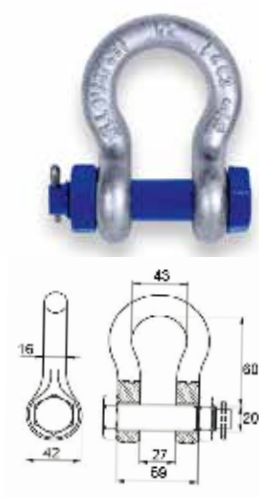


## SH20325 SCHACKLE WITH BOLT, NUT AND SPLIT PIN

High-strength tempered shackle, hot-dip galvanised, curved, with bolt, nut, and split pin.

- Max. load: 3250 kg
- Nominal value: 5/8 "

Weight: 0.66 kg



## SX01205 ROUND SLING WITH FABRIC INSERT 1.2 - 0.5 M

Black roundsling with fiber or wire rope inlay and lashings - Made in Germany. Our roundslings with fiber inlay are featuring a tubular coating made from extra dense polyester webbing with Pu-impregnation. The core consists of endlessly laid polyester yarn. In addition to the marking on the label, the working load can be learned from a colored seam. All roundslings are furnished with user's manual excerpts on an identification label, marked with utilization length and working load limit (WLL).

- Workload: 1.2 t
- Weight: 0.16 kg

# TRUSS STACKER

## 3810##

### EUROTRUSS ROLL BOARDS

The Truss Stacker roller board system combined with the 382100 stacker interface facilitates easy, effortless traverse stacking for safer transport. The birch ply roller boards are available in versions with 2 x 2, 3 and 4 rollers and are suitable for 3 and 4 point traverses.

- Universally suitable for use with 2 x 2, 3 and 4 point traverses
- Material: birch multiplex
- Material thickness: 18 mm
- Surface: honed
- Wheel diameter: 100 mm
- Manufacturer of castors: Adam Hall
- Length: 600 mm
- Suitable for: Eurotruss
- For truss with outer tube dimension: 288 - 291 mm



## 381022

### EUROTRUSS ROLL BOARD WITH 2 X 100 MM ROLLS

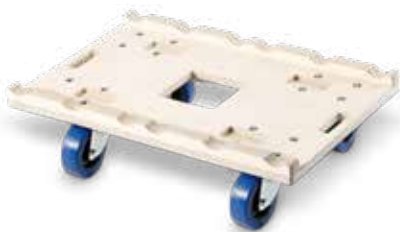
- Number of casters: 2
- thereof Braked: 1
- Weight: 4,7 kg



## 381033

### EUROTRUSS ROLLER BOARD WITH 3 X 100 MM ROLLS

- Number of casters: 3
- thereof Braked: 2
- Weight: 6 kg



## 381044

### EUROTRUSS ROLLER BOARD WITH 4 X 100 MM ROLLS

- Number of casters: 4
- thereof Braked: 2
- Weight: 7,4 kg

## 382100

### STACKER INTERFACE FOR EUROTRUSS ROLL BOARD

The Truss Stacker System enables easy and trouble-free stacking of trusses directly onto specially designed roller boards for safe transport with these 'Interface Stackers'. The corresponding roller boards are available in 2-roller, 3-roller and 4-roller versions and are universally usable for 2 x 2, 3 and 4 point trusses with an outer pipe dimension of 288 - 291 mm.

- Material: birch multiplex
- Material thickness: 30 mm
- Surface: honed
- Length: 600 mm
- Suitable for: Eurotruss
- For truss with outer tube dimension: 288 - 291 mm
- Weight: 0,46 kg



Design by  
**PORSCHE DESIGN  
STUDIO**

# Monumental Clarity



## **MAUI® P900**

### A GROUNDBREAKING VISION IN PRO AUDIO

Imagine a modern art audio system. Imagine a pure design, pristine sound clarity and monumental power. Creating the MAUI P900, we set out to combine state-of-the-art audio technology and sleek elegance into a loudspeaker system that breaks new ground. Merging inspired aesthetics with technical excellence, the MAUI P900 is a vision come true.



Expand your horizon at:  
[id-systems.com/mauiP900](https://www.id-systems.com/mauiP900)

DESIGNED & ENGINEERED IN GERMANY  
LD Systems® is a registered brand of the Adam Hall Group.



DESIGN  
AWARD  
2018



GERMAN  
DESIGN  
AWARD  
WINNER  
2018



reddot award  
2018  
winner

**LDsystems** LD  
free your sound



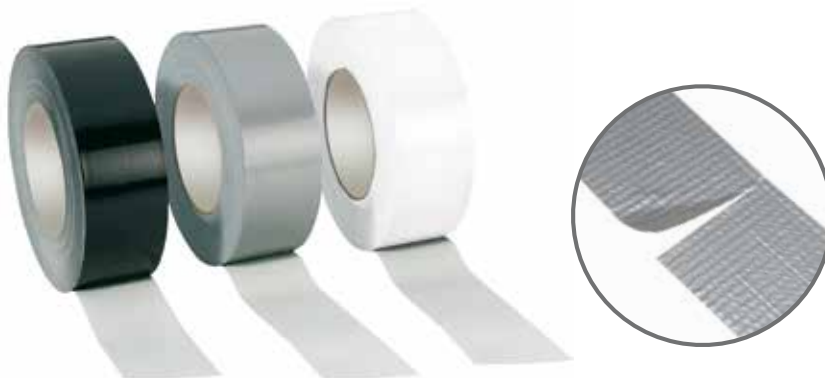
## **ADAM HALL STAGE TAPES - THE QUICK FIX**

Simply indispensable for stage techs and musicians, adhesive tapes provide quick and effective solutions when it comes to bundling and securing cables or marking equipment. Covering all needs the Adam Hall range of tapes includes the classic gaffer tape, waterproof duct tape, anti-slip and safety tapes, flame-retardant insulating tapes and many more in various widths.





# TAPES



## 58063### ADAM HALL PREMIUM GAFFER TAPE

Best quality, super sticky cloth backed adhesive tape 50 m x 50 mm.

- Rolls packed separately
- Weight: 0.45 kg

### Art. No. Color

58063BLK Black

58063S Silver

58063W White



## ADVANCE

## 5805### / 5807### GAFFA AT 200 / 202

Glossy - Best quality super sticky cloth backed adhesive tape, 50 mm x 50 m.

- Rolls packed separately
- Weight: 0.73 kg

### Art. No. Color

5805BLK Black

5805S Silver

5805W White

Matt - Non reflecting:

### Art. No. Color

5807BLK Black

5807S Silver

5807W White



## ADVANCE

## 58066### DUCT TAPE BLACK 50 MM X 50 M

- 50 m roll
- Very High Tack
- Easy tear
- Tight Unwind
- Abrasion Resistant
- Water Resistant
- Conformable
- Non-Corrosive Adhesive
- Weight: 0.62 kg

### Art. No. Color Width

58066BLK Black 50 mm

58066S Silver 50 mm

58066W White 50 mm

# TAPES



## 58062### DUCT BLACK 50 MM X 50 M

- 50 mm x 50 m roll
- Strongest PCL tape
- Easy unwind and easy tear
- Very high initial stick
- Gloss finish
- Single packed
- Weight: 0.65 kg

Art. No.	Color
----------	-------

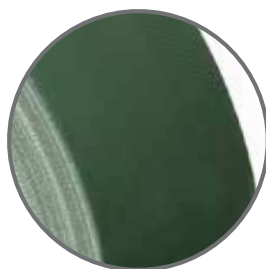
58062BLK	Black
----------	-------

58062S	Silver
--------	--------

58062W	White
--------	-------

## 58180ARMY WATERPROOF, BRONZE-GREEN PE-COATED TEXTILE TAPE

- Polyethylene-coated textile tape, coated with high-stick, pressure-sensitive adhesive
- Glossy finish
- Adapts to many different shapes.
- Strong
- Waterproof finish
- Good abrasion resistance
- Non-corrosive adhesive
- Strong immediate adhesion
- Removable without residue
- Can be written on
- Type: Textile tape
- Color: bronze-green
- Width: 50 mm
- Length: 50 m
- Weight: 0.26 kg



 ADVANCE

# TAPES



ADVANCE

## 5813 SELF-ADHESIVE MARKING TAPE

- Marking Tape for mixing consoles etc
- No glue residue
- Color: white
- 19 mm x 33 m roll
- Weight: 0.12 kg



ADVANCE

## 5803 SAFETY TAPE BLACK/YELLOW

Very high adhesion level - adheres well long term to rough surfaces. Low stretch - will not lift once applied. Good abrasion resistance - stands up well to foot and machinery traffic. Can be walked on immediately after application.

Regulation colors should be used for marking hazards.

- Width: 50 mm
- Length: 30 m
- Weight: 0.33 kg



## 58065N### GAFFER TAPE NEON

- Carrier: PE-coated cloth
- Length: 25 m
- Width: 38 mm
- Adhesive-base: rubber
- Temperature-resistance: - 35 °C up to + 80 °C
- Good weather-resistance
- Weight: 0.37 kg

### Art. No. Color

58065NGRN	Green
58065NPIN	Pink
58065NYEL	Yellow
58065NOR	Orange



ADVANCE

## 5808#### PVC INSULATING TAPE

PVC Electrical Insulation Tape. Conforms to BS EN 60454 Type 2. 19 mm x 33 m. Flame retardant and self extinguishing - safe to use on electrical cables. Wide range of colors - suitable for color coding.

- UV resistant
- Weight: 0.11 kg

### Art. No. Color

5808BLK	Black
5808GREY	Grey
5808W	White



## 58064N### GAFFER TAPE NEON

- Carrier: PE-coated cloth
- Length: 25 m
- Width: 19 mm
- Adhesive-base: rubber
- Temperature-resistance: - 35 °C up to + 80 °C
- Good weather-resistance
- Weight: 0.19 kg

### Art. No. Color

58064NGRN	Green
58064NPIN	Pink
58064NYEL	Yellow
58064NOR	Orange



## 580813### ADAM HALL INSULATING TAPE 0.13 X 19 MM X 20 M

- Flame retardant and self extinguishing
- Safe to use on electrical cables
- UV-resistant
- Length: 20 m
- Width: 9 mm
- Weight 0.07 kg

### Art. No. Color

580813BLK	Black
580813GREY	Grey



**580819BLK**  
**INSULATING TAPE**  
**0.19 X 19 MM X 20 M**

Highly elastic and soft over a wide temperature range. Frost resistant. Flame retardant and self extinguishing - safe to use on electrical cables. Resistant to weather, abrasion, moisture, acids, corrosion, UV and aging.

- Weight: 0.11 kg



**580813RNB10**  
**INSULATING TAPE SET**  
**0.13 X 19 MM X 20 M**

Flame retardant and self extinguishing - safe to use on electrical cables. Wide range of colors - suitable for color coding.

- UV-resistant
- Width: 15 mm
- Length: 10 m



**5807#####**  
**GAFFA 50M**

Best quality super sticky cloth backed adhesive tape. Gloss finish. Cable friendly adhesive peels clean from cables and most other surfaces. Very easy unwind and very easy tear. For joining and securing scenery in back stage areas where a gloss finish is preferred to give higher visibility in dark areas. Securing of cables and instrument leads.

- Weight: 0.69 kg

Art. No.	Color
5807BLK	Black
5807S	Silver
5807W	White



**58065###**  
**GAFFER TAPES 38 MM X 25 M**

- Type: Gaffa
- Color: blue
- Width: 38 mm
- Length: 25 m
- Weight: 0.38 kg

Art. No.	Color
58065BLK	Black
58065W	White



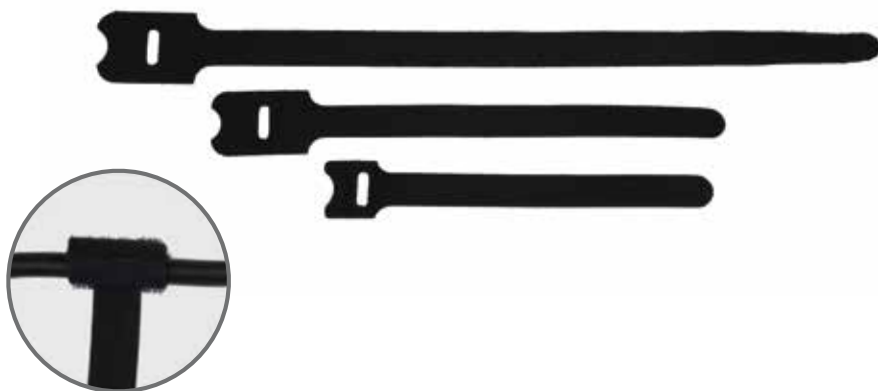
## ADAM HALL STAGE EQUIPMENT ACCESSORIES - THE DEVIL IS IN THE DETAILS

We stock a miscellaneous selection of accessory items that can make a big difference to your presentation. Use our spray adhesives for stage props and cabinet covers, finish loudspeaker enclosures with our texture paint and keep cords tidy and securely attached with our cable ties. We also supply industrial grade batteries to power wireless transmitters, DI boxes etc.



4:29 YY

# CABLE TIES & VELCRO



## VT2### CABLE TIES

Cheap, easy and fast way to tie cables.

**Art. No.**    **Size**

**VT2215**    22 / 12,5 x 150 mm

**VT2520**    25 / 12,5 x 200 mm

**VT2830**    28 / 14,0 x 306 mm



## VR#### CABLE TIES HOOK & LOOP

Black, with colored tongue. Available in black, blue, red, green and yellow.

**Art. No.**    **Size**

**VR1616\***    16 x 160 mm

**VR2020\***    20 x 200 mm

**VR2030\***    20 x 300 mm

**VR2530\***    25 x 300 mm

**VR4040\***    40 x 400 mm

**VR5050\***    50 x 500 mm

**VR5080\***    50 x 800 mm

\*BLK - Black

\*BLU - Blue

\*GRN - Green

\*RED - Red

\*YEL - Yellow



## VP##### VP CABLE TIES

In clear or black.

**Art. No.**    **Size**

**VP26135BLK**    26 x 135 mm

**VP36200(BLK)**    36 x 200 mm

**VP36290(BLK)**    36 x 290 mm

**VP48360(BLK)**    48 x 360 mm

# BATTERIES

## VIMN####

### VARTA BATTERIES INDUSTRIAL

Art. No.	Size	PU	Weight
VIMN2025	3 V Battery CR 2025	10 pcs.	0.01 kg
VIMN2032	3 V Battery CR 2032	10 pcs.	0.003 kg
VIMN4003	1.5V Micro AAA	10 pcs.	0.01 kg
VIMN4006	1.5V Mignon AA	40 pcs.	0.02 kg
VIMN4014	1.5V BABY C	20 pcs.	0.06 kg
VIMN4020	1.5V Mono D	20 pcs.	0.13 kg
VIMN4022	9 V Block	20 pcs.	0.05 kg



## VRAMN#####

### VARTA RECHARGEABLE ACCU

The unexcelled energy solution for demanding consumers: enjoy your device performances at their best. Unique: highest "Ready To Use" capacity for 9 V with 200 mAh. Very low self-discharge. Rechargeable without any memory effect.

Art. No.	Size	PU	Weight
VRAMN56722	9V Block	1 pcs.	0.04 kg
VRAMN5703	AAA	4 pcs.	0.05 kg
VRAMN5716	AA	4 pcs.	0.01 kg



# GLUE & PAINT



## 0131### TEXTURE PAINT 1 KG

Warnex texture paint is the impressive alternative to conventional textile and plastic surfaces! Whether coarse or fine grain finished, the range of sound from your loudspeaker cabinets remains unchanged. For optimal results use a Spray Gun with pressure cup.

- Semi matte
- Economical air drying
- Environmentally-friendly water thinning
- Easy application as a 1-component material

Art. No.	Color	Size
0131	Black	1 kg
0131WHI	White	1 kg
013112	Black	12 kg



## 01360 SPRAY ADHESIVE 500 ML CAN

The simple and fast adhesive from a spraycan for large-scale surfaces. It bonds many types of materials. Specially designed for long-lasting, extra strong bonding of rough and uneven surfaces such as paper, cardboard, felt, fabric, plasticizer-free plasticfoils, foams, padding, rigid foams with each other and itself; as well as onto wood, glass, metal, ceramics (ideal for making cases and boxes).

The amount of adhesive can be adjusted (high/medium/low) by a special valve. Depending on the material, an area of up to 4 m<sup>2</sup> can be bonded together.

- Temperature resistant from -20°C to +60°C
- Weight: 0.50 kg

# GLUE & PAINT



## **01362** SPRAY ADHESIVE 4 KG CONTAINER

The Spray adhesive is a universal contact adhesive for bonding upholstery foam on itself, on upholstery fabrics, leather, wood, hard fibre, paperboard, rubberized hair, fleece, polystyrene foam and other plasticizer free upholstery material. This contact adhesive applicable by spray characterised by a long contact life and good heat resistance. The adhesive produces an elastic and durable joint. Fits perfectly together with the Spray Air Gun. (Article No. 01362AG).

- Weight: 4.40 kg



## **013631L** SOLVENT FOR 01362 SPRAY ADHESIVE 1 L

Thinner for our Spray Adhesive 01362. Also to be used as a cleaner for your working utensils.

- Weight: 1.20 kg



## **58141** EZEWIPE GORILLA WIPES - CLEANING CLOTHS

Gorilla Wipes Cleaning cloths. 80 cloths/pack. Especially designed for the purpose, these cloths remove even the most troublesome adhesive residue.

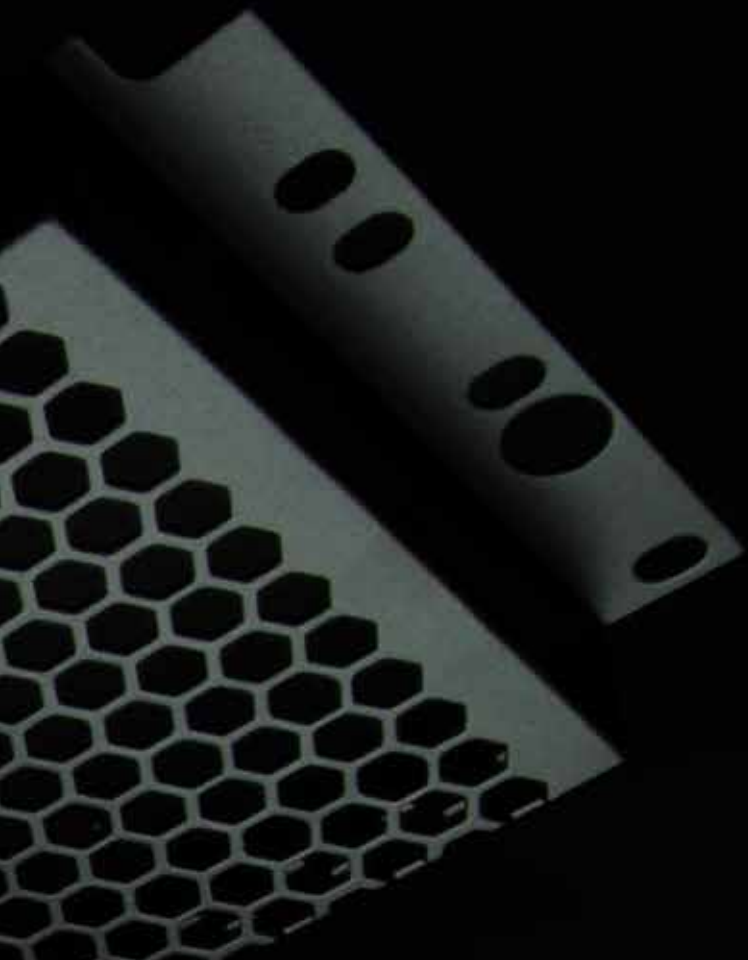
- Weight: 0.70 kg





## **ADAM HALL 19" RACK COMPONENTS** CONFIGURE YOUR CUSTOM RACK

Featuring cradles, drawers and trays the Adam Hall line of 19" components provides numerous options for custom rack configuration. Blanking panels, ventilation panels and pre-punched connector panels extend functionality and structural stability while our rack lights add illumination. Mounting is made easy with our selection of cage nuts, screws and washers.



# MOUNTING PARTS



**5927M8AH**  
BAG OF 8 M6 X 12 MM SCREW  
WITH CAGE NUT AND WASHER

▪ Weight: 0.07 kg



**5924M8AH**  
MOUNTING KIT FOR TWO 19"  
UNITS WITH HEX NUTS M6

▪ Weight: 0.07 kg



**5925M8AH**  
MOUNTING KIT FOR TWO 19"  
UNITS WITH SQUARE NUTS M6

▪ Weight: 0.065 kg



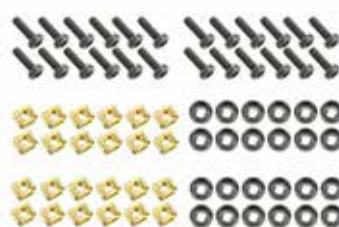
**5924M12AH**  
BAG OF 12 M6 X 12 MM SCREW  
WITH CAGE NUT AND WASHER

▪ Weight: 0.07 kg



**5929M12AH**  
4 X CROSS-HEAD SCREW  
M6 X 16 BLACK WITH  
SQUARE NUT M6 AND  
RECESSED WASHER IN BAG

▪ Weight: 0.07 kg



**5928M24AH**  
BAG OF 24 M6 X 20 MM SCREW  
WITH CAGE NUT AND WASHER

▪ Weight: 0.2 kg

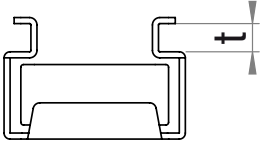


# MOUNTING PARTS



## 565# CAGENUTS M6

Art. No.	t
5650	3.5 mm
5651	1.5 mm
5652	3.0 mm
5653	2.0 mm



## 541# SCREWS

Art. No.	Type
5417(BLK)	M6 x 12
5410(BLK)	M6 x 16
5416(BLK)	M6 x 20
5414(BLK)	M6 x 40
5420BLK	M3 x 10 with nut



## 5620 CUPWASHER FOR M6 SCREW

- Recessed
- Black plastic
- External diameter: 15 mm
- Hole size: 6.8 mm
- Height: 4.1 mm



## 5621 FLAT WASHER FOR M6 SCREW

- Black plastic
- External diameter: 12 mm
- Internal diameter: 6.5 mm
- Thickness: 1.6 mm



## 566# RACK NUTS M6

Art. No.	Type
5666	Hexnut
5660	Square nut



## 5635 HUMFREES UNIVERSAL SYSTEM

### HUM & NOISE IN RACK SYSTEMS ...

Usual mounting of 19" equipment in a rack system results in contact between the devices through the rack rails. This creates ground loops – the most common cause of hum and noise.

The unique Humfrees mounting system interrupts these groundloops by isolating the 19" units from the rails and from each other. Scarring and scratching of the front panel by the mounting screws is also eliminated. Set for one unit.

- Weight: 0.03 kg





# be light years ahead

Explore a whole new universe of top modern lighting to electrify your audiences. The new powerful yet energy efficient Cameo OPUS® series of moving heads has landed. LED from outer space.



## OPUS® SP5

HIGH CLASS  
PROFILE MOVING HEAD  
500 W / 15.000 lm



## OPUS® SP5 FC

HIGH CLASS  
PROFILE MOVING HEAD  
300 W / 9.000 lm



## OPUS® S5

HIGH CLASS  
SPOT MOVING HEAD  
380 W / 17.500 lm

 **cameo**®

DESIGNED & ENGINEERED  
**IN GERMANY**

step into the future at:  
**cameolight.com/OPUS-SERIES**

Cameo®  
is a brand of  **adam hall** experience  
event technology

**SOUND**  
TECHNOLOGY

**LIGHT**  
TECHNOLOGY

**STAGE**  
EQUIPMENT

**HARDWARE**  
FOR FLIGHTCASES

share the experience at  
**adamhall.com**



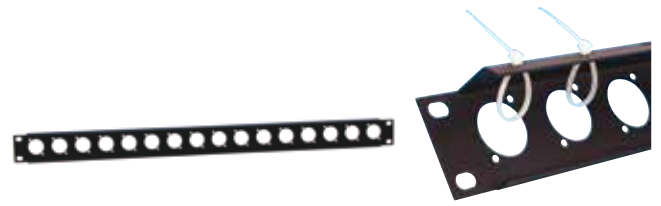
# 19" PANELS



**872215**  
**19" U-SHAPED RACK PANEL 12 SOCKETS 1U WITH TIE BAR**

1 U rack panel with punched holes for 12 universal „D“ type XLR sockets. Integrated tie bar including 12 cable ties.

- 1.5 mm steel, black powder coated
- Weight: 0.38 kg



**872225**  
**19" U-SHAPED RACK PANEL 16 SOCKETS 1U WITH TIE BAR**

1 U rack panel with punched holes for 16 universal „D“ type XLR sockets. Integrated tie bar including 16 cable ties.

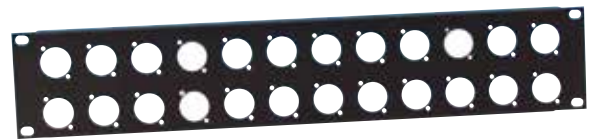
- 1.5 mm steel, black powder coated
- Weight: 0.38 kg



**872213**  
**19" U-SHAPED RACK PANEL 12 SOCKETS 1U**

1 U rack panel with punched holes for 12 universal „D“ type XLR sockets. 2 mm steel, black powder coated.

- Weight: 0.25 kg



**872214**  
**19" U-SHAPED RACK PANEL 24 SOCKETS 2U**

2 U rack panel with punched holes for 24 universal „D“ type XLR sockets. 2 mm steel, black powder coated.

- Weight: 0.40 kg



**872212**  
**19" U-SHAPED RACK PANEL UNIVERSAL 1U**

1 U rack panel with punched holes for 2 x female XLR, 6 x male XLR and 1 x IECC mains socket. Steel, black powder coated

- Weight: 0.28 kg



**872230**  
**19" ANGLED RACK PANEL FOR 8 X D-TYPE SOCKETS**

The mounting holes are fitted with M3 threads; the tilt angle is 30°. The front overhead surface is intended for labels - a magnetic labelling strip is included.

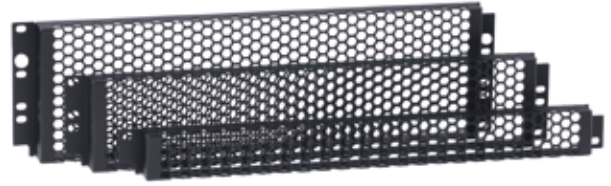
- Thickness: 2 mm
- Incl. magnetic labelling strip, 8 x cable ties

# 19" PANELS



## 7839 BLANKING PLATE

Universal XLR blanking plate for „D“-type cutouts, black plastic.



## 8744# 19" COVER WITH PUNCHED HOLE FRONT, COARSE

For protecting settings on effects units, etc. Black powder coated.  
▪ Inside depth 27 mm

Art. No.	U	Weight
87445	1	0.32 kg
87446	2	0.13 kg
87447	3	0.53 kg



## 8744# 19" COVER WITH PLEXIGLASS FRONT

For protecting settings on effects units, etc.  
▪ Inside depth 32 mm

Art. No.	U	Weight
87441	1	0.33 kg
87442	2	0.41 kg



## 87221V 19" U-SHAPED VENTILATION PANEL 1U WITH VERTICAL SLOTS

- 1 U, with vertical slots
- Ventilation area 30 cm<sup>2</sup>
- 1.5 mm Steel, black powder coated
- Weight: 0.29 kg



## 8721V 19" FLAT VENTILATION PANEL 1U WITH VERTICAL SLOTS

- 1 U, with vertical slots.
- Ventilation area 30 cm<sup>2</sup>
- 1.5 mm Steel, black powder coated
- Weight: 0.28 kg



## 8722#VH 19" U-SHAPED VENTILATION PANEL WITH HORIZONTAL SLOTS

- U-Shaped Ventilation Panel with horizontal slots
- 1.5 mm Steel, black powder coated

Art. No.	U	Ventilation area	Weight
87221VH	1	38 cm <sup>2</sup>	0.28 kg
87222VH	2	89 cm <sup>2</sup>	0.57 kg

# 19" PANELS



## 8722#VR 19" U-SHAPED VENTILATION PANEL WITH ROUND HOLES

- U-Shaped Ventilation Panel with round holes
- 1.5 mm Steel, black powder coated

Art. No.	U	Ventilation area	Weight
87221VR	1	88 cm <sup>2</sup>	0.25 kg
87222VR	2	210 cm <sup>2</sup>	0.36 kg
87223VR	3	320 cm <sup>2</sup>	0.47 kg



## 872# 19" FLAT RACK PANEL ALUMINUM

- 3 mm Aluminum or 1.5 mm Steel, black powder coated

Art. No.	U	Weight
8721(STL)	1	0.18 (0.34) kg
8722(STL)	2	0.36 (0.67) kg
8723(STL)	3	0.54 (1.04) kg
8724(STL)	4	0.72 (1.33) kg



## 8722# 19" U-SHAPED RACK PANEL ALUMINUM

- 2 mm aluminum or 1.5 mm steel, black powder coated

Art. No.	U	Weight
872205STL	1/2	0.17 kg
87221(STL)	1	0.20 (0.32) kg
87222(STL)	2	0.35 (0.58) kg
87223(STL)	3	0.40 (0.80) kg
87224(STL)	4	0.54 (1.06) kg

# CRADLES & HOUSINGS



## 875# 19" RACK CRADLE

For mounting of non 19" equipment. The extensive mounting hole pattern in the base greatly reduces the need for drilling.

- 1.5 mm Steel, black powder coated
- Depth: 250 mm

Art. No.	U	Weight
8754	1	2.00 kg
8755	2	4.00 kg



## 8756 19" RACK CRADLE

19" Rack Cradle for top mounting in open top rack. Supplied with self-adhesive Velcro to enable small mixers, effects, etc., to be mounted.

- 1.5 mm Steel, black powder coated.
- Depth: 38 cm
- Height: 2 U
- Weight: 0.80 kg



## 8755# 19" RACK CRADLE EXTRA DEEP

For mounting of non 19" equipment with a depth of up to 375 mm. Rear edge is folded up 10 mm for extra stability. Ventilation slots on both sides.

- 1.6 mm steel, black powder coated

Art. No.	U	Weight
87551	1	2.30 kg
87552	2	2.60 kg
87553	3	2.90 kg

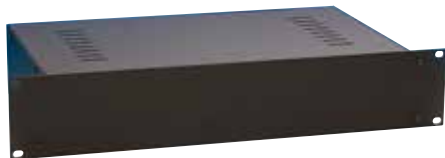


## 875# 19" RACK CLAMP

For mounting of non 19" equipment. With strong, adjustable clamping steel bars. 1.2 mm Steel, black powder coated.

- Depth: 300 mm

Art. No.	U	Weight
8757	1	2.58 kg
8758	2	2.89 kg
8759	3	3.20 kg

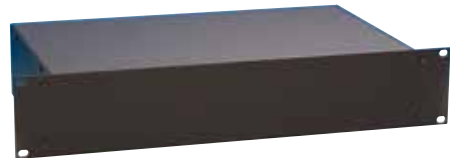


## 8740#V 19" HOUSING WITH VENTILATION SLOTS

With ventilation slots in top panel, 1.2 mm Steel. Front panel 3 mm Aluminum, black powder coated. Flat-packed with screws.

- Depth: 250 mm

Art. No.	U	Weight
87407V	1	2.25 kg
87408V	2	2.85 kg
87409V	3	3.45 kg



## 8740# 19" HOUSING

1.2 mm Steel. Front panel 3 mm Aluminum, black powder coated. Flat-packed with screws.

- Depth: 250 mm

Art. No.	U	Weight
87407	1	2.25 kg
87408	2	2.85 kg
87409	3	3.45 kg

# 19" DRAWERS



## 8740# LOCKABLE 19" RACKMOUNTING DRAWER MODULE

Lockable 19" rackmounting drawer module. Full extension ball race drawer slide. 1.2 mm steel, black powder coated. Incl. 2 keys. Also available in Aluminum.

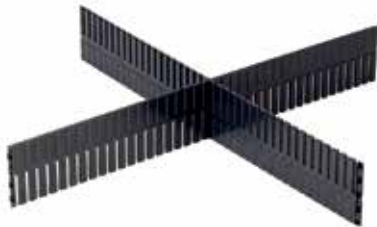
Art. No.	U	Depth Outer / Inner	Width Outer / Inner	Height Outer / Inner
87402(A)	1	392 / 383	434 / 401	90 / 74
87403(A)	2	392 / 383	434 / 401	135 / 125
87404(A)	3	392 / 383	434 / 401	180 / 175



## 8740#E 19" ECONOMY RACKMOUNTING DRAWER MODULE

19" economy rackmounting drawer module. 2/3 extension ball race drawer slides. 1.2 mm steel, black powder coated.

Art. No.	U	Depth Outer / Inner	Width Outer / Inner	Height Outer / Inner
87401E	1	390 / 382	436 / 405	44 / 37
87402E	2	392 / 377	436 / 405	90 / 75
87403E	3	392 / 377	436 / 405	135 / 115



## 87402T UNIVERSAL PARTITIONING FOR RACK DRAWERS

Universal Partitioning for Rack Drawers 2 U or higher, or any drawer (office, etc.) with a minimum internal height of 70 mm. Black Plastic, supplied in 50cm lengths with click joiners at each end.

Can be easily cut to the required length

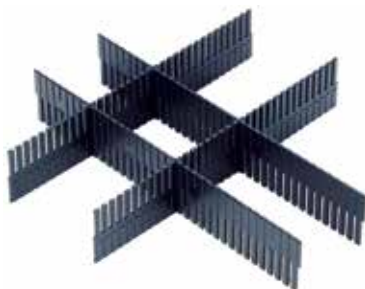
▪ Weight: 0.12 kg



## 87406 19" 6 U RACK DRAWER

Inner tray mounted on fully extendable ball race drawer slides. The drawer is removable. 2.0 mm Steel, black powder coated. Microphone insert not included.

▪ Weight: 13.95 kg



## 87402P# PARTITIONING FOR ADAM HALL RACK DRAWER

2 U or higher. P1 fits across the width of the drawer, P2 fits along the depth. Use as many as required to create further compartments.

Art. No.	Type	Weight
87402P1	For Width	0.10 kg
87402P2	For Length	0.10 kg



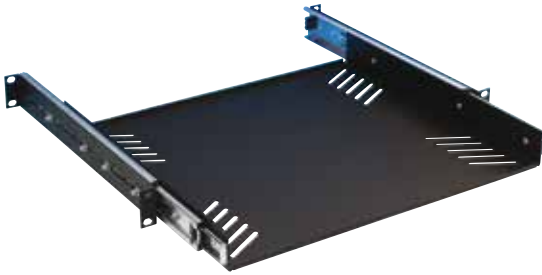
## 87406MI FOAM MICROPHONE INSERT

Foam microphone insert for use with 87406 drawer.

- Holds up to 25 microphones
- Cross Section Dimension: 56 mm
- Weight: 0.44 kg



# 19" DRAWERS



**87556**  
**19" RACKMOUNT PULL-OUT TRAY**

1 U, Drawer with slides mounted on both sides with. The rack brackets on the front and back are extendable, allowing the unit to be fitted with rear support to racks of varying depths.

- Usable surface 412 mm wide x 380 mm deep
- 1.6 mm steel, black powder coated
- Weight: 5.50 kg



Keyboard not included

**87412**  
**19" COMPUTER KEYBOARD TRAY**

2U, 19" rackmount for keyboards (tray dimensions 435 x 235 x 70 mm). Includes self adhesive strips to hold keyboard in position.

- Cable access at rear of tray
- Steel, black powder coated
- Depth: 360 mm
- Weight: 5.70 kg



**87555**  
**19" RACK-CRADLE**

2 U, with pull out shelf on drawer slides with a depth of 358 mm. 1.6 mm steel, black powder coated.

- Weight: 5.00 kg



Monitor not included

**87413**  
**19" RACK MOUNT PULL-OUT TRAY**

19" Rack mount pull-out tray with folding mounting bracket (VESA 75 mm and 100 mm) for computer screens with a maximum width 435 mm. Velcro straps hold screen securely in place during transport.

- Steel, black powder coated
- Weight: 9.00 kg



**8730#**  
**19" RACKBOX**

Steel, black powder coated with black plastic latch. Lid opens downwards.

- Depth 200 mm

Art. No.	U	Weight
87302	2	4.25 kg
87303	3	5.05kg



**87INLAY**  
**INLAY - NONSLIP DRAWER LINER**

- Prevents sliding and scratching
- For rack drawers, shelves etc.
- Dimensions: 400 x 370 mm
- Perfect for all Adam Hall rack drawers (item nos. 87402, 87402 A, 87403, 87403 A, 87404, 87404 A, 87401E, 87402E, 87403E)
- Weight: 0.75 kg

# MISCELLANEOUS



## 87475 19" HOUSING FOR FUSE SWITCHES

3 U, two part, steel black powder coated

- Weight: 1.20 kg
- Cutout: 430 x 46 mm

**87475A** Rear protection box (not depicted above)



## 8722#BRUSH 19" FRONT COVER BRUSH STRIP

To pass through connectors and cables.

Art. No.	U	Opening	Weight
<b>87221BRUSH</b>	1	400 x 21 mm	0.31 kg
<b>87222BRUSH</b>	2	400 x 56 mm	0.43 kg



(Cables not included)

## SCS19 WALL MOUNT CABLE HOLDER

- Steel material
- 2 mm thickness
- 19 cut outs for cables with diameter from 4 mm - 11 mm
- Dimensions (W x D x H): 318 x 65 x 55 mm



## 87530 HEADPHONE BRACKET

Mounts over 2 units rack height, swivels flat against rack for transport or can be removed entirely. Also useful for patch cords, etc.

- Steel, black powder coated with soft PVC covering
- Arm length: 140 mm
- Weight: 0.16 kg

# RACK LIGHTS



## **87463ULTRAC** **DUAL GOOSENECK RGB AND** **WHITE COB LED RACK LIGHT**

The 87463 Ultra C is a single space rack light with selectable colors and selection memory. The dual gooseneck lamps are equipped with COB LEDs providing red, green or blue plus cold or warm white illumination and flexible positioning. The 87463 Ultra C is designed for both front or rear mounting and comes with a 12 volt DC power adapter.

- Weight: 0.41 kg



## **87463ULTRA** **GOOSENECK COLD WHITE COB** **LED RACK LIGHT**

The 87463 Ultra is a single space dimmable rack light with level memory. The dual gooseneck lamps are equipped with cold white COB LEDs providing 3 levels of illumination and flexible positioning. The 87463 Ultra is designed for both front or rear mounting and comes with a 12 volt DC power adapter.

- Weight: 0.41 kg



## **87463** **LED GOOSENECK RACKLIGHT -** **2 GOOSENECKS**

- 9" 1 U Dual Gooseneck LED Rack Light
- Dimmer control
- Blue / white switchable
- 4 white and 2 blue LEDs
- Miniature external power supply (12 V)
- Weight: 0.89 kg

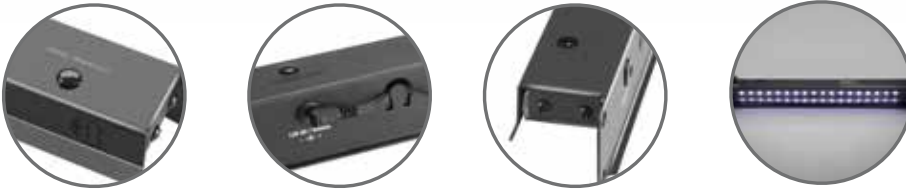
# RACK LIGHTS



## 87451PRO LED ARRAY RACK LIGHT WHITE 1 U

This rack light meets the highest professional standards! Equipped with 18 ultra bright LEDs, arranged in an array, this rack light ensures a uniform light distribution over the entire width of the rack. Switching on and off is done via "push-and-hold" on a button. Also, 3 brightness levels can be adjusted with the same button.

- Weight: 0.98 kg



## 87451PROC LED ARRAY RACK LIGHT MULTI- COLOR 1 U

This rack light meets the highest professional standards! Equipped with 18 ultra bright LEDs, arranged in an array, this rack light ensures a uniform light distribution over the entire width of the rack. Switching on and off is done via "push-and-hold" on a button. Also, 3 brightness levels can be adjusted with the same button.

- Weight: 0.98 kg



## 87451SMART 19\"/>

This rack light with patented Smart Motion Sensor Technology features a strip of 18 ultra-bright white LEDs to deliver consistent illumination across the entire rack width. It is switched on by pressing and holding the power button; a motion sensor activates the LEDs.

- Weight: 0.98 kg



## 87451SMARTC 19\"/>

This rack light with patented Smart Motion Sensor Technology features a strip of 18 ultra-bright LEDs to deliver consistent illumination across the entire rack width. It is switched on by pressing and holding the power button; a motion sensor activates the LEDs.

- Weight: 0.98 kg



# RACK LIGHTS



## SLED1ULTRA### GOOSENECK LIGHT

The SLED 1 ULTRA is a matt black gooseneck light with 4 extra bright white COB LEDs and 3-pin male XLR plug that works on dedicated 12 volt to 48 volt DC. The 300 mm gooseneck is easily flexible yet stays put where you bend it, the power switch is conveniently located on top of the lamp.

Model name:	SLED1ULTRABNC	SLED1ULTRAUSB	SLED1ULTRAXLR3	SLED1ULTRAXLR3A	SLED1ULTRAXLR4	SLED1ULTRAXLR4A
Product type:	Gooseneck Lamp	Gooseneck Lamp	Gooseneck Lamp	Gooseneck Lamp	Gooseneck Lamp	Gooseneck Lamp
Number of LEDs	4	4	4	4	4	4
Color of LEDs	white	white	white	white	white	white
Gooseneck length	300 mm	300 mm	300 mm	400 mm	300 mm	400 mm
Switches	yes	yes	yes	yes	yes	yes
Color temperature	6000 to 6500 K	6000 to 6500 K	6000 to 6500 K	6000 to 6500K	6000 to 6500 K	6000 to 6500K
Power Supply	via BNC connector	via USB connector	via 3-pin XLR connector	via angled 3-pin XLR connector	via 4-pin XLR connector	via angled 4-pin XLR connector
Weight	0.08 kg	0.08 kg	0.08 kg	0.09 kg	0.08 kg	0.09 kg
Additional information	4 extra bright COB LEDs	4 extra bright COB LEDs	4 extra bright COB LEDs	4 extra bright COB LEDs	4 extra bright COB LEDs	4 extra bright COB LEDs



# RACK LIGHTS



## SLED1ULTRA### GOOSENECK LIGHT

The SLED 1 ULTRA C is a matt black gooseneck light with 4 extra bright white COB LEDs with selectable color. The 300 mm gooseneck is easily flexible yet stays put where you bend it, the color is conveniently adjustable in warm white, cold white, red, green and blue.

Model name:	SLED1ULTRAUSBC	SLED1ULTRABNCC	SLED1ULTRAXLR3C	SLED1ULTRAXLR3AC	SLED1ULTRAXLR4C	SLED1ULTRAXLR4AC
Product type:	Gooseneck Lamp	Gooseneck Lamp	Gooseneck Lamp	Gooseneck Lamp	Gooseneck Lamp	Gooseneck Lamp
Number of LEDs	4	4	4	4	4	4
Color of LEDs	blue , cold white , green , red , warm white	blue , cold white , green , red , warm white	blue , cold white , green , red , warm white	white blue , cold white , green , red , warm white	blue , cold white , green , red , warm white	blue , cold white , green , red , warm white
Gooseneck length	300 mm	300 mm	300 mm	400 mm	300 mm	400 mm
Switches	yes	yes	yes	yes	yes	yes
Power Supply	via BNC connector	via USB connector	via 3-pin XLR connector	via angled 3-pin XLR connector	via 4-pin XLR connector	via angled 4-pin XLR connector
Weight	0.11kg	0.08 kg	0.08 kg	0.09 kg	0.08 kg	0.09 kg
Additional information	4 extra bright COB LEDs, Selectable colors	4 extra bright COB LEDs, Selectable colors	4 extra bright COB LEDs, Selectable colors	4 extra bright COB LEDs, Selectable colors	4 extra bright COB LEDs, Selectable colors	4 extra bright COB LEDs, Selectable colors

# RACK LIGHTS



## **SLED1BXL3** SURFACE MOUNT 3-PIN XLR GOOSENECK LIGHT BASE WITH POWER ADAPTER

Made of hard-wearing black plastic with a steel mounting plate the SLED 1 B XLR 3 is a gooseneck light base for lamps with a 3-pin male XLR connector. Pins 1 and 3 are wired to ground, pin 2 supplies +12 volts. The base comes with a 500mA 12 volt DC power adapter.

- Weight: 0.12 kg



## **SLED1BULTRA** GOOSENECK LIGHT WITH SUR- FACE MOUNT BASE

Featuring 4 extra bright white COB LEDs, a color temperature of 6,500 K and convenient power switch the SLED 1 B ULTRA is a 30 cm gooseneck light with rugged surface mount base of black plastic and steel. The lamp includes a 500mA 12 volt DC power adapter.

# REGISTER

Article no.	Page	Article no.	Page	Article no.	Page	Article no.	Page
131	80	382100	68	015850B	39	85307R	34
1360	80	872212	87	0158X34B	39	859##	45
1362	81	872213	87	0158X34W	39	85900B	45
5620	85	872214	87	0158X35B	39	85BOX	35
5621	85	872215	87	0158X35W	39	8721(STL)	89
5635	85	872225	87	0158X36B	39	8721V	88
5650	85	872230	87	0158X36W	39	8722(STL)	89
5651	85	874714	57	0158X45B	39	872205STL	89
5652	85	874716	52	0158X45W	39	87221(STL)	89
5653	85	608154490	63	0158X46B	39	87221BRUSH	93
5660	85	608154495	63	0158X46W	39	87221V	88
5666	85	0131WHI	80	0158X56B	39	87221VH	88
5720	66	013631L	81	0158X56W	39	87221VR	89
5721	66	0150 / 150WH	42	0160 B / 0160 WH	42	87222(STL)	89
5745	66	0151B / 0151WH	42	0160X33 / 0160X33WH	44	87222BRUSH	93
5803	74	0151X33 / 0151X33WH	43	0160X43 / 0160X43WH	44	87222VH	88
5810	45	0151X34 / 0151X34WH	43	0160X53 / 0160X53WH	44	87222VR	89
5811	45	0151X35 / 0151X35WH	43	5410(BLK)	85	87223(STL)	89
5813	74	0151X36 / 0151X36WH	43	5414(BLK)	85	87223VR	89
5815	45	0151X43 / 0151X43WH	43	5416(BLK)	85	87224(STL)	89
5816	45	0151X53 / 0151X53WH	43	5417(BLK)	85	8723(STL)	89
5817	45	0151X63 / 0151X63WH	43	5420BLK	85	8724(STL)	89
7839	88	0151X64 / 0151X64WH	43	5725B	66	87401E	91
8754	90	0151X66 / 0151X66WH	43	5740A	66	87402(A)	91
8755	90	0152X33 / 0152X33WH	43	58##	45	87402E	91
8756	90	0152X36 / 0152X36WH	43	58##	45	87402P1	91
8757	90	0152X43 / 0152X43WH	43	5805BLK	72	87402P2	91
8758	90	0152X53 / 0152X53WH	43	5805S	72	87402T	91
8759	90	0152X63 / 0152X63WH	43	5805W	72	87403(A)	91
13112	80	0152X64 / 0152X64WH	43	58062BLK	73	87403E	91
58141	81	0152X93 / 0152X93WH	43	58062S	73	87404(A)	91
85002	27	0152X96 / 0152X96WH	43	58062W	73	87406MI	91
85004	27	0153X##	18	58063BLK	72	87407V	90
85008	27	0153X204	18	58063S	72	87408V	90
85009	27	0153X206	18	58063W	72	87409V	90
85100	32	0153X208	18	58064NGRN	74	87451PRO	95
85103	32	0153X210	18	58064NOR	74	87451PROC	95
85150	31	0153X211	18	58064NPIN	74	87451SMART	95
85200	30	0155100B	39	58064NYEL	74	87451SMARTC	95
85300	28	0155100W	39	58065BLK	75	87463ULTRA	94
85301	29	0155X34B	39	58065NGRN	74	87463ULTRAC	94
85306	34	0155X34W	39	58065NOR	74	87470USB	56
85308	28	0155X35B	39	58065NPIN	74	87471IEC	55
85308	29	0155X35W	39	58065NYEL	74	87471T	54
85310	28	0155X36B	39	58065W	75	87471USB	55
85500	26	0155X36W	39	58066BLK	72	8747IP3	57
85510	26	0155X45B	39	58066S	72	8747IP5	57
85600	24	0155X45W	39	58066W	72	8747S3	58
85601	25	0155X46B	39	5807BLK	72	8747S3USB	58
85970	45	0155X46W	39	5807BLK	75	8747S6	58
87302	92	0155X56B	39	5807S	72	8747X3	59
87303	92	0155X56W	39	5807S	75	87INLAY	92
87406	91	0156100B	39	5807W	72	AHPPROPORT4	52
87407	90	0156100W	39	5807W	75	AHPPROPORT4CEE	54
87408	90	0156X34B	39	580813BLK	74	AHPPROPORT4T	53
87409	90	0156X34W	39	580813GREY	74	AHPPROPORT4TT	53
87412	92	0156X35B	39	580813RNB10	75	AHPPROPORT6T	53
87413	92	0156X35W	39	580819BLK	75	B3000101	11
87441	88	0156X36B	39	5808BLK	74	B3000102	12
87442	88	0156X36W	39	5808GREY	74	B3000104	12
87445	88	0156X45B	39	5808W	74	B3000110	13
87446	88	0156X45W	39	58180ARMY	73	B3000120	13
87447	88	0156X46B	39	5924M12AH	84	B3000123	13
87463	94	0156X46W	39	5924M8AH	84	B3000201	11
87470	56	0156X56B	39	5925M8AH	84	B3000202	12
87471	54	0156X56W	39	5927M8AH	84	B3000204	12
87472	51	0157100B	39	5928M24AH	84	B3000210	13
87473	51	0157100W	39	5929M12AH	84	B3000220	13
87475	93	0157X34B	39	85158F	31	B3000223	13
87476	52	0157X34W	39	85158M	31	B3010101	8
87478	55	0157X35B	39	85160/85160GREY/85160YEL	33	B3010102	9
87480	50	0157X35W	39	85161GREY	33	B3010104	9
87530	93	0157X36B	39	85168GREY	33	B3010110	10
87551	90	0157X36W	39	85208F	30	B3010120	10
87552	90	0157X45B	39	85208M	30	B3010123	10
87553	90	0157X45W	39	85210L	30	B3010201	8
87555	92	0157X46B	39	85210R	30	B3010202	9
87556	92	0157X46W	39	8530#####	34	B3010204	9
381022	68	0157X56B	39	85300BLUE	34	B3010210	10
381033	68	0157X56W	39	85305SET	34	B3010220	10
381044	68	0158100B	39	85307L	34	B3010223	10

# REGISTER

Article no.	Page	Article no.	Page
B4050020	17	S93061	66
B4050040	17	S93101	66
B4050060	17	SCS19	93
B4050080	17	SLED1BULTRA	98
B4050100	17	SLED1BXHR3	98
B4050120	17	SLED1ULTRABNC	96
B4050140	17	SLED1ULTRABNCC	97
B4050160	17	SLED1ULTRAUSB	96
B4550040	17	SLED1ULTRAUSBC	97
B4550060	17	SLED1ULTRAXLR3	96
B4550080	17	SLED1ULTRAXLR3A	96
B4550100	17	SLED1ULTRAXLR3AC	97
B4550120	17	SLED1ULTRAXLR3C	97
B4700-001	18	SLED1ULTRAXLR4	96
B4700-002	18	SLED1ULTRAXLR4A	96
B4700006	17	SLED1ULTRAXLR4AC	97
B4700007	17	SLED1ULTRAXLR4C	97
B4700008	17	SX01205	67
B4700009	17	VBC4250BLK	46
B4700012	17	VBC4250BLK	46
B4700013	17	VBC4250WHI	46
B4700014	17	VBC4250WHI	46
B4700015	17	VBC5250BLK	46
B4700041	17	VBC5250WHI	46
B4700067	17	VIMN2025	79
B500###	14	VIMN2032	79
B500###	14	VIMN4003	79
B5000Z0##	16	VIMN4006	79
B5000Z003	16	VIMN4014	79
B5000Z005	16	VIMN4020	79
B5000Z015	16	VIMN4022	79
B5000Z016	16	VMIDCBLK	46
B5000Z018	16	VMIDCWHI	46
B500111003020	14	VMINCBLK	46
B500121003020	14	VMINCBLK	46
B500211003020	14	VMINCWHI	46
B500221003020	14	VMINCWHI	46
B500311003020	14	VP26135BLK	78
B500321003020	14	VP36200(BLK)	78
B500411003020	14	VP36290(BLK)	78
B500421003020	14	VP48360(BLK)	78
B500511003020	14	VR1616*	78
B500521003020	14	VR2020*	78
B500611003020	14	VR2030*	78
B500621003020	14	VR2530*	78
B500711003020	14	VR4040*	78
B500721003020	14	VR5050*	78
B510###	15	VR5080*	78
B510111003020	15	VRAMN56722	79
B510211003020	15	VRAMN5703	79
B510311003020	15	VRAMN5716	79
B510411003020	15	VT2215	78
B510511003020	15	VT2520	78
B510611003020	15	VT2830	78
B510711003020	15		
B5300100100	16		
B5300100200	16		
B5400	18		
B5410	18		
B5437	18		
B5450	18		
RIG400200685	62		
RIG400201100	62		
RIG400201101	62		
RIG400201105	62		
S33060SK	64		
S37060	64		
S37062B	64		
S42100	65		
S43060SK	64		
S43100SK	64		
S45062B	64		
S45100	64		
S50500	65		
S50SV2	66		
S53100	65		
S53102B	65		
S55100SK	64		
S63100	65		
S80500	65		
S82100	64		







[adamhall.com](http://adamhall.com)

EDITION 2019 / 2020

The information and numerical data contained in this publication has been prepared as a general guide to the products, potential buyers and users must however satisfy themselves as to the suitability and the applicability of the products for their particular purposes and duties. No responsibility is assumed for any errors herein. The company reserves the right to alter the designs, materials and specifications of the products shown in this publication without notice.

Adam Hall Group · Adam-Hall-Str.1 · 61267 Neu-Anspach · Germany · [adamhall.com](http://adamhall.com)

