

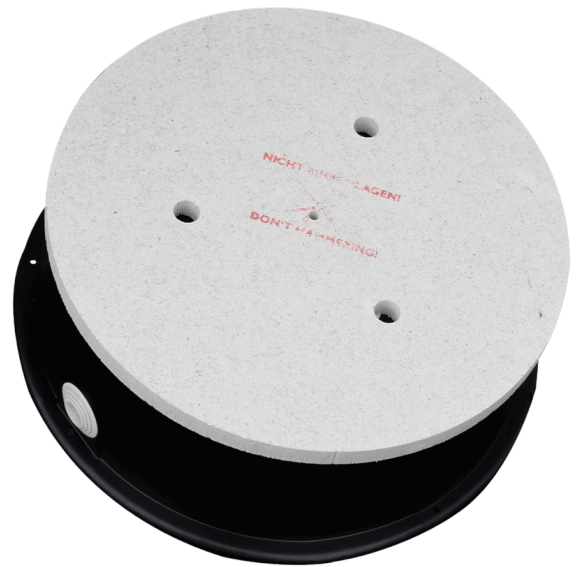


CMM306

Speaker built-in box for concrete casting with mineral fibreboard

The CMM306 is a built-in housing for flush mount installation of loudspeakers in concrete structures. The construction with mineral fiberboard plate allows customized cut-outs in various diameters or shapes for installation of loudspeakers (or lighting fixtures). Cast in-place or integration in precast factories is both possible.

The mineral fiberboard plate allows cutouts with diameters up to ~ 280 mm, while a maximum built-in depth of 110 mm guarantees compatibility with a large number of in-ceiling loudspeakers. The synthetic enclosure is made out of halogen free and fire (up to 650°C) resistant materials. Entries for both 2xM20 and 2xM25 cables are provided.



Product Features:

Cut-out measurement	280 mm (Ø)
Dimensions	306 x 120 mm (Ø x D)
Built-in depth	110 mm
Construction	Mineral fiberboard (Material front)
	Synthetic - Halogen free & temperature resistant (Material box)
	Galvanized metal plate - Grounded (Material cover)