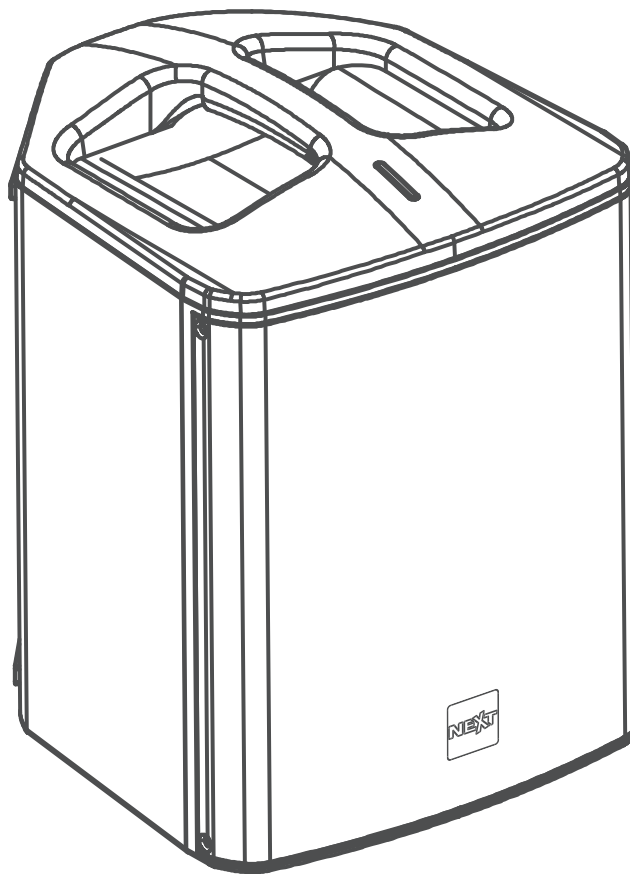


MAVERICK

MV10



USER MANUAL



THIS PAGE INTENTIONALLY LEFT BLANK

INTRODUCTION

INTRODUCTION	-1-
UNPACKING	-1-
MAVERICK SERIES OVERVIEW	-1-

SAFETY

SAFETY FIRST	-2-
--------------	-----

GETTING STARTED

PACKAGING CONTENTS	-3-
MULTI-POSITION FEATURE	-3-
POWER AMPLIFIER	-3-
TONE OPTIMIZER	-4-
BATTERY LEVEL INDICATOR	-4-
BLUETOOTH AUDIO REPRODUCTION	-4-

APPLICATIONS

MV10 + USB + MIC + GUITAR	-5-
MV10 + STEREO MIXER	-5-
MV10 MONITOR + MV10 30° LEAN BACK	-5-

SERVICE

REMOTE CONTROL	-6-
TROUBLESHOOTING	-6-
BATTERY REPLACEMENT	-6-

TECHNICAL

WARRANTY POLICY	-7-
END-OF-LIFE	-7-
SIMPLIFIED EU DECLARATION OF CONFORMITY	-7-
DIMENSIONS	-8-
TECHNICAL SPECIFICATIONS	-8-

INTRODUCTION

Thank you for purchasing a NEXT Audiocom MAVERICK Series speaker. This manual will provide you with useful and important information about your active portable series element. Please devote some time reading this manual, and keep it at hand for future reference. NEXT Audiocom is concerned with your safety and well-being, so please follow all instructions and heed all warnings. Also, a better understanding of some specific features of the speaker will help you to operate it to its full potential. With a continuous evolution of techniques and standards, NEXT Audiocom, reserves the right to change the specifications of its products without early warning. For the most current data, please visit our website: www.nextaudiocom.com

UNPACKING

NEXT Audiocom's MAVERICK Series are built under quality supervision of NEXT Audiocom, according to the highest standards. When unpacking your element, carefully examine it for any signs of possible transit damage and inform your dealer immediately if any such damage has occurred.

It is suggested that you retain the original packaging so that the cabinet can be repacked in the future if necessary. Please note that NEXT Audiocom and its authorized distributors cannot accept any responsibility for damage to any returned product through the use of non-approved packaging.

MAVERICK SERIES OVERVIEW

NEXT Audiocom engineered the MAVERICK series, a portable loudspeaker series offering the best performance and reliability in their class. Combining an ultra compact size, user friendly operation and a great design makes this series a great solution for musicians, DJs, basic installation and portable multi-purpose sound at a limited budget.

Maverick series aims to enhance usability and versatility combining efficiency to a professional sound performance, featuring high quality Bluetooth audio streaming, for background music or musical accompaniment, impressive SPL and an advanced DSP. A surprisingly simple handling concept lets you plug in and play straight-away. Configure the system by selecting the appropriate Preset (MV12) or Tone Optimizer (MV6 and MV10) and let the system do the rest.

Thanks to the lightweight, and a very compact size, ABS plastic cabinet, it's easy to carry and take just about anywhere. This series comprises three different models, MV6 (6,5"), MV10 (10") and MV12 (12").

The Maverick MV6 and MV10 are a all-in-one Battery-Powered Portable PA with Bluetooth connection, USB MP3 Player, AUX IN, MIC IN and instrument input. It comes with a remote control allowing the user to control it at distance. The rechargeable lithium-ion battery keeps you going for up to 12 hours on MV6 and 8 hours on the MV10. The multi-position feature allows the user to use it in several different ways: floor standing, floor tilted, stage monitor and pole mounted.

The Maverick MV12 is a 2-way active speaker with Bluetooth connection, AUX IN, CD PLAYER IN, MIC IN and instrument input. The powerful built-in DSP disposes 5 Presets that successfully adapt the speaker for the most distinct and demanding applications (Live performance, Music Reproduction, Speech or Stage Monitor). It is also possible to extend the system's frequency range adding an external subwoofer and changing the preset accordingly. Thanks to the multi-position feature, both MV6 and MV10 can cover many different applications.

SAFETY FIRST

It is important that the speaker systems are used in a safe manner. Please take some time to review the following point concerning safe use of your NEXT Audiocom's MAVERICK speaker.

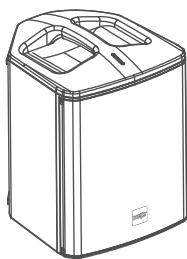
- Read these instructions.
- Keep these instructions.
- Heed all warnings.
- Follow all instructions.
- Do not use your speaker near any sources of water, like swimming pools, lakes, water streams, exposed to rain, high humidity environments or any other source of water or moisture.
- Use only a soft dry cloth to clean your speaker.
- Never use your speaker too close to any heat source, such as radiators, or any other device that produces heat. Recommended temperature: 0°C to +35°C.
- Never place your speaker in a way that prevents air flow near the amplifier. A minimum clearance distance of 20cm should be kept between the amplifier and any near surface.
- When pole mounted, always ensure that the floor or structure where the stack will take place is even and can withstand the weight.
- Do not suspend the speaker by its handles. The handles are intended to only be used for temporary transport by people.
- Place cables in a way that they do not present a trip hazard.
- Do not place any objects on top of the speaker, they can fall accidentally and cause injuries.
- Do not attempt to move the speaker while connected.
- It is advised to unplug the speaker during storms or when not in use for a long period of time.
- Do not attempt to service the speaker beyond what is described in this manual. All other service or repair of this product should be carried only by qualified personnel.
- To prevent electric shock, do not use any extension cord, receptacle or other outlets where the blades of the connectors cannot be fully inserted.
- Do not operate the unit for an extended period of time with the sound distorting.
- Do not operate the unit with the "PEAK" led consistently on.

PACKAGING CONTENTS

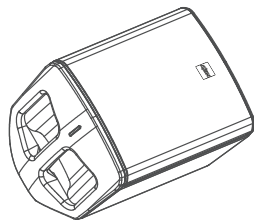
- 1 x Maverick MV10
- 1 x IEC C13 Power Cable
- 1 x Remote Control
- 1 x User's Guide

MULTI-POSITION FEATURE

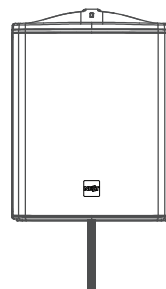
Thanks to the multi-position feature, the MV10 can be used in several different applications.



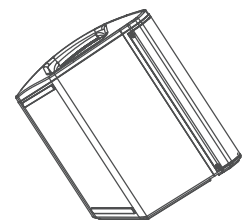
Floor Standing



Stage Monitor



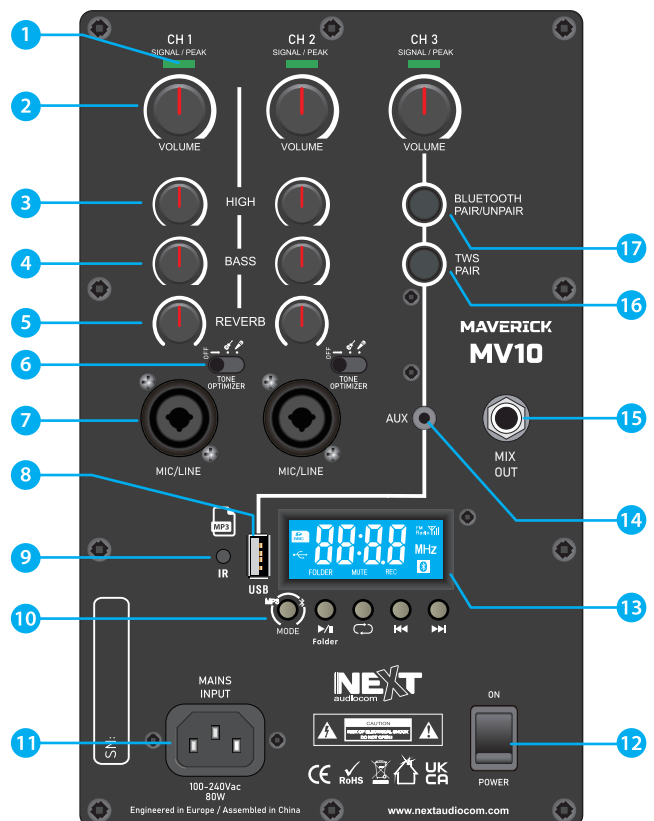
Pole / Tripod Mount
with **AUTO EQ**



30° Lean Back

POWER AMPLIFIER

- 1 - Input Signal / Peak LED
Green - Signal / Red - Peak
- 2 - Input Channel Level
- 3 - High EQ Level
- 4 - Bass EQ Level
- 5 - Reverb Effect Level
- 6 - Tone Optimizer
EQ optimization for Voice (microphone icon) or Instrument (guitar icon) or "OFF" for general music reproduction
- 7 - XLR / TRS 1/4" Combo Inputs
- 8 - USB Input
Can be used as a 5V 1A charger
- 9 - Remote Control IR Receiver
- 10 - Function Buttons
Mode: Switch between USB - Bluetooth / AUX has priority
Play/Pause: Click to Pause / Press 1-2 sec. to select USB folder
Playback Mode: Switch among RANDOM, ALL and SINGLE
Next: Skip track / Move to the next folder
Previous: Previous track / Move to the previous folder
- 11 - Mains Power Input - IEC C13 connector
- 12 - Power On/Off Switch
- 13 - LCD Display
- 14 - AUX Input - 3.5mm audio jack
- 15 - Mix Output - TRS 6.35mm
The output is post mix i.e. the EQ and Reverb are included
- 16 - TWS Pair/Unpair Button
- 17 - Bluetooth Pair/Unpair Button



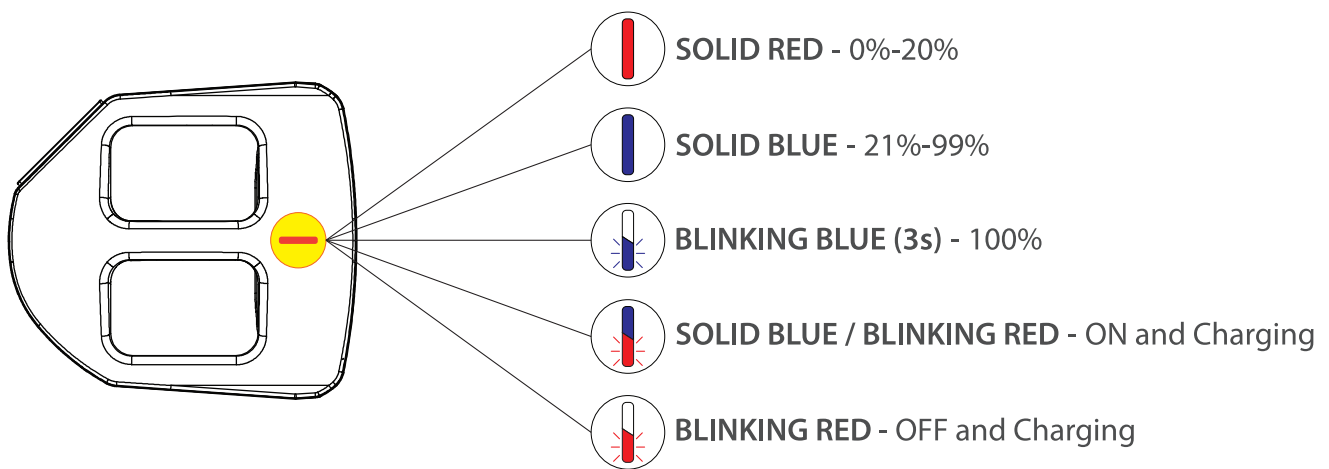
TONE OPTIMIZER

MICROPHONE - Automatic Input EQ for the best voice reproduction.

INSTRUMENT - Automatic Input EQ for the best instrument reproduction.

OFF - No Input EQ - is used for recorded music playback and electronic dance music applications or when connected to an MV10 output.

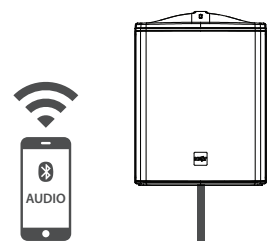
BATTERY LEVEL INDICATOR



BLUETOOTH AUDIO REPRODUCTION

MONO:

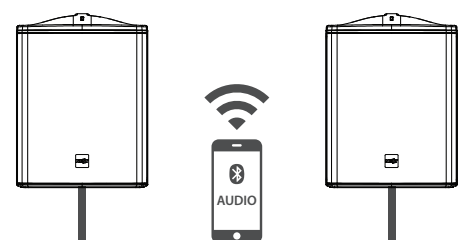
1. Press MODE button until "BT" shows on the display. Now, the speaker is looking for bluetooth devices and the Bluetooth logo, at the lower left corner, will start blinking.
2. On your mobile device, select **NEXT MV10** to initiate the pairing process.
3. Once the device is paired, the Bluetooth logo will turn solid.
4. Play the audio from the mobile device.



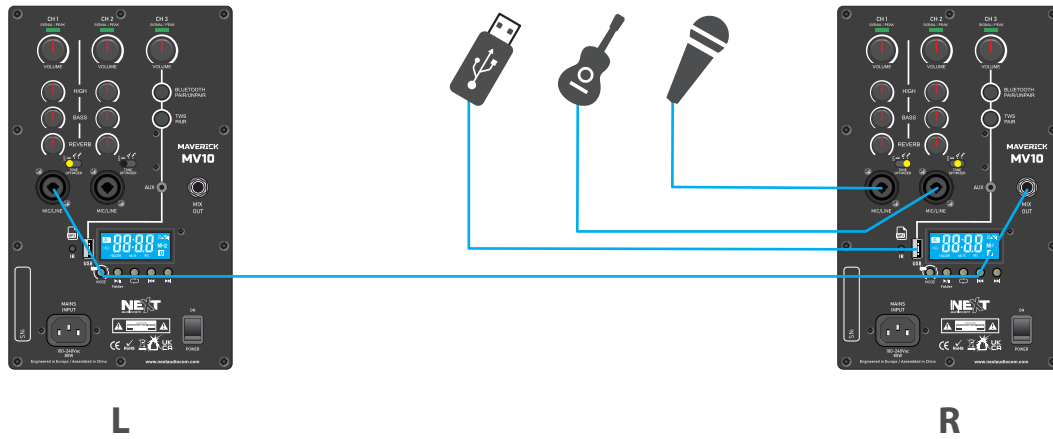
To unpair the speaker from the mobile device press the Bluetooth Pair/Unpair Button.

TWS STEREO:

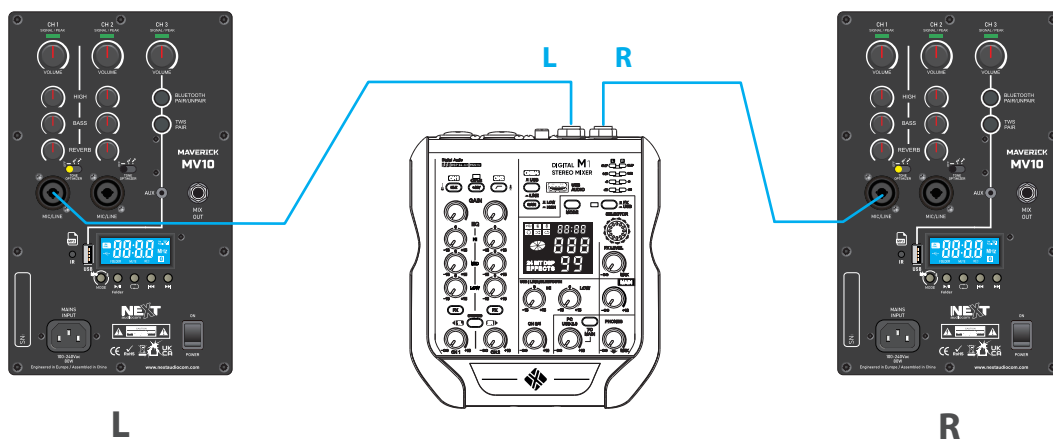
1. Press MODE button until "BT" shows on the display of both speakers.
2. Press TWS Pair button on either of the MV10 speakers. Wait until both speakers successfully connect with each other.
3. On your mobile device, select **NEXT MV10** to initiate the pairing process.



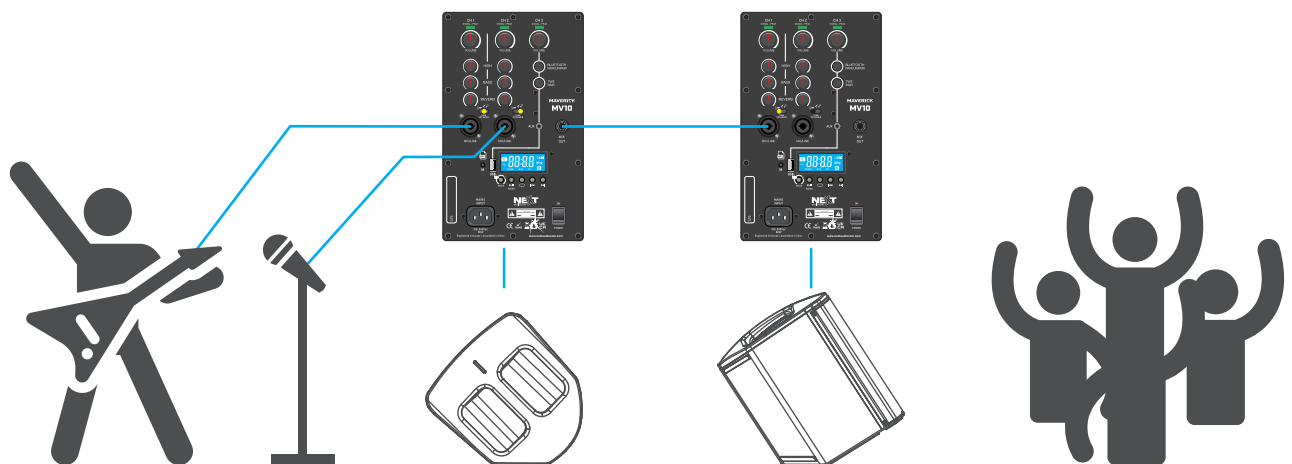
MV10 + USB + MIC + GUITAR



MV10 + STEREO DJ MIXER

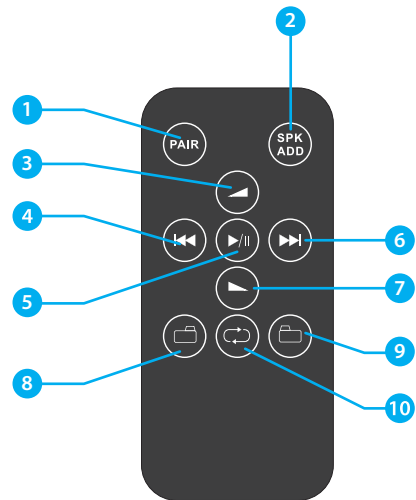


MV10 MONITOR + MV10 30° LEAN BACK



REMOTE CONTROL

- 1 - Pair Bluetooth Audio Device
- 2 - Pair MV10 in TWS mode (Stereo Bluetooth)
- 3 - Increase Volume Level
- 4 - Previous Track
- 5 - Play / Pause
- 6 - Next Track
- 7 - Decrease Volume Level
- 8 - Folder Selection
- 9 - Folder Selection
- 10 - Playback Loop

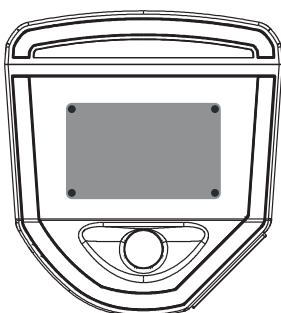


TROUBLESHOOTING

Symptom	Possible cause	Action
All LED OFF on the amplifier panel	AC Cable not connected / Battery discharged	Verify the IEC cable / Charge the battery
Speaker is ON but no sound	Signal source not sending / faulty signal cables	Verify the audio is playing / replace signal cables
No sound from microphone	Condenser microphone - needs phantom power	Switch to a dynamic microphone or use external phantom power for condenser microphones
Sound distorting - peak LED ON most of time	Excessive sound level at the input channel	Reduce the level knob - counterclockwise
Sound distorting - peak LED OFF	Mixer / audio source is overdriven	Reduce level from source / Raise level on MV10
Intermittent output - cracking or distortion	Faulty signal connection	Check and / or replace signal cables
Acoustic feedback from the microphone	Microphone is in front or too close to the MV6	Avoid being in front or too close to the speaker
Skipping or stuttering playback with streaming audio	Paired device is too far from the speaker	Move the device closer to the speaker

BATTERY REPLACEMENT

1. Switch the speaker OFF. Unscrew the four screws at the bottom of the speaker.
2. Unplug the connector, remove and replace the battery, re-connect the plug.
3. Install the bottom cover and secure it with the four screws.



WARRANTY POLICY

NEXT Audiocom's products are warranted, by NEXT Audiocom, against manufacturing defects in materials or craftsmanship over a period of 2 years counting from the date of original purchase. The original receipt of purchase is mandatory for warranty validation purposes, and the product must have been bought from a NEXT Audiocom authorized dealer. The warranty can be transferred to a subsequent owner during the warranty period; however, this cannot extend the warranty period beyond the original warranty period of two years from the original date of purchase stated on the NEXT Audiocom's invoice.

During the warranty period NEXT Audiocom will, at its own discretion, either repair or replace a product which prove to be defective provided that the product is returned in its original packaging, shipping prepaid, to an authorized NEXT Audiocom service agent or distributor.

NEXT Audiocom cannot be held responsible for defects caused by unauthorized modifications, improper use, negligence, exposure to inclement weather conditions, act of God or accident, or any use of this product that is not in accordance with the instructions provided by this manual and/or NEXT Audiocom. NEXT Audiocom is not liable for consequential damages. This warranty is exclusive and no other warranty is expressed or implied. This warranty does not affect your statutory rights.

END-OF-LIFE

When to be definitively put out of operation, take the product to a local recycling plant for a disposal which is not harmful to the environment.

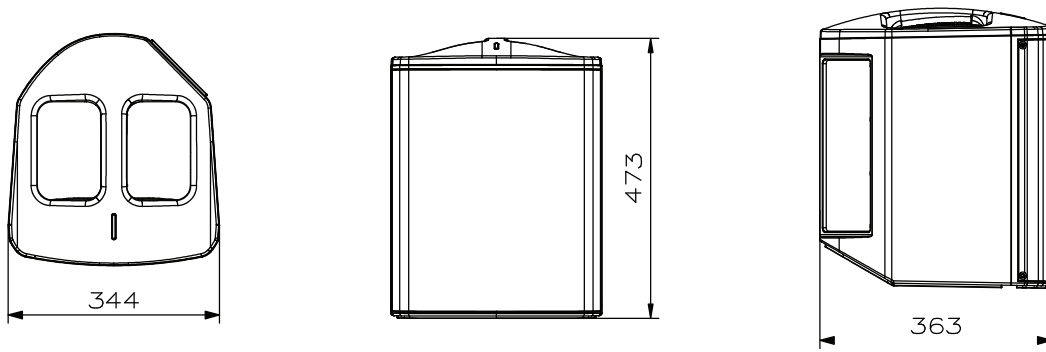
Devices marked with this symbol must not be disposed of as household waste. Contact your retailer or local authorities for more information.



SIMPLIFIED EU DECLARATION of CONFORMITY

Hereby, CVA ELECTRONICA, LDA declares that this radio equipment type is in compliance with Directive 2014/53/EU. The full text of the EU declaration of conformity is available at the following internet address:
www.nextaudiogroup.com/en/apoio-ao-cliente/downloads

DIMENSIONS





Dimensions in millimeters

TECHNICAL SPECIFICATIONS

Speaker Type	Battery Powered Speaker
Frequency Response (-6dB)	42Hz - 20kHz
Calculated Max. SPL (Continuous/Peak)	116dB/119dB (Full-space)
Coverage Angle (-6dB)	100° Conical
Components	LF - 1 x 10" Woofer / 2.5" Voice Coil HF - 1 x 1" (Exit) High Freq. Driver
Program/Peak Power	150W/300W
Mixer	3 Channels
EQ	Bass, High
Effects	Reverb
Tone Optimizer	Microphone and Instrument
AUTO EQ	Automatic EQ when pole mounted
Bluetooth	Stereo Audio Streaming - 10m range
Amplifier Technology	Class D Amplifier with DSP
Cooling	Convection
AC Operating Voltage	100V - 240V 50/60Hz
Nominal Power Consumption	150W (0.6A)
Connectors	Power: 1 x IEC Signal IN: 2 x XLR/TRS combo, 1 x 3.5mm jack, 1 x USB Signal OUT: 1 x TRS 6.35mm
USB	Charging port: 5V, 1A
Fittings	1 x 35mm pole mount socket
Handles	One on Top
Construction	Light-weight ABS plastic
Battery Type	Lithium-ion Rechargeable Battery
Battery Charge Time	3 to 5 Hours
Battery Play Time	Up to 8 Hours
Dimensions WxHxD (mm)	344 x 473 x 363
Net Weight	11.6kg
Shipping Weight	13.7kg

 Rua da Venda Nova, 295 | 4435-469 Rio Tinto, Portugal

 info@nextaudiocom.com

 www.nextaudiocom.com

 [instagram.com/next.audiocom](https://www.instagram.com/next.audiocom)

 [facebook.com/nextaudiocom](https://www.facebook.com/nextaudiocom)

NEXT
audiocom