

*Lasershow  
Designer*

*QUICKSHOW*

**QuickShow**

*Powerful • Affordable • Easy to use*

***Get instant  
excitement  
with QuickShow***



Since 1995, Pangolin's *Lasershow Designer* series has been the world standard for professional-quality laser shows. It is by far the most popular, most award-winning laser software in history.

## **Now, with QuickShow, Pangolin has reinvented laser software**

In *QuickShow*, everything is new – from the powerful *Beyond* calculation engine at its core, to the radically simplified interface featuring QuickTools. The result is the easiest-to-use laser software available *anywhere*.

## **Software for any level of user**

Whether you are new to lasers, or have years of experience, *QuickShow* adapts to your level.

You can do basic shows right out of the box. All you have to do is click on cues, or press keyboard keys, to display them in time to the music. *QuickShow* comes with nearly 2000 pre-loaded graphics, animations, beam effects and abstracts.

But there is far more power in *QuickShow* than simply triggering cues. The next level is the unique QuickTools, which are used to make custom cues such as auto-traced artwork, beam effects, and abstract shapes. For example, the QuickText tool (shown below) makes a variety of scrolling and waving text in easily-selectable fonts, colors and effects.

Finally, for the ultimate in customization, use AdvancedTools for professional-level features such as cue layering and sequencing, automatic beat triggering, timelines for syncing to pre-recorded music, triggering DMX channels, and controlling up to six projectors.

## **Advanced technology**

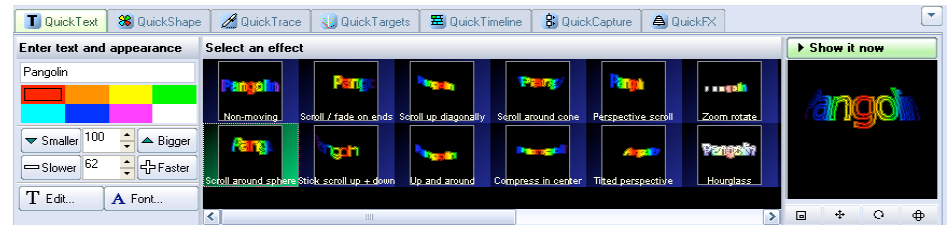
*QuickShow* isn't just about a better user experience. It also has advanced technology such as the all-new *Beyond* calculation engine.

*Beyond* automatically takes care of scanner optimization and color mixing. In tests, *QuickShow* produced noticeably better image quality. One beta tester said "It made my scanners look new again!"

## **Guaranteed satisfaction from the world leader**

Pangolin has the most customer-friendly policies. For example, software updates are always free, your satisfaction is fully guaranteed, and we don't force you to constantly use a USB "dongle" key to unlock your software.

These are among the many reasons that have made Pangolin's software #1 around the world. So, contact Pangolin or your lasershow dealer, and begin creating high-quality laser shows quickly, easily, and at an affordable price with *QuickShow*.



Select Toggle Restart Flash Transition One cue Multi cue 120.0 BPM

Blackout Pause Enable Laser Output

Graphics Atmospherics DMX All Pages  
Bkgnds 2 Bkgnds 3 Abstracts 1 Abstracts 2 Abstracts 3 Logos Text Q-Clicks Chains & Shows  
Animals People+Characters Sports Vehicles Music+Dancers Celebration Themes 1 Themes 2 Misc. Bckgrnds 1

Q	W	E	R	T	Y	U	I	O	P
TomTom	Conga	Guitar	DrumKit	Sax Girl	Trumpet	Sax	Trombone	Notes	Up Bass
q	w	e	r	t	y	u	i	o	p
70's	CanCan	Ballroom		Marijuana	Swing	Dancers	Dancer 4	Glitter Girl	
A	S	D	F	G	H	J	K	L	
Abstract 41	Abstract 42	Abstract 43	Abstract 44	Abstract Lines	Abstract 66	LD Abstract	Abstract Burst 1	Abstract Burst 2	Abstract Burst 3
a	s	d	f	g	h	j	k	l	
Abstract Sym 2	Cookie	Amplitude	Abstract Sym	Abstract Waves	Lightspeed Abs	Three stars	Five stars	Amazing waves	Amazing square
Z	X	C	V	B	N	M	<	>	?
P Logo	Pangolin animal	Uberate yourself	Come fly with...	Time is passing	Time count down	Good as gold	Dolphin	Rise up	Olympic Skills
Z	X	C	V	B	N	M	<	>	?
Pangolin	Rest on Earth	Fastest around	Be a winner!	Easy as cake	Let's Dance!	Superman	Skier		3D Geo Sphere

Let's Dance!

Live Control Effect

Size

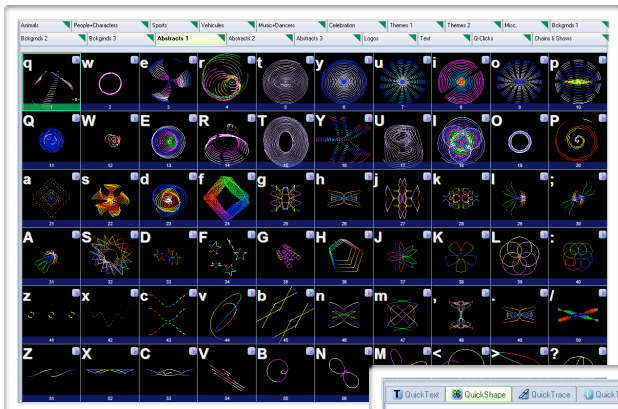
Position and Rotation

Color

FB3:17783 FPS:71

QuickText QuickShape QuickTrace QuickTargets QuickTimeline QuickCapture QuickFX

## Here's an example of how QuickShow has tools for every level of user

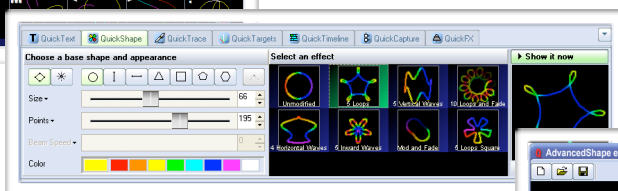


### For an instant show, just click on cues

Let's say you want to display a preset psychedelic abstract design. Click the "Abstracs 1" tab on the main *QuickShow* screen. You'll see 60 cues; each one contains an abstract design.

As you move your mouse over the cues, the designs are animated on the computer screen. This lets you preview how they'll look on the laser projector.

To display the cue you want, simply click the mouse, or press the keyboard key that's in the upper left corner. Instantly, the selected cue is displayed. It couldn't be easier!

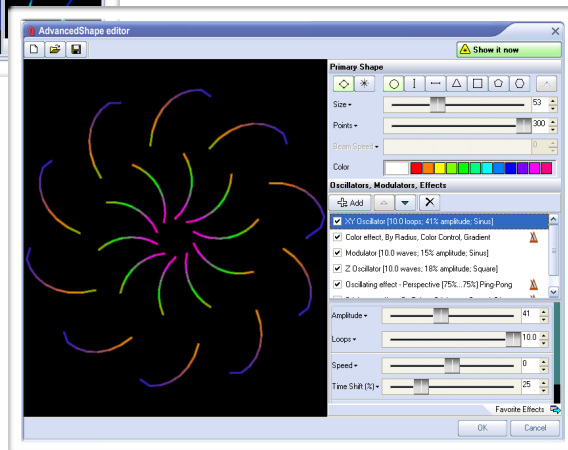


### Create cues with QuickShape

The next level is to make your own custom cues. For abstracts, use the QuickShape tool, which lets you adjust the most important parameters such as size, points color, and speed.

### For expert users, AdvancedShape gives complete control

AdvancedShape lets you add layers of modulators, oscillators, color cycling, and other effects. Apply as many layers as you want, to make mesmerizing spirograph-type images that are difficult or impossible in other laser systems.





*This beam effect is one of the nearly  
2000 pre-loaded cues in QuickShow*

# Get shows done fast and easy, with advanced features like these...

## Work in the background

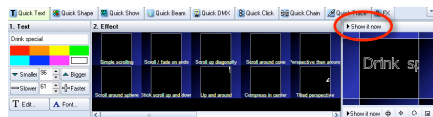
With other laser systems, as you click cues and change controls, your work is updated live to the laser. The audience sees every move you make – even when you don't want them to.

**QuickShow is much smarter.** You can work in the background, setting up cues and trying out different looks. Nothing is sent to the laser until you click the "Show it now" button.

### How background creation works



For example, let's say you are projecting a beer mug, and you want to add some scrolling text advertising a "Drink special".



Call up the QuickText tab and type in the words. Try out different looks and colors. You'll see the text scroll and animate on the computer screen; the audience continues to see only the beer mug.

When you are satisfied, click "Show it now".



Your desired text now scrolls across the screen. Thanks to background creation, it looks perfect as soon as it appears.

## Control your shows using a variety of interfaces

### Mouse



*QuickShow* can be run using just one hand, if you need your other hand free to adjust lights (or hold a drink!).

### Keyboard



Press a key to switch cues on the beat of the music. There are 60 instant cues per screen (3 rows of 10 keys, each shifted or unshifted).

### Touchscreen



*QuickShow* is specifically designed with large cues and controls, for fingertip use on touchscreen notebooks and monitors.

### MIDI controller



Prefer to use a keyboard or other MIDI controller? You can map MIDI keys to cues and controls.

### DMX console



Just like MIDI, you can map DMX channels to display cues and change controls.

## No more worries about dongles



Some laser systems use old-fashioned USB keys or connector blocks as "dongles". These can be a nightmare. If you forget or misplace the dongle, the software won't run. That can ruin your day – or a show.

But ***QuickShow* is friendly and dongle-free.** You can run *QuickShow* with or without any hardware attached.

The only requirement is to authorize your computer one time, by plugging in the *Flashback 3* laser controller that comes with *QuickShow*. After that, you can work online with a *Flashback 3* and your laser projector attached, or offline with no other hardware needed.



*Control up to six laser projectors  
from one QuickShow system*



## Have complete confidence in choosing Pangolin

### The best-selling system in the world

More people use our *Lasershow Designer 2000* than any other lasershow software on Earth. They chose Pangolin because it is powerful, affordable and easy-to-use.

It also means that it's easy to share frames with others, and buy clip art and entire shows that work great with *QuickShow*.



### Updates are always free

We never charge for software updates. As we add improvements and features, just download the newest release from our website. You'll always have the latest version with the most up-to-date features – FREE!

### 90-day money-back guarantee

You can be sure that *QuickShow* is right for you and your laser projector. Just try it out for up to 90 days. If for any reason you are not satisfied, we will refund your purchase price.

### The most awards for technology and show artistry



Pangolin is the lasershow industry technology leader. We have over 20 major ILDA and other awards for hardware and software achievement. This includes the ILDA Hardware Product of the Year award, won by the *Flashback 3* included with the *QuickShow* system.

Perhaps even more important, Pangolin users routinely produce top-quality award-winning shows. In fact, in the last decade, users of Pangolin's *LD2000* system have won over half of all ILDA artistic awards. That's more awards than users of all other lasershow systems combined!

## LD2000 or QuickShow?

Which Pangolin system is best for you? Here is a quick guide:



The *Lasershow Designer* series is the world's best-selling laser light show software. Continuously developed since its introduction in 1989, the latest version, *LD2000*, is primarily designed for professionals who need the most advanced features available anywhere.



*QuickShow* is all-new software and hardware. The design goal was "quick": the ability to easily make a high-quality show. It's perfect for DJs, VJs, club owners, and others who aren't full-time laserists. As your experience increases, you can begin to use the more advanced features in *QuickShow*.

## QuickShow provides capabilities to satisfy every level of user

Preset cues	Custom cues	Display cues	Modify cues	Make a show	Send to laser
<b>Instant Show</b> Anyone can tap out a show to music					
Choose from nearly <b>2000 high-quality graphics, animations and beam effects</b>	→	<b>Click</b> the mouse or <b>press</b> a keyboard key to display the cue.	→	<b>Click or press</b> in time to the music	<b>Automatically displayed</b> on the laser
<b>Custom Show</b> All of the above, <i>plus...</i>					
<b>Load in additional</b> graphics, animations and beam effects files. These can be purchased or traded from others.	<b>Use QuickTools to make custom cues:</b> <ul style="list-style-type: none"> <li>• Type in text</li> <li>• Trace logos</li> <li>• Draw graphics</li> <li>• Make beam shapes</li> <li>• Target mirrors</li> </ul>	<b>Multi-track:</b> Display one or more cues simultaneously	<b>Adjust a cue's</b> size, position, rotation angle, rotation speed, color, color cycling, scan speed and animation frame rate.	Click to <b>add cues to sequences.</b>	<b>Compensate for off-axis scanning</b> using keystone, rotation and other geometric correction controls
<b>Intermediate Show</b> All of the above, <i>plus...</i>					
<b>Copy and move cues</b> (both presets and custom ones) to put all your favorites on a single page (bank).	<b>Use more advanced tools</b> to further refine your custom texts, logos, graphics, beam shapes and mirror targeting.	<b>Work in the background.</b> Keep current cues running on the laser, while you create and fine-tune new cues using the on-screen viewer.	<b>Modify all cues simultaneously.</b> Make the same modifications as above (size, position, etc.) to the entire output.	Have sequences be <b>manually triggered</b> (click mouse/press a key) or be <b>automatically triggered</b> by music beats.	<b>Target different zones</b> within the projector's scan area. For example, graphics go in the center, beams hit side mirrors.
<b>Advanced Show</b> All of the above, <i>plus...</i>					
<b>Make multiple pages</b> of your favorite presets and custom cues. Assign function keys to instantly switch between pages.	<b>Create DMX cues</b> , so you can control lighting, special effects and any other DMX-compatible device from within <i>QuickShow</i> .	<b>Use MIDI or DMX devices</b> , such as keyboards and lighting consoles, to trigger cues.	<b>Apply custom effects to cues.</b> These change a cue over time, such as warping an image or scrolling a frame. Use preset effects or create your own.	Put cues and sequences into a <b>show timeline</b> . Sync to MP3 and other music files. Display multiple timelines simultaneously.	<b>Up to six different projectors:</b> If you have more than one projector, have different cues/shows running on different projectors.

## QuickShow specifications

### What you get

QuickShow software on CD-ROM  
Nearly 2000 pre-loaded cues  
Instruction manual  
Flashback 3 interface box (at right):  
4.2 x 2.8 x 1.3 in (110 x 71 x 33 mm)



### No dongles!

Never worry about forgetting or losing a dongle. You can work on, and display, shows without needing a dongle.

### Cues

Nearly 2000 graphics, animations, beam effects and abstracts are included.

### Abstract frames

Make planetarium-style abstract shapes, such as flowers or spirograph geometric figures.

### Live controls

For a cue or the entire display, adjust size, position, rotation angle, rotation speed, color, color cycling, scan speed and animation rate.

### QuickTools for creation and editing

QuickText, QuickShape, QuickTrace, QuickTargets, QuickTimeline, QuickDMX

### Display methods

Single cue, multi-track cue, sequence cues, timeline show programming.

### Display timing

Manual (mouse/keyboard), automatic to beat (BPM), autorun for sequences and timeline.

### BPM methods

Timed, audio beat detect, manual.

### Preview

On-screen preview of all graphics and beams using Windows *OpenGL*.

### Background work mode

Create/edit cues on-screen without affecting laser output. Only show your cues when you are done. The audience never sees your background work.

### Autotrace bitmaps

Import GIF, JPG, BMP files and convert instantly to laser. Outline and centerline tracing modes.

### Control DMX devices

Set up to 512 DMX channels per cue. Unlimited number of cues or "looks".

### Custom effects

Apply one or more effects to a cue, a sequence or a timeline event. Effects include colors (preset and changing), pulse/flash/strobe, trace, chop, ripple, mirror, double, scroll, rock, throb, zoom and bounce.

### Projector correction and zones

Full geometric correction for off-axis scanning. Hit multiple screens from one projector, using projection zones (cues are positioned and scaled to appear in part of the scan area).

## Hardware requirements

### Computer requirements

PC notebook or desktop  
Dual-core processor such as Intel Centrino Duo, Core 2 Duo, or AMD equivalent  
Operating system: Windows XP, Vista or 7  
At least one available USB port

### Optional devices

- **Touchscreen** QuickShow is designed so it can be used with a touchscreen notebook or monitor
- **MIDI controller** Trigger cues using MIDI devices such as keyboards. A MIDI interface may be required to connect to computer's USB port.
- **DMX interface** Required for DMX input (a console triggers QuickShow cues) and for DMX output (QuickShow cues trigger external devices such as lights and foggers). Contact Pangolin for recommended/tested models.

### Projector requirements

A lasershow projector with ILDA-standard input connector  
Any speed scanners, from 10K to 60K+  
Any color, from single-color to full-color RGB

### Optional control for up to 6 projectors

The QuickShow system comes with one Pangolin Flashback 3 laser controller. This connects between your PC computer's USB port, and your laser projector's ILDA input.

To control additional projectors, you can add up to five more Flashback 3 laser controllers.



## **Pangolin Laser Systems, Inc.**

9501 Satellite Boulevard, Suite 109, Orlando, FL 32837 USA  
Phone: +1 407-299-2088 • Fax: +1 407-299-6066  
[www.pangolin.com](http://www.pangolin.com) • [contact@pangolin.com](mailto:contact@pangolin.com)

### **Other quality products from Pangolin**

Lasershow Designer 2000: Laser software for full-time professionals  
LivePRO: Advanced live performance laser software for LD2000 and FB3  
QM2000.NET: Control projectors over wired or wireless Internet connections  
Lasershow Converter MAX/4D/FLASH: Convert 3D & 2D graphics into lasers  
PASS: Professional audience-scanning safety system -- meets strict U.S. rules  
Lasershow Performer console: Custom-designed console for LD2000 & LivePRO  
Discoscan: Wide-angle lens systems to scan up to 360 degrees by 180 degrees  
SMS text messaging: Advanced video or laser display of SMS text conversations  
LASORB: Electronic component that prevents electrostatic damage to laser diodes