

Safety regulations

ADMIRAL Couplers can only be installed or used by competent and/or qualified personnel.

Before using a Coupler you should inspect them visually for any damage. If the coupler is damaged you should be taking it out of service and return it to your local ADMIRAL dealer for inspection.

ADMIRAL Coupler RIHAHCA60 is designed to specifically attach to round tubes of \varnothing 48-51mm and is forbidden to be used in falsework structures.

During installation of the Coupler you must take care not to overtighten the wing nut or wing handle. This to prevent damage to the tube and/or the Clamp/Coupler. If you use only one wing nut or wing handle, it is preferred to only hand tighten it. When you use an additional nut, below the wing nut or wing handle, follow this torque setting: Max. 22-25 N-m.

ADMIRAL Coupler RIHAHCA60 comes with an indicated WLL of 500kg. This WLL may not be exceeded or any other max. load given as instructed during installation. Couplers that are being used in combination with accessories, should never exceed the max. load of the used accessory.

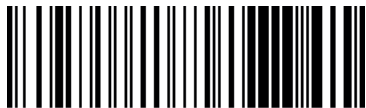
WARNING

Always make sure you double lock the ADMIRAL Couplers, with e.g. two nuts.



Swivel coupler 48-51mm 50mm

ADMIRAL CODE:



RIHAHCA60

EAN



8 720094 421469

A product of ADMIRAL

Josink Kolkweg 10, 7545 PR Enschede
The Netherlands, +31 534 301 201



USER MANUAL



Swivel coupler 48-51mm 50mm



www.admiralstaging.com

Half coupler



Ø 32 - 35mm
WLL 75kg



Ø 48 - 50mm
WLL 100kg



Ø 48 - 51mm
WLL 200kg



Ø 48 - 51mm
WLL 200kg



Ø 48 - 51mm
WLL 500kg



Ø 48 - 51mm
WLL 750kg



Half coupler with lifting eye



Ø 48 - 51mm
WLL 200kg



Swiffel coupler



Ø 48 - 50mm
WLL 100kg



Ø 48 - 51mm
WLL 200kg



Ø 48 - 51mm
WLL 500kg



ADMIRAL CLAMPS AND COUPLERS

Admiral supplies a vast array of clamps and couplers, from aluminum half couplers to swivel couplers with a WLL up to 750kg.

Quick coupler



Ø 48 - 51mm
WLL 250kg



Selflock coupler



Easy
Ø 48 - 51mm
WLL 250kg



Shorty
Ø 48 - 51mm
WLL 100kg



C-clamp



Ø 48 - 50mm
23cm/40cm/60cm



G-clamp



Ø 48 - 50mm
23cm/40cm/60cm



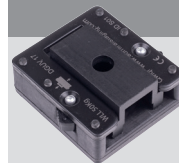
G-clamp straight



Ø 48 - 50mm
WLL 50kg



Qwiqr



With the Qwiqr you connect your hooks onto a luminaire with only one click.

Slide the hook into the housing and click!



Safety cable

Mount the safety cable in a small loop to absorb the weight when falling. Accident avoided.

60 cm / 100 cm



complies with
BGV-C1

