

Aesthetic sound





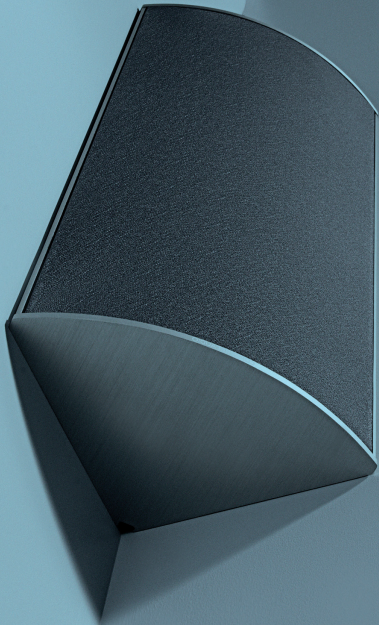
**Corner yourself.
With great sound and smooth design.**

Finding the perfect speakers for your home can be quite a challenge. Good sounding speakers are typically big and bulky. Whereas small and neat speakers typically sound – well – small and neat. But, look no further.

With CORNERED's patented triangular speakers, you don't have to sacrifice perfect sound on the altar of contemporary interior design. Our speakers mount in corners or onto walls without brackets. They are discreet, elegant and despite their compact size, they offer superb sound quality, capable of reproducing a large, natural three-dimensional sound stage, filling your room with loud, clean sound. And this without ever stealing the picture.

CORNERED speakers are the ideal choice, whether you listen to two-channel music or multichannel surround sound. So lean back and enjoy the clarity and detail of the strings, brass, woodwind and percussion sections of a symphony orchestra - the guitars, vocals, bass lines and drums of a loud and wild rock band - or the impressive effects of the latest action movie. We pride ourselves in our acoustic designs and aim at making listening to music one of your favorite activities.





What makes CORNERED speakers so special?

CORNERED speakers are designed with a unique 90-degree triangular shape for a perfect fit in the corner. While traditional speakers are not recommended for installation in corners, there are a number of good reasons for designing the speakers especially for corners:

- The corner placement gives you higher output and fills the entire room with sound
- CORNERED speakers take up less space and blend in well, so that they won't steal the picture
- Your cables can run discreetly in the corner, making the overall impression pleasing to the eyes

Moreover, the cabinets are very compact as they are made of a combination of extruded aluminum and solid wooden MDF front plates. This innovative combination of materials offers great acoustic properties and makes the sound very clean and natural.

CORNERED speakers also offer these unique advantages:

- They are installed directly on the wall, without a bracket taking up space behind the speaker
- The mounting points of the speakers are an integrated part of the design, elegantly hidden behind the front cover
- They have no visual cable terminals. The cable simply runs in a slide at the rear of the cabinet



CORNERED SPEAKERS

Also a treat for the audiophile

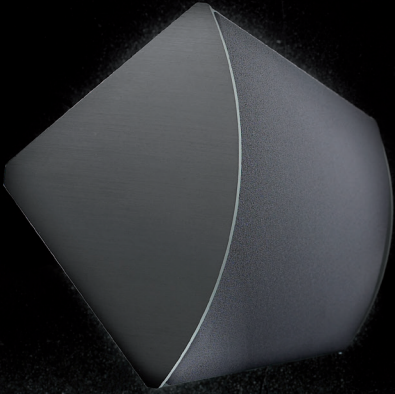
Cornered speakers make for an elegant installation in your home, but above all they are designed as true audiophile speakers, capable of reproducing clean and lively sound with a large natural three-dimensional sound stage.

World-class drivers

The loudspeaker drivers represent the knowhow of more than 70 years of Danish acoustic engineering. All models are optimized for on-wall or corner position by compensating for the bass amplification in the corner - which gives a predictable boost at +6 dB per octave below 160 Hz. By allowing the woofers to roll off slightly below 160 Hz, the bass output will be linear and as a bonus the sensitivity of the speaker is increased, which means that you will experience surprisingly strong sound pressure from the compact cabinets. The woofer baskets are designed to offer good cooling of the motor systems, so you can push the speakers for hours while maintaining great dynamics.

Tweeter with remarkable clarity

The tweeters features silk domes which reproduces clean and smooth high frequencies beyond 25 kHz. With large surrounds, the tweeters have a very good dispersion making them a perfect fit for the woofers. In addition, the surround design offers a low resonance point which adds to the very open and clean sound.



Specifications



C3

COLOURS



Woofer:	4"
Tweeter:	1" silk dome
Recommended amplifier:	40-100 watt in 8 ohm
Sensitivity:	86 dB
Frequency response:	70 - 25 kHz
Nominal impedance:	8 ohm
Measurement (HxWxD):	371 x 174 x 124 mm
Weight:	2,7 kg



C4

COLOURS



Woofer:	4" + 4" slave
Tweeter:	1" silk dome
Recommended amplifier:	50-120 watt in 8 ohm
Sensitivity:	86 dB
Frequency response:	64 - 25 kHz
Nominal impedance:	8 ohm
Measurement (HxWxD):	395 x 191 x 135 mm
Weight:	3,3 kg



C5

COLOURS



Woofer:	5/4" + 5/4" slave
Tweeter:	1" silk dome
Recommended amplifier:	50-150 watt in 8 ohm
Sensitivity:	86 dB
Frequency response:	59 - 25 kHz
Nominal impedance:	8 ohm
Measurement (HxWxD):	436 x 213 x 154 mm
Weight:	4,1 kg



C6

COLOURS



Woofer:	6½"
Tweeter:	1" silk dome
Recommended amplifier:	100-200 watt in 8 ohm
Sensitivity:	90 dB
Frequency response:	70 - 25 kHz
Nominal impedance:	8 ohm
Measurement (HxWxD):	502 x 232 x 167 mm
Weight:	5,2 kg



C6TRM

COLOURS



Woofer:	6½" neo
Tweeter:	1" horn loaded
Recommended amplifier:	150-350 watt in 8 ohm
Sensitivity:	92 dB
Frequency response:	70 - 20 kHz
Nominal impedance:	8 ohm
Measurement (HxWxD):	502 x 232 x 167 mm
Weight:	5,9 kg

