

AC612 DIN

DMX controllers with 12 memories and contacts

The AC612 DIN is part of the AC612 range of DMX sequence player range.

Based on the AC612 XUB 12-memory push-button unit, this DIN-rail mounted version has contact closure terminals for each memory/chase making it ideal for system integration.

A USB connection is provided for programming, and the versatile design incorporates a programmable DMX merger.

Features include:

- 12 memories of 512 DMX channels.
- Switch contact terminals to trigger individual memories.
- Each memory can be a scene or a chase (total capacity 126 steps).
- Stores chaser step length and times.
- Editor software.
- DIN rail mounted.
- Hardwired connections for keyboard functions.
- Allows custom buttons and switches for system integration projects.



Specifications:

- Dimensions: 6M wide DIN rail mounting.
- Power: External power supply, 9-24Vdc, 200mA.
- Connections: Screw terminals for power in, DMX in and out, USB and 12 contact closure inputs.
- Options: AC612 Editor software (free download from www.elclighting.com).
- Supplied: Control unit and operator leaflet (external power supply required).

Related products:

AC612 XUB: DMX sequence player with 12 push buttons.

AC612 XUF: DMX sequence player with 5 faders, terminal connections, USB port.

AC612 XUBF: DMX sequence player with 3 faders, 6 keys, terminal connections, USB port.

SideKick too: 30 memory storage with 30 recall buttons and 10 faders.

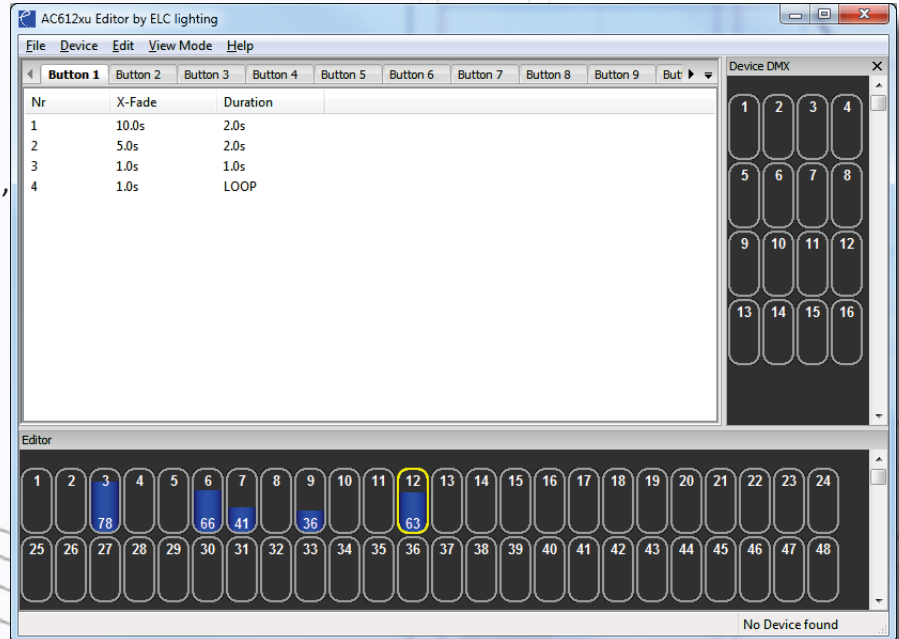
Product Code: AC612DIN

AC612 Editor software

Used for the AC612 and Sidekick too ranges of DMX controllers. AC612xu Editor provides simple and intuitive programming access from any PC or Mac.

It can be used to create memories (required for AC612 DIN which does not have the data capture controls of the other AC612 and Sidekick too controllers), with each memory having its own crossfade and duration.

AC612 Editor software is available as a free download from the ELC website.

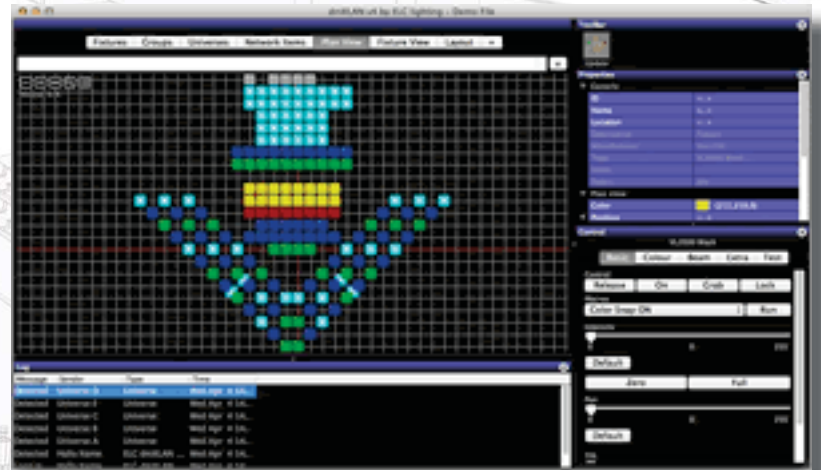


dmXLAN software

ELC's dmXLAN network system is created by combining DMX/Ethernet nodes, DMX/Ethernet recorders and intelligent network switches.

All of these units can be configured using this free dmXLAN software for Windows (7, XP and Vista), Apple Mac OS X (10.4 and up as universal binary), Windows Pocket PC 2003 and Windows mobile 5 and later.

The software can be used to configure and monitor the dmXLAN network, and also to control and test lighting fixtures connected to the dmXLAN network, independent of the brand of consoles and lighting fixtures used.



dmXLAN software is available as a free download from the ELC website.

- Triple universe merge
- Full RDM functions, commands and feedback
- DMX history view
- Fixture patch importing
- Export and printing of any list

All pictures are for information only. Products, specifications and timescales subject to change without notice.

AVL Copyright © 2013