

DATASHEET VINCI RUBY FROSTED

PRODUCT

Partnumber	V-P-RU-F-E27-EU
Description	Powerline controlled rgbw bulb

MECHANICAL

Cover Shape	S14
Finish	Opaque
Lamp Base	E27
IP rating	IP65
Max ambient temperature	45°C
Size	H: 114mm x D: 50mm
Weight	96g

MATERIALS

Cover	Polycarbonate (PC) Flame class: V-0, HWI: 2, HAI: 1, RTI Elec: 125, RTI Imp: 115, RTI Str: 125
Base	Polycarbonate (PC) Flame class: V-0, HWI: 2, HAI: 2, RTI Elec: 125, RTI Imp: 115, RTI Str: 125
Filament holder	/
Diffusor plate	/
Screw base	Steel with nickel layer and glass

DATA PROTOCOL

Framerate	25 FPS for all bulbs (DMX compatible speed)
Channel mapping	CH1: RED , CH2: GREEN, CH3: Blue, CH4: white
Greyscale	8bit/ channel
Communications dataprotocol to bulbs	Proprietary Power-line Communications protocol

ELECTRICAL

Voltage	220-240 VAC - 50 +-1 Hz
Watts	4W

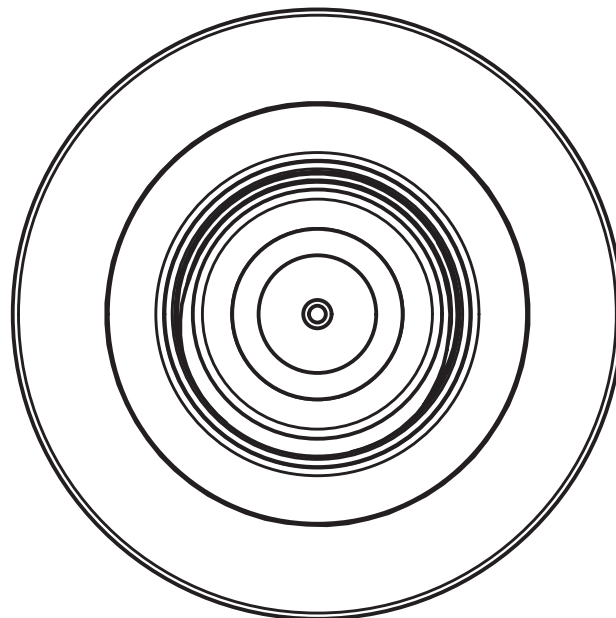
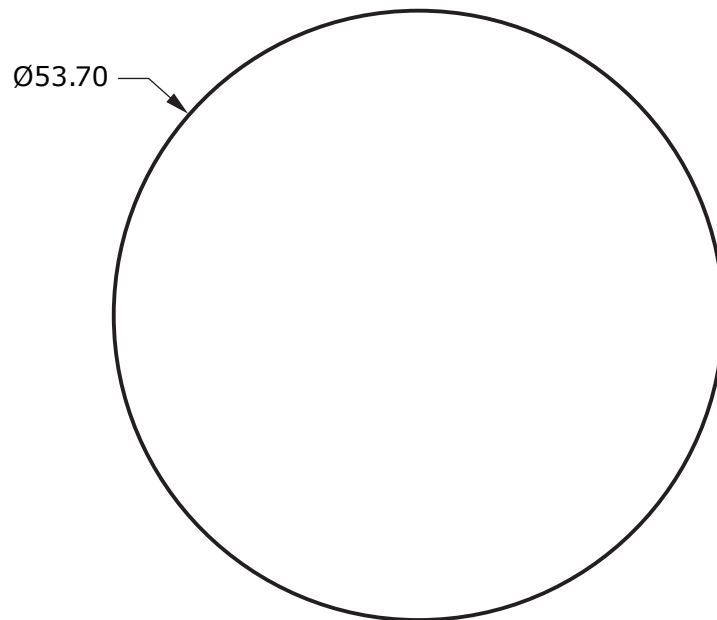
COLORIMETRY

LED Type	RGBW smt led
Luminous flux (lumen) : Red	4,1
Luminous flux (lumen) : Green	9,5
Luminous flux (lumen) : Blue	2,7
Luminous flux (lumen) : White	17,6
Luminous flux (lumen) : White filament	/
Filament color temperature / CRI	/
Life Expectancy	+ 15,000 hrs

FUNCTIONAL

Application	
Controller	Only compatible with Vinci Controllers
Retrofit Use	Can be used with standard socket wires, consult "Vinci sytem documentation" for recommended wiring topologies
Static color (standalone use without controller)	A fixed color can be saved inside bulb. Color will be shown when bulb is powered without "Vinci controller"

VINCI RUBY DIMENSIONS



Vinci Ruby
Scale: 1,5

VINCI RUBY DIMENSIONS

