

1804 mm

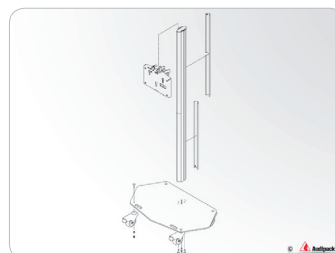
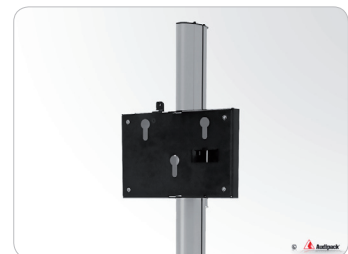
Single column floor stand on wheels for flat panels up to 30 Kg.

Free standing and movable floor stand for flat screens. The single column floor stand is supplied with high quality swivel/break wheels.

The column has 3 separate cable passages allowing a separate passage of power, audio and data cables.

The presentation height of the flat panel is adjustable. This floor stand is suitable for flat panels with a maximum screen size of 55 inch, in landscape or portrait orientation.

- ▲ **High quality swivel/break wheels**
- ▲ **Integrated ruler for screen height positioning**
- ▲ **3 separate cable channels**
- ▲ **Suitable for all brands of flat panels**
- ▲ **Landscape and portrait orientation of the screen**



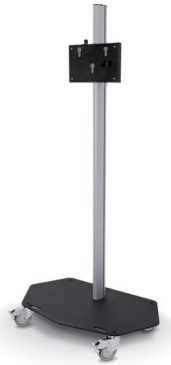
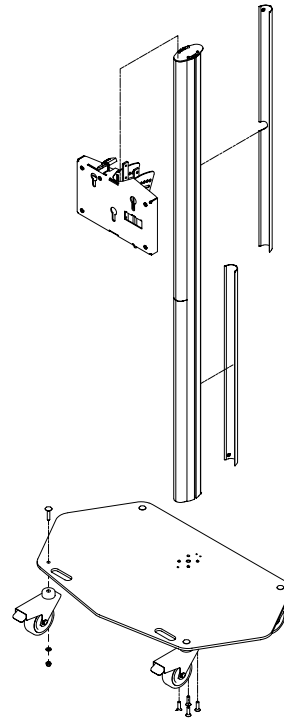
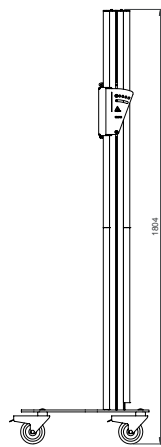
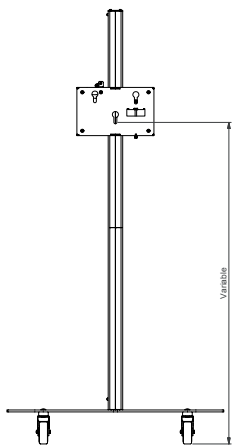
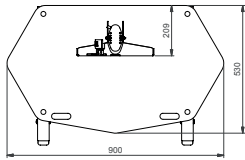


Audipack®

It's great to have solutions...

FACT SHEET

390774



Technical specifications

Dimensions in mm	W900 x D530 x H1804
Max. screen size	55 inch
Max. load	30 Kg
Mounting interface	L&S 3
Colour	Floor plate: Black, RAL 9005 Columns: Anodised aluminium
Weight	29 Kg
Screen orientation	Landscape or Portrait

Optional

- Mounting bracket (required for screen installation)
universal models and brand related models available
- Laptop supports, 390729, 390730
- Camera support, 390731
- Equipment holders, EC-1, EC1AC
- Mounting head for multiple screen installation, 390763
- Portrait/Landscape adapter, P3496
- Lock for protect the screen against theft, 230052
- Soundbar mounting interface, LSS-FS700