

## Safety regulations

ADMIRAL Couplers can only be installed or used by competent and/or qualified personnel.

Before using a Coupler you should inspect them visually for any damage. If the coupler is damaged you should be taking it out of service and return it to your local ADMIRAL dealer for inspection.

ADMIRAL Coupler RIHAHCA41 is designed to specifically attach to round tubes of  $\varnothing$  48-51mm and is forbidden to be used in falsework structures.

During installation of the Coupler you must take care not to overtighten the wing nut or wing handle. This to prevent damage to the tube and/or the Clamp/Coupler. If you use only one wing nut or wing handle, it is preferred to only hand tighten it. When you use an additional nut, below the wing nut or wing handle, follow this torque setting: Max. 22-25 N-m.

ADMIRAL Coupler RIHAHCA41 comes with an indicated WLL of 200kg. This WLL may not be exceeded or any other max. load given as instructed during installation. Couplers that are being used in combination with accessories, should never exceed the max. load of the used accessory.

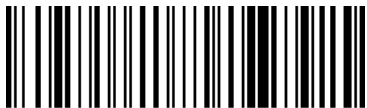
### **WARNING**

Always make sure you double lock the ADMIRAL Couplers, with e.g. two nuts.



## Half coupler 48-51mm 30mm BK

ADMIRAL CODE:



RIHAHCA41

EAN



8 720094 421391

### A product of ADMIRAL

Josink Kolkweg 10, 7545 PR Enschede  
The Netherlands, +31 534 301 201



USER MANUAL



## Half coupler 48-51mm 30mm BK



[www.admiralstaging.com](http://www.admiralstaging.com)

### Half coupler



Ø 32 - 35mm  
WLL 75kg



Ø 48 - 50mm  
WLL 100kg



Ø 48 - 51mm  
WLL 200kg



Ø 48 - 51mm  
WLL 200kg



Ø 48 - 51mm  
WLL 500kg



Ø 48 - 51mm  
WLL 750kg



### Half coupler with lifting eye



Ø 48 - 51mm  
WLL 200kg



### Swiffel coupler



Ø 48 - 50mm  
WLL 100kg



Ø 48 - 51mm  
WLL 200kg



Ø 48 - 51mm  
WLL 500kg



## ADMIRAL CLAMPS AND COUPLERS

Admiral supplies a vast array of clamps and couplers, from aluminum half couplers to swivel couplers with a WLL up to 750kg.

### Quick coupler



Ø 48 - 51mm  
WLL 250kg



### Selflock coupler



Easy  
Ø 48 - 51mm  
WLL 250kg



Shorty  
Ø 48 - 51mm  
WLL 100kg



### C-clamp



Ø 48 - 50mm  
23cm/40cm/60cm



### G-clamp



Ø 48 - 50mm  
23cm/40cm/60cm



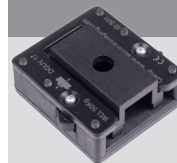
### G-clamp straight



Ø 48 - 50mm  
WLL 50kg



### Qwiqr



With the Qwiqr you connect your hooks onto a luminaire with only one click.

Slide the hook into the housing and click!



### Safety cable

Mount the safety cable in a small loop to absorb the weight when falling. Accident avoided.

60 cm / 100 cm



complies with  
BGV-C1

