

# CORNERED AUDIO LS1



## FEATURES

6 1/2" woofer with neo magnet  
 2 x 1" horn loaded dome tweeters  
 Aluminium cabinet  
 Designed for high SPL applications

## COLOURS



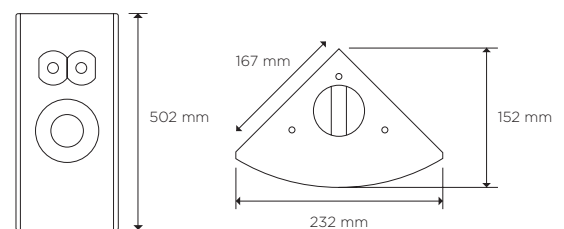
## Description

LS1 is a very compact speaker designed to be flown horizontally in compact Line Source applications. Flying up to 8 pcs per side, the LS1 is designed for medium to high SPL applications in Theatres, Hotel Lobbies and Bars.

Weighing in at less than 7 kg per speaker, the LS one offers very high SPL-to-weight and SPL-to-size ratio. Drive units in the LS1 have been designed by the finest European manufacturers. The 6 1/2" woofer features a strong neodymium magnet with state-of-the-art-cooling and less than 1,8 dB power compression after 8 hours of maximum SPL.

The closely spaced 1" horn-loaded dome tweeter offers excellent sensitivity and combines the output of a horn-loaded design with the clarity of a dome tweeter. The extruded aluminium cabinet is well damped and the triangular shape minimises standing waves inside the cabinet. LS1 offers quality sound reproduction for applications where top performance is a must.

## DATA



Power handling, IEC268:	250 watt
Power handling, peak:	1000 watt
Sensitivity, 2.83V/1m:	92 dB
Maximum SPL, long term:	116 dB
Maximum SPL, peak:	122 dB
Frequency response:	70-20.000 Hz
Nominal impedance:	8 ohm
Dispersion:	90x60 degree
Weight:	6,4 kg
Measurement:	(HxWxD) 502x232x167mm

# CORNERED AUDIO LS1

## Architectural Specifications

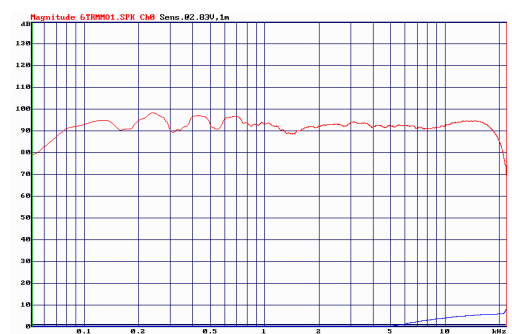
The loudspeaker system shall consist of a 6 ½" woofer with neo magnet system and two 1" horn loaded tweeter with the voice coil dampened with magnetic oil for improved power handling. The frequency dividing network shall utilize polypropylene capacitors to reduce hysteresis and air coils to reduce compression.

Performance specifications of a typical production shall be as follows: SPL at 1 m with 2.83 V input shall be at least 92 dB. Nominal impedance shall be 8 ohms, with minimum impedance being 5,2 ohm @ 350 Hz. Rated power handling according to IEC 268-5 shall be at least 250 watt.

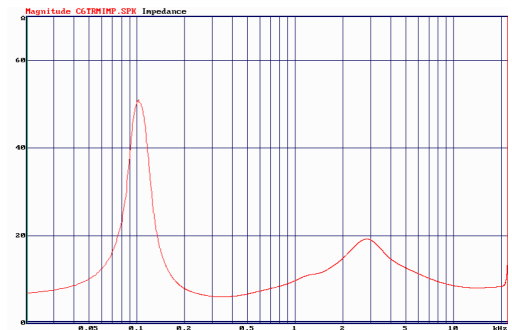
Frequency response shall be from 70-20kHz +/- 3 dB. Dispersion shall be 90x60 degree. The enclosure shall be rectangular in shape with no visible cable terminals and with a 90 degree angle. It shall be manufactured of aluminium with an MDF baffle and shall incorporate integrated mounting points which allow up to 8 speakers to be flown horizontally.

The enclosure shall be rectangular in shape with no visible cable terminals and with a 90 degree angle allowing the speaker to be mounted in corners. It shall be manufactured of aluminium with an MDF baffle and shall incorporate integrated mounting points which allow the speaker to be mounted without brackets. Outside dimensions shall be no greater than 502mm (height) x 232mm (width) x 167mm (side) and weight shall be 6,4 kg. The loudspeaker system shall be the Cornered Audio LS1. Outside dimensions shall be no greater than 502mm (height) x 232mm (width) x 167mm (side) and weight shall be 6,4 kg. The loudspeaker system shall be the Cornered Audio LS1.

### FREQUENCY RESPONSE



### IMPEDANCE



CORNERED Audio ApS  
Roskildevej 16A  
2620 Albertslund  
Denmark

Mail [info@cornered.dk](mailto:info@cornered.dk)  
Tel +45 43 66 10 88  
Web [www.cornered.dk](http://www.cornered.dk)