

Software updating

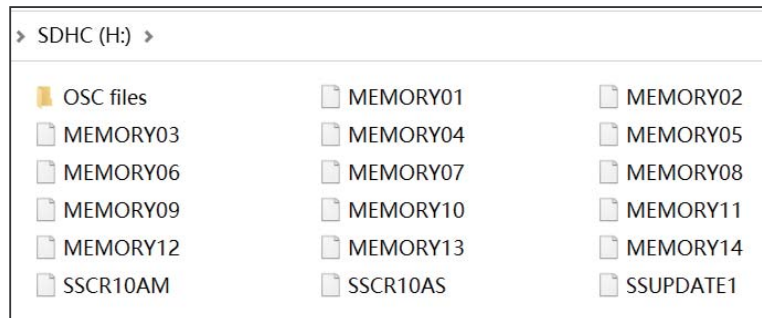
The software can be upgraded via SD card as following steps:

- 1) Copy the new software (SSCR10AM & SSCR10AS) to the root directory of SD card.
- 2) Insert SD card and press Menu button till "SYSTEM setup [new software]" shows on display.
- 3) Press Enter button.

What is SD card

The following files are stored in SD card:

14 Memory files, 3 system files, TouchOSCEditor and RECORDER1024 (Layout) in folder named OSC files.



SPECIFICATIONS

Default LAN IP address: 002.114.034.200
Default WiFi IP address: 002.000.000.000
DMX In: 2 x 3pin (or 5pin) XLR male
DMX Out: 2 x 3pin (or 5pin) XLR female
Power consumption: 6w max.
Power In: AC 100-240V 50-60Hz
Dimension: 482*200*44 mm
Weight: 2.0 kg

IMPORTANT INFORMATION!

In order to optimize the recovery and recycling of the materials that old appliances contain and reduce the impact on human health and the environment, ensure that this product is recycled at the end of its life.



Show Replay 1024

Version: V2.0



User Manual

This manual contains important information.
Please read before operating fixture.



INTRODUCTION

The Show Replay 1024 is a very useful and versatile DMX tool. It is more than a DMX recorder, it is a DMX signal booster, ArtNet to DMX node, DMX merger. To optimize the performance of this product, please read the user manual carefully before use.


What Is Included

The following items are included in the box:

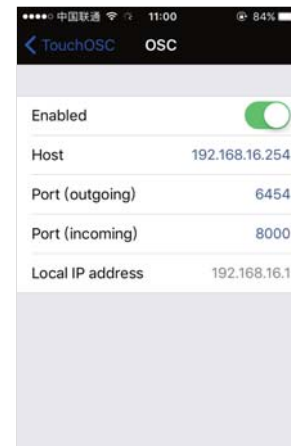
- 1pc Show Replay 1024
- 1pc 32G SD card
- 1pc Power cable
- 1pc User Manual

Carefully unpack the carton, check the contents to ensure that all parts are present, and have been received in good condition. Contact your supplier immediately and retain packing material for inspection if any part is missing or damaged.

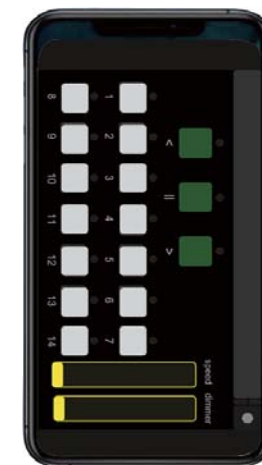
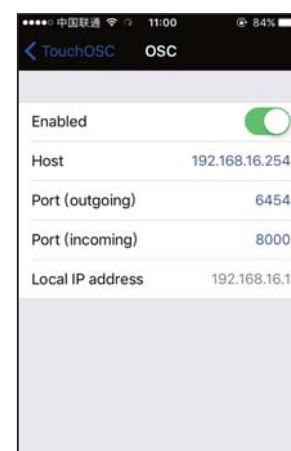
Safety Instruction

**WARNING!!! To reduce the risk of fire, electric shock, or injury to persons, follow these important safety instructions:**

- This product is intended for indoor use only!
- Always turn off, unplug power and allow fixture to cool before servicing.
- Ensure that fixture is properly grounded.
- Please keep this User Guide for future consultation.
- To prevent risk of fire or shock, do not expose fixture to rain or moisture.
- The unit must be installed in a location with adequate ventilation. Be sure no ventilation slots are blocked.
- Make sure power cord is never crimped or damaged.
- Do not remove the top cover under any conditions. There are no user serviceable parts inside.
- Disconnect the unit's main power when left unused for long periods of time.
- Never connect this unit to a dimmer pack.
- Never operate this unit when it's cover is removed.
- Any damage caused by manual modifications are not subject to warranty.



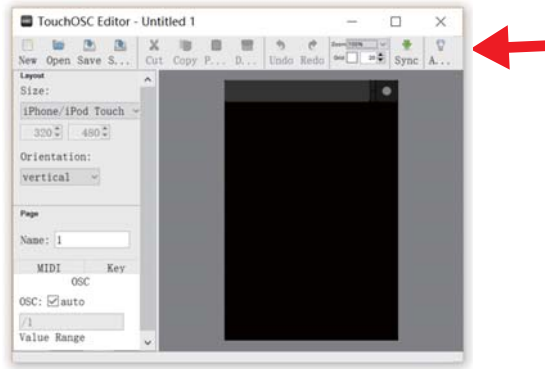
9. Click done and now your Phone/Pad will have the same interface as Recorder.



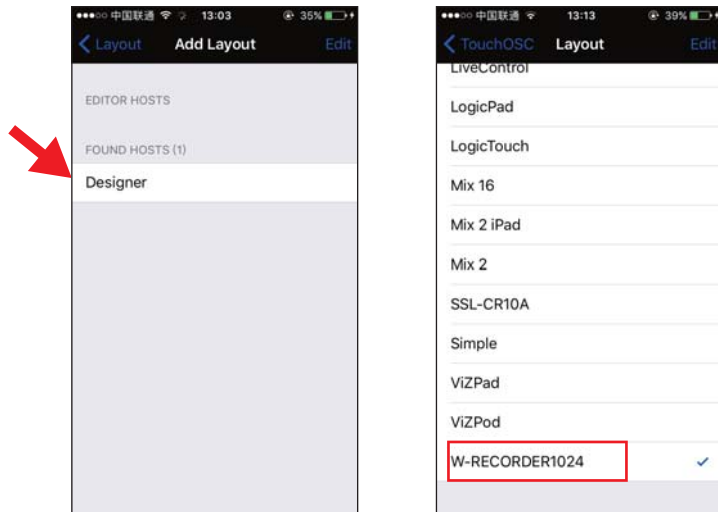
Note: to upload the layout from PC/Laptop to your Phone/Pad, both devices must be on the same LAN (local area network)

10. To control the RECORDER with your Phone/Pad, connect Phone/Pad to Recorder's WiFi hotspot (password: 12345678), press REPLAY button on Recorder and run OSC on Phone/Pad.

6. Click "Sync" on TouchOSCEditor and the name of PC/laptop will be shown on your Phone/Pad.



7. Click the name of PC/laptop on your Phone/Pad and confirm OK, then you will see the name in layout list. Click and select it.

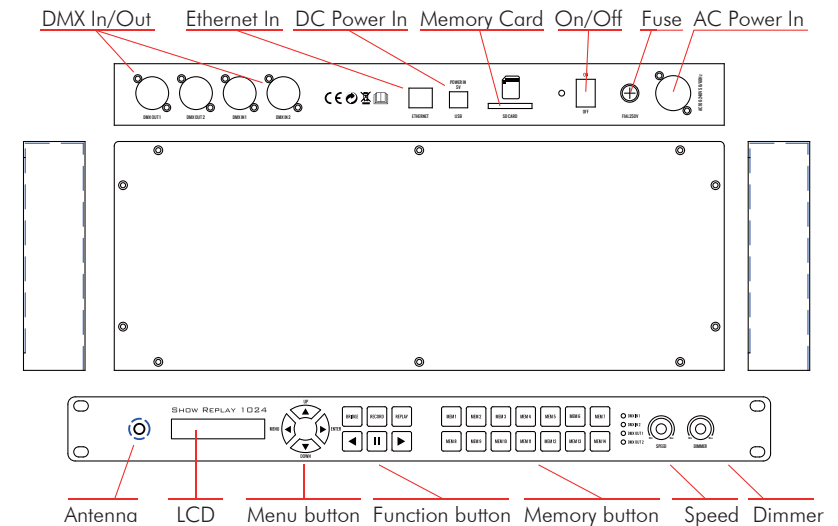


8. Click on OSC:192.168.16.254 (IP of RECORDER), and then set Port(outgoing): 6454 and Port(incoming): 8000 as figure below.

Features

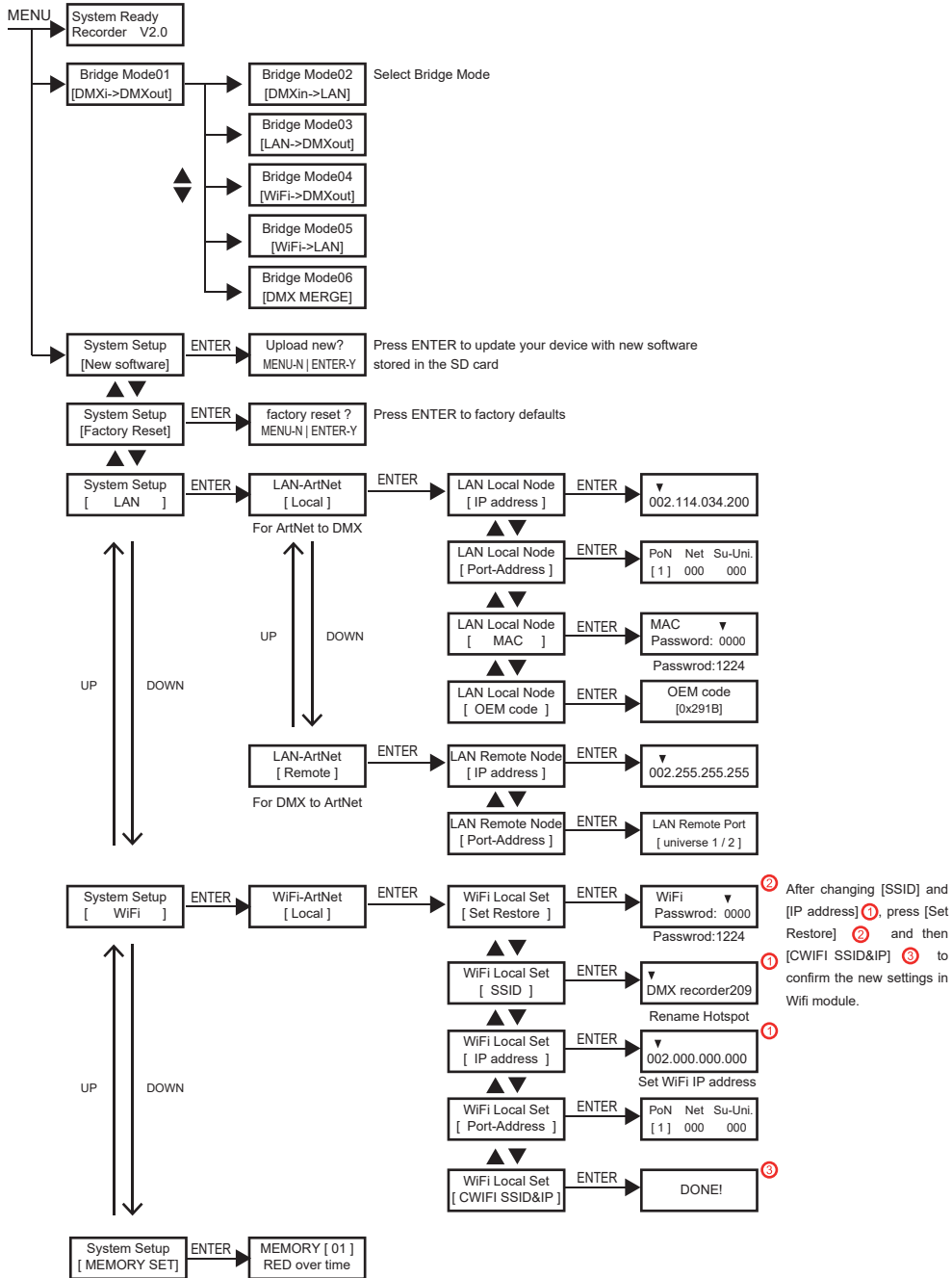
- Supports ArtNet and DMX
- 1024 channels DMX in & out
- Real-time or step-by-step record from DMX / Artnet (via Lan or WiFi)
- 14 Memories and each up to 20 hours can be stored in SD card
- Replay can run in solo or loop mode
- Replay can run on iPad/iPhone via TouchOSC
- Bridge functions:
 - DMX input to DMX output (signal booster)
 - DMX input to Arnet output via LAN
 - Artnet input via LAN to DMX output
 - Artnet input via WiFi to DMX output
 - Artnet input via WiFi to ArtNet out from LAN
 - DMX Merge (HTP/LTP/override/backup)

Product Overview

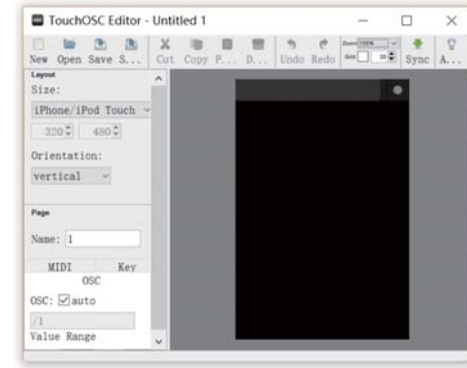


OPERATING INSTRUCTIONS

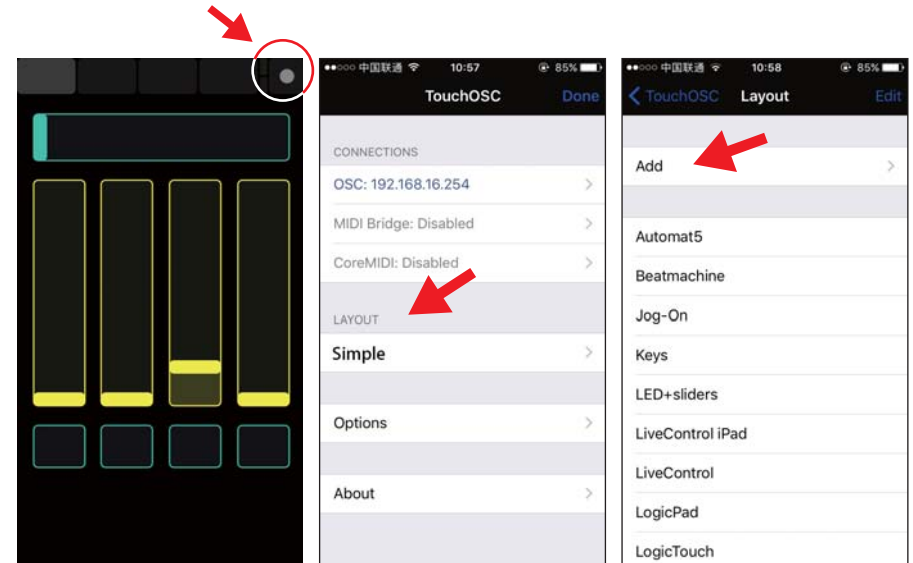
MENU OPERATION

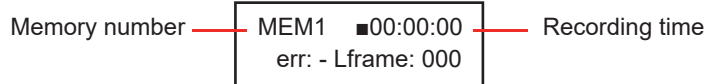


4. Run TouchOSCEditor on your PC/Laptop, click "Open" and select "RECORDER1024.touchosc" file from SD card.



5. Click on the dot in the upper right corner of your Phone/Pad, and then click LAYOUT and Add.





“err:-” means no error. when there is error during recording, then error code displays err: x (x=code).

5. When recording is over time, press ► button to start recording, ■ ■ to pause and ◀ to end recording. When it is step-by-step, press ► button to increase a step, ◀ to end recording.

REPLAY

Replay can be in solo or loop mode. And replay can be operated on the unit or iPhone/iPad via TouchOSC.

Replay on unit

1. Press REPLAY button and its LED is lit up. The unit goes to last status of replay.
2. Use ◀ and ► button to run in loop mode, ■ ■ button to run in solo mode.
3. In loop mode, LED indicator of ◀(or ►) is blinking. ◀ and ► button indicate the direction of running. The LED indicators of selected memory are lit up and the blinking one is in running.
4. When in loop mode, press ■ ■ button to pause, press ■ ■ button again to enter solo mode and its LED is blinking. In solo mode, the selected MEM (memorie) are lit up. Press the selected one to run in solo mode and its LED is blinking.
5. Use SPEED knob to adjust running speed from 25% to 200%. Use DIMMER knob to adjust output from 0 to 100%.

NOTE: MEM button without recording data can't be selected in REPLAY.

Replay on a iPhone/iPad

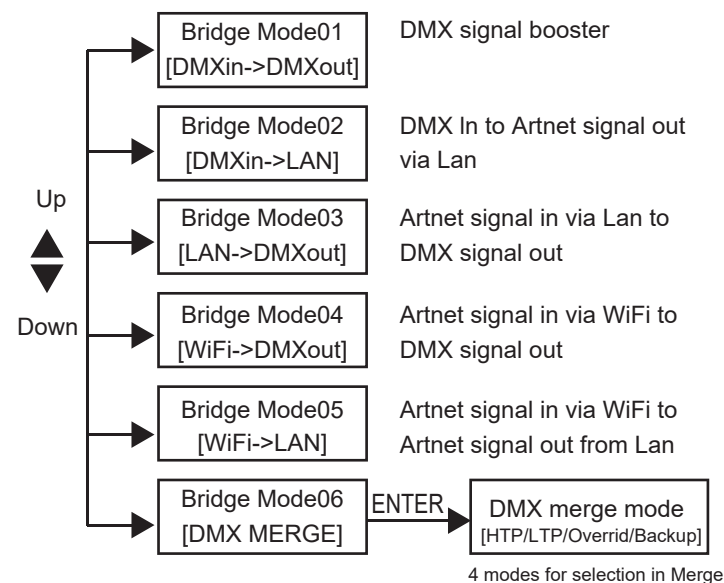
In order to use a iPhone or iPad to control the RECORDER, you need to install TouchOSC and upload the interface of RECORDER on your iPhone/iPad.

1. Download TouchOSC from Apple Stores/Google Play and install it on your Phone/Pad.
2. Click on TouchOSC and run it on your Phone/Pad.
3. Install TouchOSCEditor.exe on your PC/Laptop from the SD card included in Recorder (or download it from <https://hexler.net/software/touchosc>).

OPERATING INSTRUCTIONS

BRIDGE

Under BRIDGE, the unit works as a signal booster, ArtNet to DMX converter, DMX Merger. Press BRIDGE button and its LED is lit up. Then use MENU/ENTER/UP/DOWN to select different modes as below.



Bridge Mode03 [LAN->DMXout]

In this mode, the unit converts ArtNet signal via Ethernet connector (Lan) to DMX signal.



OPERATING INSTRUCTIONS

Bridge Mode04 [WiFi->DMXout]

In this mode, the unit converts ArtNet signal via WiFi to DMX signal.



Notes: 1). connect your lighting console to the Recorder's WiFi hotspot (password: 12345678). 2). Set IP address of your lighting console in the same network range as Recorder's WiFi IP address (2.0.0.x). 3). ArtNet output from your console must be enabled.

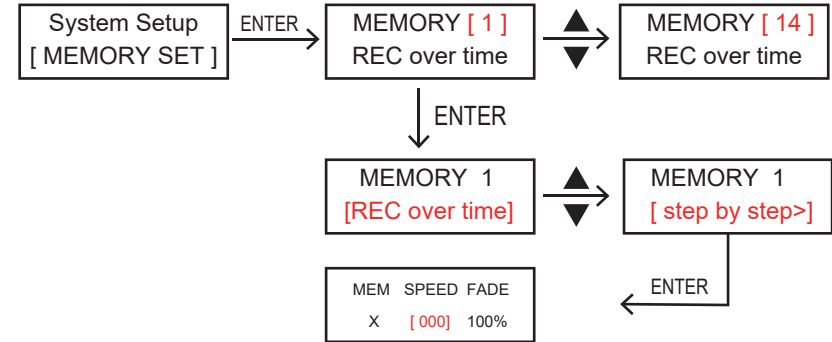
Bridge Mode06 [DMX MERGE]

In Merger mode, there are 4 modes for selection: HTP (the highest DMX value takes precedence), LTP (the latest DMX value takes precedence), Override (both inputs are combined to form an output signal by setting a start address for each input), and Backup (when the signal at input 1 is lost, the signal of input 2 will take output priority).

RECORD

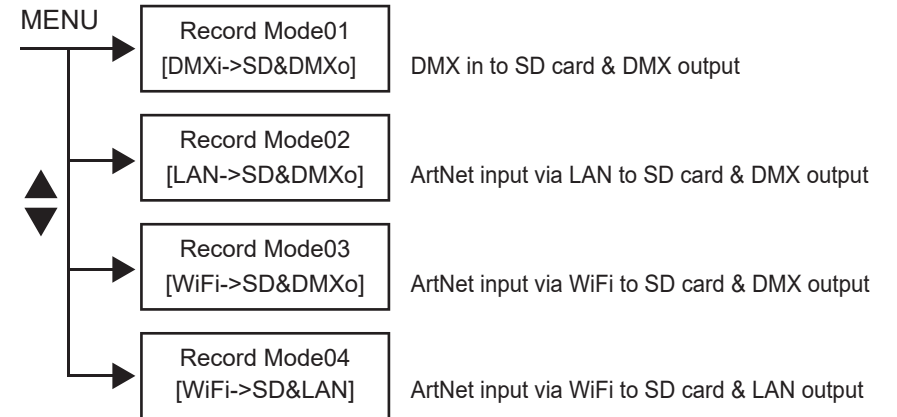
Lighting show can be recorded from DMX or ArtNet (via Ethernet or WiFi). There are 14 memories for recording and each can be stored up to 20 hours on the SD card.

1. Recording can be made as real time (Rec over time) or step-by-step. So, we need to set Memory mode before recording.



Notes: Speed can be set from 000-240 (0.1s-6s).

2. Press RECORD button and its LED is lit up.
3. Use UP/DOWN to select record modes as below.



4. Press MEM1-MEM14 button to select desired Memory for recording. The LED of selected Memory is blinking and corresponding number "MEMX(1-14)" will be showed on LCD.