



## Rugged Road Ready Features

- \* Beefy, Stackable Ball Corners
- \* Double Anchor Industrial Rivets
- \* Recessed, Industrial Grade Latches
- \* Recessed, Spring Loaded Handles
- \* Industrial Grade Rubber Feet
- \* Premium 3/8" Vinyl Laminated Plywood
- \* Tongue and Groove Locking Fit
- \* Heavy Duty Rack Rails
- \* Mounting Hardware Included
- \* Rear Access door
- \* ATA 300 Rating
- \* Road Ready Limited Lifetime Warranty

## Product Dimensions

Shipping Dimensions ( inch): 22 x 26.5 x 11.4

Shipping Weight ( lbs): 36.3

Product Dimensions (inch): 21.7 x 23.6 x 10.7

Product Weight (lbs): 35.2

Shipping Dimensions( cm):56 x 67.5 x 29

Shipping Weight ( kg): 16.5

Product Dimensions (cm): 54.5 x 66 x 27

Product Weight (kg):16

# RRM19R

Universal 19" Mixer Case w/ Rack  
Rails (fits 19" rackmountable  
mixers)



Created for the Pro's, the RRM19R mixer case is made for the journey and built to hold strong in high stress situations. Designed to fit rack-mountable 19" mixers including the Mackie 1604,1642 and the Allen and Heath Mix Wizard the RRM19R features heavy-duty rack rails to bolt down your gear and a removable, latchable cover. We also created the RRM19R with a rear access door for easy connections. Tougher than the pavement! That's the idea

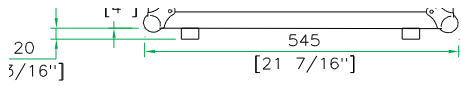
## Road Ready Cases

1226 Corral Place \* Santa Fe Springs, CA 90670

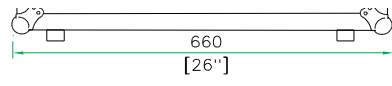
ph: 562.906.6185 \* fax: 562.906.6186

**WWW.ROADREADYCASES.COM**

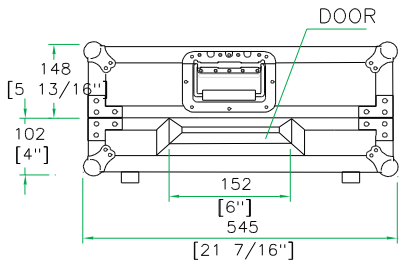
# RRM19R



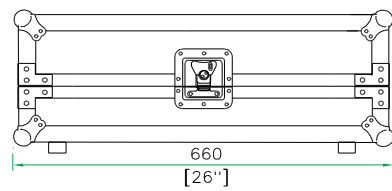
FRONT VIEW



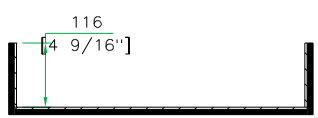
LEFT VIEW



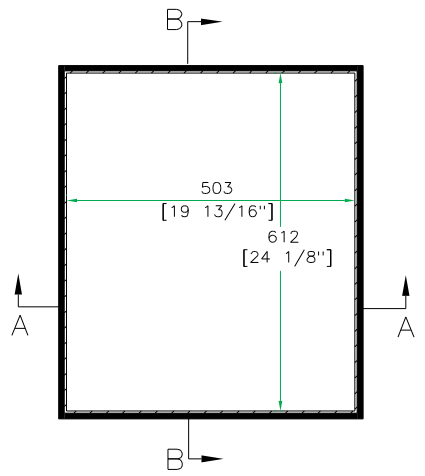
BACK VIEW



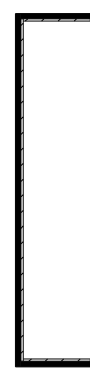
RIGHT VIEW



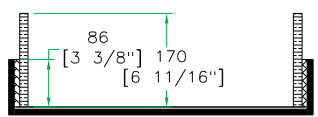
A-A VIEW



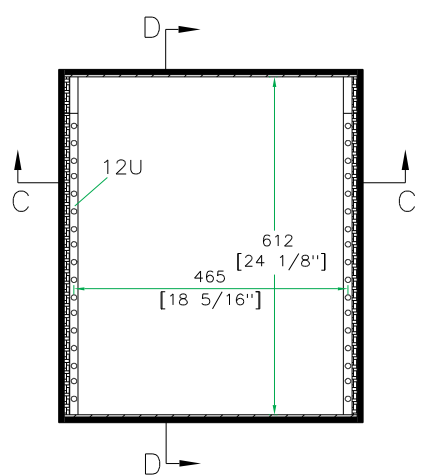
TOP VIEW OF COVER



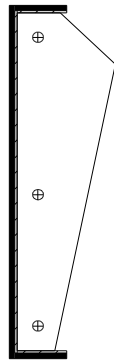
B-B VIEW



C-C VIEW



TOP VIEW OF BASE



D-D VIEW